

Historic, Archive Document

Do not assume content reflects current scientific knowledge, policies, or practices.

02.53

Lang Floral & Nursery Co.

1214 MAIN STREET, DALLAS, TEXAS

*Everything to Make the Home Beautiful
Everything for the House, Yard and Garden*

Over 30 Years of Satisfying Service



ABELIA GRANDIFLORA

One of the finest evergreens ever introduced in the South. Fine plants, 25c, 50c and 75c each.



A beautiful golden tinted, compact growing, arbor vitae. No finer plant for any yard. Small pot plants, 25c; large field plants, \$2.50, \$3.50 and \$5.00 each.



The planting of a few evergreens enhances the beauty of your home many fold



SPIREA VANHOUTTE

A very hardy and beautiful shrub admired by everyone. Early in spring it is a shower of beautiful white flowers. Small plants, 25c; larger plants, 50c.



SPIREA ANTHONY WATERER (Red)

A handsome everblooming, low growing, red flowering shrub. Nice plants, 35c each; larger plants, 50c and 75c each.

THE SPIREAS ARE FINE HEDGE PLANTS AND VERY DESIRABLE TO PLANT AMONG EVERGREENS. TWO SPECIALTIES OF MERIT — VERY ORNAMENTAL



PAUL'S SCARLET CLIMBER

Flowers are from 2 to 3 inches across and borne in clusters. 75c each.



CLEMATIS JACKMANNI (Large Flowering)

Violet-purple, intensely colored, giant blooms—the grandest of all Clematis. Each, \$1.00.

A Brief Message to Our Customers

We thank you for your business of the past. Some of you have been with us for thirty-three years, and there is a reason for our long and successful business career.

We have over 100 acres in Nurseries where we grow more than a million and a half of flowering shrubs, roses, trees, vines, berries, and in fact everything needed to make a home pleasant, profitable and home-like.

We have eighty-seven Greenhouses, 375,000 square feet of glass, to grow an additional million and more plants, bulbs and flowers for the home and yard.

Six stores to serve our many thousands of customers, where we carry everything in the seed line, poultry and pet stock, gold fish, canary birds, remedies for pet stock and spray material against insects on your plants, trees, shrubs and flowers. Store where we display the finest cut flowers used for gifts, birthdays, weddings, sick-room and floral work for funerals.

No better plants, shrubs, trees, roses and evergreens than the stock grown by us can be found. We can not guarantee any plants to live and grow, as anything that has life can die. Therefore, if any complaint regarding condition of plants, etc., then same must be made upon receipt of goods for immediate adjustment.

When in doubt or cannot find it listed write us; we will deem it a pleasure to help you.

Respectfully yours,

LANG FLORAL AND NURSERY COMPANY.

Information for Planters

Preparation of the Soil: The soil for all fruit, shade trees, roses, vines, hedges and evergreens should be prepared as carefully as that required for a crop of wheat, corn or potatoes. The land should be sufficiently drained to relieve the roots from standing in water and should be a deep bed of rich, mellow soil.

Preparation of Trees or Other Stock in Shipping: Great care is used in digging and packing our shrubbery with the result that only a few of the smaller roots are lost. If any of the roots are broken they should be pruned. Cut back the tops to the extent of about one-half the previous season's growth, taking care to prune in such a manner as will develop a well formed head, to admit air and light freely. Evergreens, the beauty of which depends on their natural form, should be pruned very little. Great pains should be taken in planting and caring for stock. If not ready to plant when the stock arrives, "heel it in" by placing the roots in a trench and covering them with mellow earth, well packed. Water frequently.

Planting: Make the holes large enough to admit the roots without any cramping or bending, and deep enough to set the tree to its proper depth. The fine surface soil should be used in covering the roots, and this should be carefully worked among them. Pour in some water when the hole is partially filled. See that the ground is firmly and solidly packed over all parts of the roots by exerting the full weight of the planter upon it, so that there will be no opportunity in planting nursery stock. Fill holes full enough to be even with the surrounding surface after the earth settles. Remove the label. If left on, the wire often cuts into and destroys the tree or branch. When planting dwarf trees, set them low enough to cover the stock upon which they are budded three or four inches.

Watering: All newly planted nursery stock is greatly benefited by frequent watering. Roses, Shrubs, Evergreens, Ornamental Trees, Perennials, Bulbs, etc., are exceptionally susceptible to an abundance of water. Best applied in the evening.

Pruning: Roses, Privet Hedge, Shrubs, must be severely pruned back. The roots of all stock are given a better opportunity to make a quick start if proper pruning is practiced. Early blooming and beauty of form and foliage will result.

The Space Required for different trees varies with the quality of the soil but an estimate is given below. In deep, rich soil, trees and plants would have greater space than in a thinner one. Apple trees should be planted from 30 to 40 feet apart. Peach and Pear trees should be planted from 20 to 30 feet apart. Plum and Apricot trees should be planted from 15 to 20 feet apart. Grape vines and Fig trees should be planted from 8 to 10 feet apart. Berries should be planted from 6 to 8 feet apart.

NUMBER OF TREES PER ACRE

At 30 feet apart.....	48 trees	At 10 feet apart.....	435 trees
At 25 feet apart.....	69 trees	At 8 feet apart.....	680 trees
At 20 feet apart.....	108 trees	At 6 feet apart.....	1200 trees
At 15 feet apart.....	193 trees	At 4 feet apart.....	2722 trees

Our Terms are cash with order. Digging and shipping begins November 15th, and continues until April 1st. Our catalog prices are the lowest we can make and are for stock at yard in Dallas or packed and delivered at express, freight or postoffice.

Shipping: All fruit and Shade Trees, Roses, Shrubs, Evergreens and Hardy Vines, Heavy and Hardy Bulbs and Roots should be sent by express. Better and moister packages can be sent. Small plants can be sent by mail if so desired, but we strongly advise our customers to have their plants sent by express at their expense, as larger and finer plants can be sent in this way.

Remittance may be made at our risk by bank drafts, postoffice money order, express order or registered letter. Small amounts may be sent by ordinary mail, and postage stamps can always be used to advantage (one and two-cent denominations preferred).

Write for Booklet on Planting and Pruning of Shrubs and Trees*



One of our 6 stores and many greenhouses where over 100 men and women are employed to arrange flowers to grow and cultivate, to receive and fill your orders. The House of Lang's is known in all parts of the U. S. A., the mercantile agencies and banks will vouch and O. K. your orders. We will appreciate any order from you and will do our best to fill beyond your expectations.

Respectfully,

LANG FLORAL AND
NURSERY CO.

BULBS IN OUR SOUTHLAND BULBS SHOULD BE PLANTED IN DECEMBER AND JANUARY AS THERE ARE NO BULBS TO BE HAD AFTER JANUARY.

Bulbs for Fall and Winter Planting

Darwin Tulips—We have the best varieties adapted to this part of the country and specialize in the varieties with the largest flowers, best and strongest stems, the clearest and most popular colors, which we grow in countless thousands of the following:

Baronne De La Tonnaye—Deep rosy-carmine.

Clara Butt—Delicate salmon-rose.

Faircombe Sanders—Very large fine red.

Pride of Haarlem—Brilliant rosy-carmine.

Rev. Eubank—Lavender-violet.

Inglescombe Yellow—Best yellow.

Many other varieties; all largest bulbs and first grade, **10c each; \$1.00 per dozen; \$6.50 per hundred.**

Hyacinths—Our exceptionally choice Hyacinths have always given satisfaction.

Dutch Hyacinths—This beautiful and flowering bulb comes in the following colors: Red, pink, white, yellow, light blue, dark blue. Can be planted in boxes or pots for the home for window blooming or planted in the yard in November, December and January; these bulbs will bloom early in the spring or when soil becomes warm. Fine large bulbs, single or double flowers. **15c each; \$1.75 per dozen.**

Miniature Dutch Hyacinths—While on the order of the Dutch Hyacinth, are of a smaller size with single flowers and come in pink, white and purple. These bulbs are best for yard planting. By planting early and getting a good root system they give excellent flowers. **10c each; \$1.00 per dozen.**



Dutch Hyacinths



Darwin Tulip

Narcissus—There are no hardy bulbous plants which have more points of merit than the Narcissus.

Trumpet Narcissus Emperor—One of the finest Daffodils in cultivation; entire flowers of the richest yellow, trumpet of immense size and the petals of the perianth are so broad they overlap and measure $3\frac{1}{2}$ inches across. **15c each; \$1.75 per dozen.**

Paper White Narcissus—The Narcissus is grown in soil or in water and pebbles. The flowers are borne in clusters on long stems; very fragrant; first flowering bulb to come in bloom. Can be had for Christmas, and by planting a small lot every two to four weeks until March, flowers can be had all winter and spring in the house at a small expense. Large bulbs, **10c each; \$1.00 per dozen; \$10.00 per hundred.**

Yellow Narcissus—A very early flowering Narcissus, same as Paper White Narcissus, but more fragrant and does well planted in soil or in a bowl of water and pebbles. Large bulbs, **20c each; \$2.00 per dozen.**

Calla Lilies—This Lily is strictly a house plant, the foliage making a decorative plant and as this plant blooms three to five times during the winter it is doubly valuable to the lover of plants and flowers. Large bulbs, **50c**; medium size, **35c**; small size, **20c each.**

Yellow Calla Lilies—Beautiful dark-green foliage, some smaller than the Calla Lily with bright yellow spots all over the foliage and a beautiful golden flower. Try at least one for your room. **Price 50c each.**

Easter Lilies—What prettier or purer flower than this beautiful Lily could you find? Large bulbs, **35c each; \$4.00 per dozen.**

Freesia—The bulb that everybody wants to grow. There are more flowers on this small bulb than any similar bulb of its size. Flowers creamy white and very fragrant. **5c each; 50c per dozen.**

Oxalis—Large Buttercup—This is the large yellow Oxalis used for pot plants, hanging baskets and boxes. **5c each; 50c per dozen.**
Oxalis, Mixed—Red, white and lavender. **4c each; 35c per dozen.**

Hardy Bulbs for Outdoor Planting

Amaryllis Johnsonii—The only red Lily grown that is any good; fine bulbs of these at **50c each.**

Crinum—Fimbriatum—Also called Angel Lily and Milk and Wine Lily. In this the flower is a pure white with a streak of pink down the center of each petal. It is delightfully fragrant and blooms all summer. Large bulbs, **35c each.**

Dahlias—One of the best summer and autumn flowering plants, and now enjoying a wide popularity. Small roots, **25c each**; medium roots, **35c each**; your choice of the following named varieties:

Chas. Lanier—Rich dark red; large.

Berle Von Holland—Silvery pink.

Mina Burgle—Rich luminous dark scarlet.

Yellow Duke—Large soft yellow.

Ad Livonia—Large white.

Peonies—Magnificent hardy plants, almost rivaling the rose in perfume, brilliancy of color and perfection of bloom. They are perfectly hardy. Require little or no care, and produce larger and finer blooms when well established. We offer double white, rose and crimson. Price, **50c each.** Plant from December 1st to March 1st.

Iris—The Iris or Flag is of easy cultivation. They like the sun and thrive best in a rich loam with plenty of moisture.

German (or often called Flags)—Beautiful large flowers, white, yellow and purple. **25c each; \$2.50 per dozen.**

Japanese Iris—Fancy designs. A rival to an orchid. All colors imaginable. Fine bulbs, **35c.**

Lilium Tigrinum—(Tiger Lily)—Of stately habit, growing from four to six feet high, bearing an immense number of double, bright orange-red flowers spotted with black. **30c each; three for 85c.**



Fancy-leaved Caladiums

Caladiums—Esculentum

A tropical plant with luxuriant green foliage. The leaves are often more than two feet across and are bright and ornamental the entire season. Will grow in any ordinary garden soil, but should have plenty of water in order to give best results. 15c, 25c; large bulbs, 35c and 50c each.

Caladiums (Fancy Leaved Caladiums)—Plant in April and May. \$1.00 and \$1.50 each.



Mexican Tuberose

Tuberose, Mexican blooms the whole summer and is very fragrant; get at least a few for trial. 10c each; \$1.00 per dozen. Plant from November 15th to April 1st.

Gladioli—This beautiful flower has come to the front to stay; it is not only used in yards by the thousands, but it is grown by florists in greenhouses by the millions and the demand for the beautiful flowers is increasing with every year. Finest mixed, 7c each; 75c per dozen. \$4.50 per hundred.

Following named varieties, strictly No. 1 bulbs; 10c each; \$1.00 per dozen.

America—A beautiful lavender-pink. The flowers are of largest size and are borne on strong spikes.

Hally—This is one of the earliest of all Gladioli to come into bloom. The color is a delicate rose with a white blotch.

Mrs. Francis King—Large blooms of a pleasing light scarlet. It is a strong grower and blooms profusely.

Mrs. Frank Pendleton, Jr.—Large, well-expanded flowers of a lovely salmon-pink, having blood-red blotches in the throat.

Schwaben—Flowers of a delicate pale yellow with a dark blotch in the center. It is a magnificent grower.

Chicago White—Lavender markings in throat. Highly recommended.



Gladiolus

Cannas—The most desirable bedding plant for the American garden. Give rich soil and abundance of water when the plants are in full bloom. Fine roots ready December 1st to May 1st. If wanted by mail add 15c per dozen.

Rosea Gigantea—Extra large flowers, borne in such abundance that the mass of color on each plant is truly amazing; a deep rich rose. 4 to 5 feet. 20c each; \$2.00 per dozen.

Mrs. Alfred F. Conrad—4 feet. Exquisite salmon-pink flowers of the largest size, produced in fine, erect spikes well above the green foliage. 20c each; \$2.00 per dozen.

Eureka—The best white for all purposes to which Cannas are devoted. It is of robust constitution, growing four feet high, forming sturdy, shapely plants very quickly. A creamy white, changing in full sun to a pure white. 35c each; \$3.50 per dozen.

City of Portland—A wonderful bright rosy-pink; a free-flowering, vigorous grower. 25c each; \$2.50 per dozen.

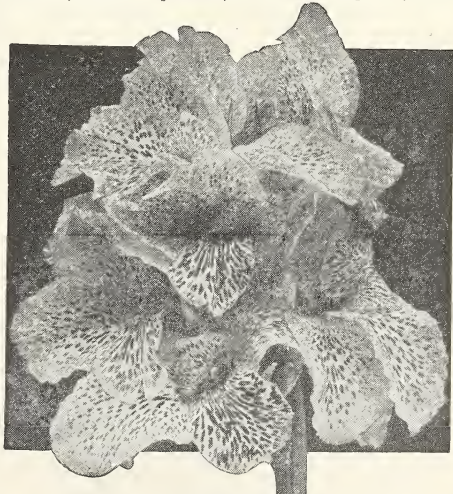
Golden Eagle—A wonderful clear golden-yellow of free, upright growth. The flowers are produced in large clusters well above the foliage. Four feet. 35c each; \$3.50 per dozen.

Mrs. Antoine Wintzer

Mrs. Antoine Wintzer—Color a pure, warm, unshaded yellow throughout. The flowers are very firm, large, and set loosely on the stem, graceful and charming every way. This is, without question, the loveliest pure yellow Canna yet introduced. 20c each; \$2.00 per doz.

The King of all Cannas—King Humbert—Four to five feet. (New Italian Orchid - Flowering). Bronze foliage. In this grand Canna we have a combination of the highest type of flower with the finest bronze foliage. Its flowers are of a brilliant orange scarlet, with bright red markings. It is without doubt unsurpassed in the Canna family. 15c each; \$1.50 per dozen.

The President—The greatest red Canna, possessing every desirable quality. Of immense size, unsurpassed in vigor, penetrating color, a free bloomer. Four feet. 20c each; \$2.00 per dozen.



Florence Vaughan

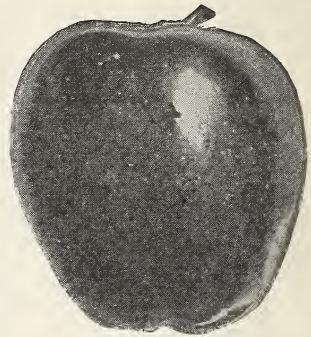
Fruit Department

Apples—We carry a limited quantity of Apples in the very best varieties, select stock. If you live where Apples thrive we can please you with our stock and prices. Winesap, Jonathan, Grimes Golden, Red June, Ben Davis, Delicious, Early Harvest. Extra size, 6 to 8 ft. \$1.00; 4 to 6 ft. 75c; 3 to 4 ft., 50c.

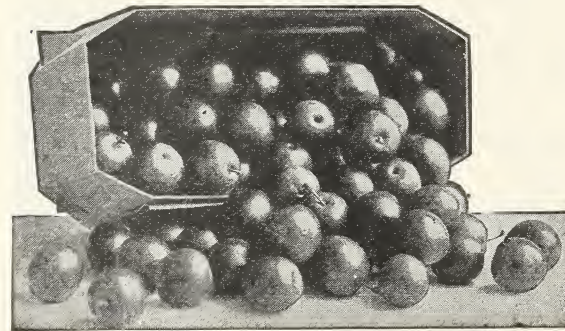
Apricots—The varieties here listed have proven hardy and prolific bearers. The trees should be handled as the peach, and are profitable both as a market fruit and for home consumption. In planting an orchard do not overlook planting a few Apricots. Apricots ripe through June and July. Prices, 3 ft. 75c; 5 to 7 ft. \$1.00.

Cluster—This valuable variety is claimed to have never missed bearing a season since its introduction. Originated in Texas from seed of Russian Apricot.

Early May—Yellow, freestone, rich, juicy; of Russian strain. Very early, often ripening the last of May.



Delicious Apple



Compass Cherries

Peaches

Peaches are among the most desirable fruits, and the peaches of Texas are famous. Many new, rare and prolific varieties are discovered every year. All classes and varieties are adapted to most parts of Texas. Early varieties ripen in May and June, while others ripen continuously until October.

If you are not familiar with varieties, tell us what you want, cling or freestone, early, mid-season or late, and let us select them for you.

Prices

	Each	Dozen
Extra large, 2-year, 6 to 8 ft., select	\$1.00	\$10.00
First grade, 5 to 6 ft., strong.....	.50	5.00
3 to 4 ft., good.....	.35	3.50

Belle of Georgia—Large, showy, clear cream-tinted; freestone. July 1st to 15th.

Carmen Peach—Nationally known variety, white flesh, very sure and prolific; in appearance like Mamie Ross; ripening middle to latter part of June. Free.

Chinese Cling—Very large, red cheek, white flesh, juicy. Ripe July 25th.

Early Wheeler—The largest and most attractive of the early varieties. Strong grower. Fruit white with red blush. A good shipper and fine commercial variety. Ripens in early June. Cling.

Elberta—Very large, rich yellow with red cheeks; meat yellow; good shipper; splendid for preserving; freestone. July.

Governor Hogg—A large white clingstone; Texas introduction. A very valuable peach for family use. Ripe July 20th to 25th.

Indian Blood—It is the large, blood red, juicy clingstone peach we used to know when we were boys. Everybody that ever knew it wants a few trees, and so we are glad to be able to offer such a general favorite once more.

Cherries—Only a few varieties of Cherries have been found valuable in the South. These trees appear to do best in dry yards, or other uncultivated grounds.

Early Richmond—Early, dark red, sub-acid; most prolific and hardy of all varieties tested here. \$1.00 each.

New Century—This new Cherry seems to be a cross between Morella and the sweet type of Cherries; early, large, light reds with good flavor. It is a strong grower, with healthy, vigorous foliage, and for a number of years has borne better in Grayson County, Texas, where it originated than any other variety. \$1.00 each.

Compass Cherry—A cross between a plum and a cherry, very productive. The most popular fruit of its kind today wherever known. Do not fail to plant at least one. You will never regret. 75c and \$1.00.

Crab Apples—4 to 5 feet. Each \$1.00; doz. \$10.00
3 to 4 feet. Each 75c; doz. 7.50

Transcendent Crab—Tree strong grower, making a large and beautiful tree. An early and abundant bearer. Perhaps the most valuable of this class. Fruit large, round, yellow, shaded with red. Valuable for preserving and cooking and said to be one of the best for cider. September.

Red Siberian—One of the largest crab apples. Grows in clusters; yellow with dark scarlet cheek. Bears young and abundantly. September.



Elberta

Mayflower

Early Wheeler

Late Elberta—A fine peach of Elberta type; perhaps a month later.

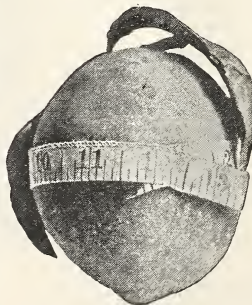
Mamie Ross—Large, white, almost covered with carmine; flesh white, juicy and of good quality. One of the best for family use and probably the best early commercial variety; semi-cling. Ripe in June.

Mayflower (Semi-Cling)—The earliest, about June 20th, red all over, firm, of good size and shape, good quality for an early peach; hardy; productive, bears young.

Old Mixon Cling—Large, round, red cheek, sweet, firm; valuable. Ripe July 20th.

Stinson's October—Medium, white with red cheek, and of excellent flavor. A profitable Peach for late market. Cling.

Those contemplating planting commercial orchards are invited to write us giving a list of their requirements.



Late Elberta

Pears—Our Pears are grown on Imported French stock. Our trees are healthy and free from disease.

This fruit is growing in popularity since many new, hardy and prolific varieties are being introduced. In habit of growth and requirements the pear is similar to the apple. The trees require a rich soil, underlaid with deep, moist clay. The fruit should be gathered before it is fully ripe and stored in a cool, dark place to ripen properly.

First grade, 2-year, 6 to 7 feet.....	Each	Dozen
5 to 6 feet.....	\$1.00	\$10.00
3 to 4 feet.....	.75	7.50
	.50	5.00

Garber (Oriental Hybrid)—Large, of good quality; very vigorous, hardy and prolific; is growing very popular.

Kieffer—Large, yellow, red cheek, oval; flesh white and juicy; valuable for preserves; also for eating when ripening in boxes; tree large, productive and hardy. Most valuable of all Pears for Southwest.

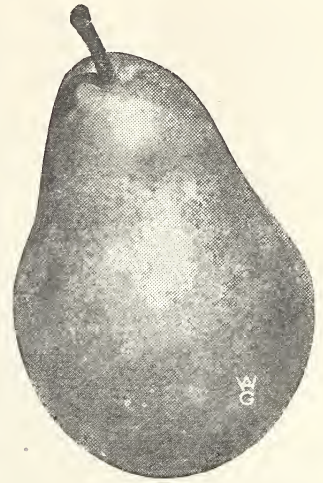
Seckel—Tree a moderate grower and less subject to blight than most varieties. Fruit small, rich, yellowish-brown and red; rich, fine flavored. August.

Plums—This is the most universal, most easily grown and most useful of all our fruits. The trees are hardy, vigorous and prolific. Some of the late blooming varieties never fail to bear in a location adapted to their growth.

Season of Ripening—Varieties in the following list will supply best fruit in about the order named. This list will extend from May to September.

First grade, 2-year, 5 to 6 feet.....	Each	Dozen
First grade, 2-year, 4 to 5 feet.....	\$1.00	\$10.00
Smaller size, 35c and 50c.....	.75	7.50

America—Tree very thrifty and symmetrical. Fruit medium to large, yellow with pink cheek. Considered one of Burbank's best productions. A good bearer. July.



Seckel Pear



Magnolia Fig

Burbank (Japan)—Large, round, dull red; has firm, sweet, yellow flesh; ripe in July. A reclining grower; hardy and very prolific. One of the most popular of commercial plums.

Golden Beauty—Of medium size, yellow, acid; hardy, very productive. Late.

Gonzales—Said to be a cross between a native plum and a Japan plum. Large, bright red, of delicious flavor; vigorous, hardy, productive.

Shiro—A very desirable large to very large, clear, yellow plum, oblong and of unsurpassed quality, ripening latter part of June.

Six Weeks—One of the best productive plums grown; ripens very early, of fine flavor, red in color; good to eat fresh and fine for cooking or preserving; best all-around plum for the South.

Wickson (Japan)—Very large, oblong-pointed, yellow, changing to brownish-red; an upright grower; bears young; very valuable. July.

Wild Goose—Large, red, oblong; good Chickasaw; ripe in June.

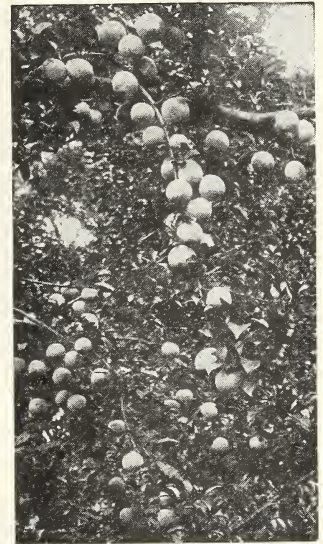
Figs—A few hardy varieties of the Fig are planted to profit here.

Prices, Fig trees:	Each	Dozen
2 to 3 feet.....	\$.50	\$5.00

Brown Turkey—Oblong; dark brown with blue bloom, red flesh; delicious; prolific.

Celestial—Hardy farther north than most other varieties. Fruit small, of a pale violet color, fine flavored, early ripening, about June, and continuing for several months.

Magnolia—Most popular Fig in the coast country.



America Plums

Persimmons—This royal fruit from Japan is deservedly popular, most beautiful in foliage and the most delicious of all fruit. It gains in the estimation of people everywhere when they learn its value. We offer best obtainable varieties, grafted on native stocks, as follows:

3 to 4 feet.....	Each	Dozen
4 to 5 feet.....	\$1.00	\$10.00
	1.50	15.00

Kuro Kume—Large, round, dark red skin and flesh; delicious when packed away to ripen; productive. Ripe in October.

Hakume—Large, round, yellow, flesh red, good keeper; fine when soft.

Grapes—(Standard Varieties)—We are able to give our customers from our rich limestone soil a root system that is bound to please. Prices, except where noted:

No. 1, strong 2-year plants.....	Each	Dozen
No. 1, light grade, but good.....	\$.50	\$5.00
	.35	

Carmen—Medium size, black, vigorous grower, very productive, free from mildew and leaf worm. One of the most satisfactory and popular sorts. August.

Catawba—Red; table and wine.

Concord—Large; blue-black; standard commercial sort. North.

Delaware—Small, red, tender, very sweet and delicious; hardy and productive.

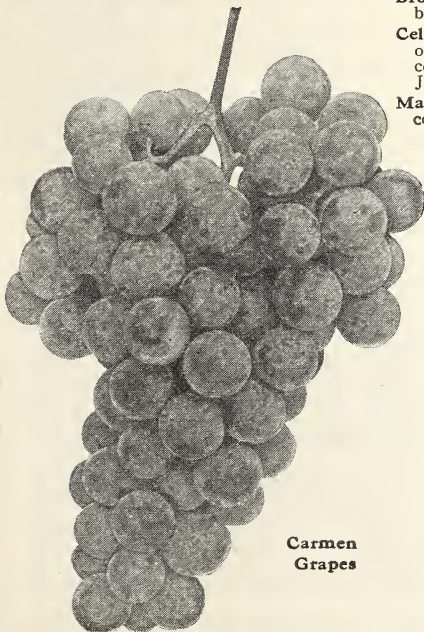
Herbmont—Berry small, dark blue, tender; bunch large; vigorous, hardy, productive, extensive and deservedly popular; makes good vines; late, fine arbor grape.

Moore's Early—Large, black with blue bloom; valuable for earliness.

Moore's Diamond—Finest white. A fine arbor grape.

R. W. Munson—Black, vigorous grower, medium to large clusters, skin never cracks; juicy and tender. Fine quality. July.

Niagara—A fine large white-green grape; good bearer and fine table grape.



Carmen Grapes

Blackberries and Dewberries—The blackberry, like the grape and plum, is native to the soil and will grow anywhere. It is one of the most reliable, wholesome and valuable of all fruits. By planting early and late varieties, a continuous supply can be enjoyed six or eight weeks each season. You will notice we do not quote berries in lots of less than twenty-five plants in a variety. They are tied in bunches of twenty-five in the fields and cannot be broken. Any purchaser needs as many as twenty-five of a variety.

Austin, Dallas, McDonald. Per 25 \$2.00; per 100 \$5.00.



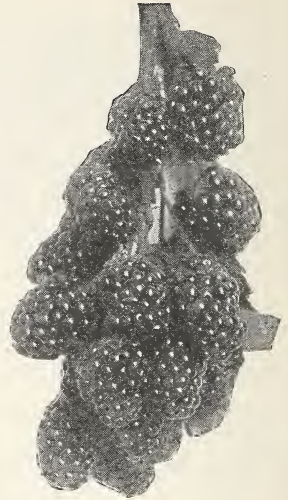
Dewberries

Austin Dewberry—Very large, sub-acid; hardy, vigorous, very productive. Plant is an erect, strong grower, rather than a trailer.

Dallas—Large, round, of good quality; vigorous, hardy, prolific, extensive. Has proved to be one of the most satisfactory varieties to grow. Native of Dallas, Texas.

McDonald—Large, tender, juicy, of best quality. Earliest, hardiest, most vigorous and most productive of all berries here. This is a new berry, a cross between the blackberry and dewberry. It is incomparably more productive than any berry fruited here. Should be planted with other blackberries, as they do not set a full crop of berries by themselves.

Himalaya Berry—It is an exceedingly strong grower and free bearer, especially when planted with McDonald or Dallas. Fruit is of medium size and fine flavored. Strong plants, 25c; \$2.50 per dozen.



Blackberries



Lady Thompson Strawberries

Strawberries—The Queen of all fruits. Probably there is no other crop that yields as much profit on a small area. The following varieties are worthy of general planting:

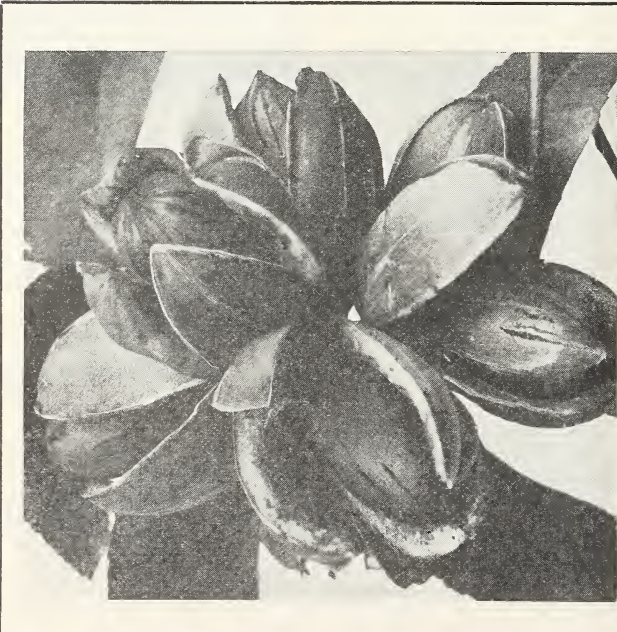
Dozen 100 1,000
Price of following: \$.35 \$2.00 \$15.00

Klondike—Large, early, best berry for the South and coast country.

Lady Thompson—Large, good color, uniform, hardy, valuable. Staminate.

Everbearing Strawberries

A wonderful berry with all the good qualities and the flavor of a strawberry, but everbearing where moisture is normal. Fine plants, 75c per dozen; \$5.00 per 100.



Pecans

Every yard or home should have one or more Pecan Trees. Grafted Pecan Trees give most reliably good results.

Wonderful progress is being made in the improvement or selection of Pecans. Fine qualities once secured are maintained with absolute certainty by grafting or budding from these fine trees on seedling stocks. Orchards thus selected and started are an unfailing source of greatest profit and gratification. We have a good stock of the following finest varieties: Stewart, Frotcher, Van Deman, Success. Prices of budded and grafted Pecans:

- 3 to 4 feet.....Each \$1.00
- 4 to 5 feet.....Each 1.50
- 5 to 6 feet.....Each 2.00
- 6 to 7 feet.....Each 3.00

Ornamental Department

Trees for Street, Park, Drive and Yard Planting

Shade Trees

Chinese Elm—

This block of Chinese Elm was planted from small 1-year stock three years ago. The trees are now 4 years old and have been admired by several hundred thousand people in this short time. The Chinese Elm is a new tree and has been tested in the dry, arid parts of West Texas, South Texas, Oklahoma, Colorado and other States, and found to stand the dry climate better than where it had plenty of water and cultivation. The tree will stand pruning to shape as you desire; the leaves are small, dark green, and stay on much longer than any trees in the fall. In order to put it in reach of all we are making the following low prices:



Chinese Elms are fast growing, long-lived trees

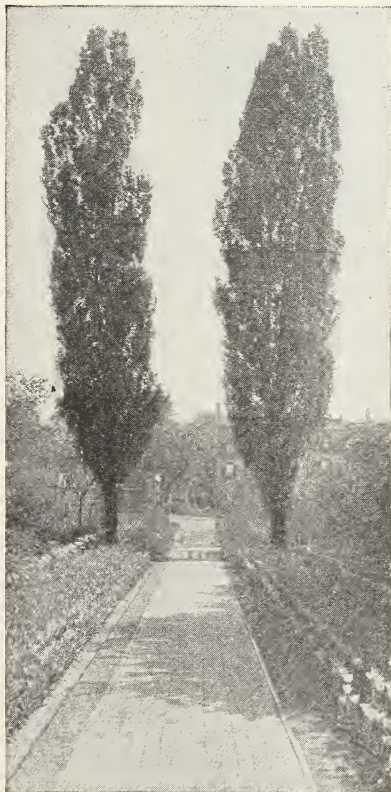
5- 6 feet.....	Each	75c
6- 7 feet.....	Each	\$1.00
7- 8 feet.....	Each	1.50
8-10 feet.....	Each	\$2.50-3.00
10-12 feet.....	Each	3.50-5.00
12-14 feet, heavy....	Each	5.00-7.50

Other Fine Shade Trees

American Elm—The Long Leaf American Elm is perhaps one of the largest growing, giving more spread than any other shade tree grown, outside of the few native trees in other parts of the country; it is of long life and easy culture. 8-10 feet \$1.50; 10-12 feet \$2.50.

Sycamore—Large, stately, symmetrical, hardy; long-lived; has beautiful white branches and large green leaves. One of the best shade trees everywhere. Our stock cannot be excelled. 8-10 feet \$1.50; 10-12 feet \$2.50.

Hackberry—The tree for the South; long life. 8-10 feet \$2.00; 10-12 feet \$3.50.



Lombardy Poplars

Ornamental Trees

Lombardy Poplar—

In the last few years the demand for this popular tree has been so heavy that we have grown many thousands of these beautiful Lombardy Poplars for ornamental purposes and are now offering them at the following low prices:

6 to 7 feet.....	Each \$.50	10 to 12 feet.....	Each	\$2.50
7 to 8 feet.....	Each	.75	12 to 14 feet, heavy..	Each	3.50
9 to 10 feet.....	Each	1.50			
Special, extra heavy and full, 16 feet.....	Each	\$5.00-\$7.50			

Other Fine Ornamental Trees

Chinese Umbrella Tree (Texas Umbrella)—A rapid grower with luxuriant deep-green foliage, forming a beautiful canopy top, enduring perfectly until severe frost. 6-foot trees only, \$1.25.

Willow (American Weeping)—A large, rapid grower, of graceful weeping habit, showing greatest beauty in moist location. 6 to 8 feet, \$2.00 each.

Catalpa Bungei—A beautiful umbrella-topped tree, very distinct and striking as well as hardy. Fine for driveways or specimen plants. We bud on a six to seven-foot stem. 2-year heads, \$3.00 each; \$30.00 per dozen.

Teas' Weeping Mulberry—A novel, attractive tree, the limbs naturally weeping to the ground. We graft to six and eight-foot stems. This gives a nice height for either single specimens or park rows. 2-year heads, \$3.00 each; large specimens, \$4.00 and \$5.00 each.

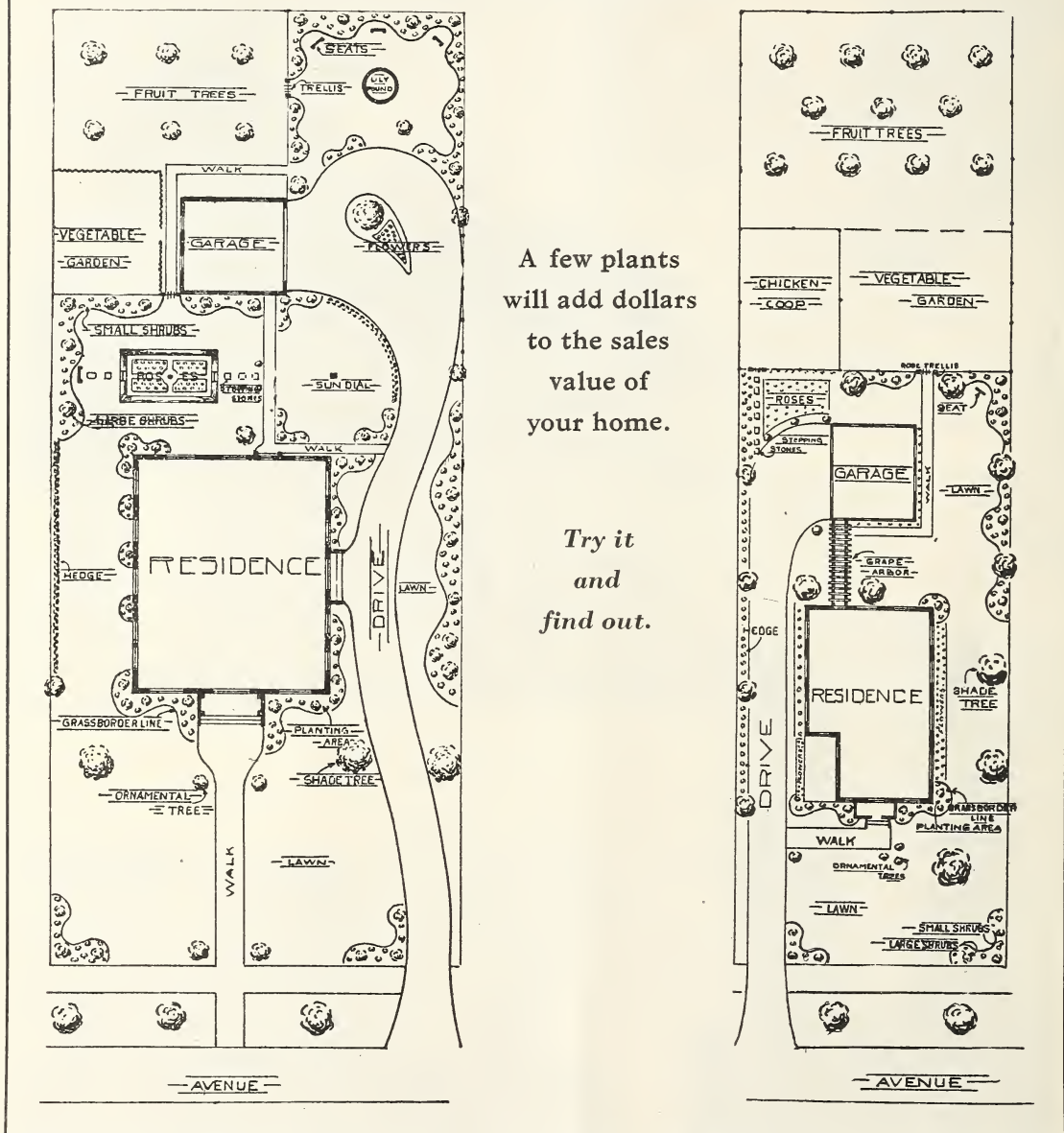
Mulberries—The Mulberry is a natural growth of the South. It is a beautiful shade tree and furnishes a pleasant fruit for many weeks. Pig and poultry raisers find it a profitable tree. We offer a choice selection of the best varieties.

Black English—Very prolific and earlier than the Hicks. 5 to 8 feet, \$1.00 each.

Hicks' Everbearing—Tree large, vigorous, hardy, very productive, bearing large quantities of fruit during eight or ten weeks \$1.00 each.

Landscape Service Department

Let us help you make your home more beautiful and increase the value of your house and lot.



These two drawings illustrate how you can beautify a lot or home with a few or many shrubs, using every foot of space for something useful and ornamental

A Pen-and-Ink Landscape Sketch—The above sketch is of a medium size lot and may assist you in planning your new home. This lot is about the average city lot, ranging from 50x150 to 75x150. We illustrate here to a slight extent what can be done on a lot of this size. Note the artistic drives, walks, garage, or servants' house, the orchard, old-fashioned garden, sunken or rose garden. Shrubs as found listed in this catalog can be used very profitably in beautifying your home.

Landscape Service—Our practical landscape service assures the correct grouping and arrangement of plants and shrubs that will grow and thrive in this climate. We will deem it a pleasure to have you call our landscape department and arrange for an interview at your convenience. For our out-of-town patrons who cannot visit Dallas we will assist them as far as possible if they will mail us a lay-out of their yard, giving measurement and size, location of buildings, walks, permanent trees, fixtures, etc. Where it is necessary to draw plans a nominal charge of \$5.00 is made, but is credited on purchase of nursery stock when same amounts to \$25.00 or over. The advice, however, of our landscape department is free and always at your service. A blue print, made after pencil sketch is accepted, will cost \$25.00 and will be credited on an order of \$150.00 or over. With this blue print is given a key to planting that anyone can follow and carry out.

Gold Medals

Highest Awards for Landscape Designing

THESE medals have been secured in competition with a number of the ablest landscape architects of America at one of the largest exhibitions of Landscape Art.

Our Landscape Architect, who received his diploma in Europe studying the English, French and Spanish types of Landscape Architecture, personally supervises the designing and planting of your home grounds.

A pledge to our friends that only the best adaptable flowers will be suggested which will bring out the greatest harmony in beauty.

We pride ourselves to be in a position to offer to the public a service in Landscape Gardening of inestimable value.

Read carefully on page 8 how to secure a plan of your home grounds free of charge.

Our immense productions of trees and flowers enable us to make such wonderful values.



Highest Award (Gold) and Award of Merit

Lang Floral & Nursery Company, by *Otto Lang*, PRESIDENT

The Lang facilities for doing any size planting.

Views



Digging, Balling and Grading a car of Fruit Trees and Ornamental Evergreens

No order too large and no order too small to receive our best care and attention. A trial will tell.



Another crew of men getting ready to load a car of Ornamental and Decorative Stock for a home in South Texas. Our stock comprises practically every known plant that thrives in our climate

Ornamental Evergreens and Hedge Plants

Note illustrations carefully; pictures taken at our own nurseries will give you a splendid idea of the general characteristics of Evergreens and Hedge Plants, their shape, foliage and effect when grouped with others. These pictures are suggestive of many group plantings.



Evergreens and Hedge Plants illustrated are: 1—Arizona Blue Cypress. 2—Dwarf or Low Dense Privet. 3—Chinese Arborvitae Compacta. 4—Rosedale Hybrid Arborvitae. 5—Goldspire Arborvitae. 6—Nandina Domestica (Chinese Bamboo). 7—Italian Cypress. 8—Baker's Pyramidal Arborvitae. 9—Mahonia Aquifolia.

Abelia Grandiflora—No. 16—A semi-dwarf evergreen shrub, with beautiful bright shining leaves which assume a metallic hue in fall and winter. Bears a profusion of flowers borne in clusters. Flowers small and trumpet-shaped, tinted outside a light lavender pink, with a waxy white within. Has a sweet fragrance and blooms from early summer until frost. Beautiful as a single plant or as a mass planting. It is the very finest blooming plant to border flower beds and cannot be surpassed as a hedge plant. Illustrated on back cover. Bushy plants, 35c, 50c, 75c, \$1.00 each. Specimen plants, bushy and large, balled in soil, \$1.50, \$2.00 and \$3.50 each. We cannot recommend this shrub too highly. It flowers all summer and foliage has such a beautiful color in the winter that makes it attractive.

American Arborvitae—This is the fastest growing and most ornamental evergreen grown; it is used best as a lawn decoration; can be trimmed in any shape; not compact in growth but the loose, graceful kind. 50c, \$1.00 and \$2.00.

Baker Pyramidal Arborvitae No. 8—Upright grower of columnar habit, foliage light green, very desirable for formal effects. Prices: Mail order size, 12-15 inch, \$1.00; 18 to 24-inch balled and burlapped, \$2.75; 30 to 36-inch balled and burlapped, \$3.50.

Berkman's Golden Dwarf Arborvitae—\$2.50 to \$10.00 each.

Bonita Arborvitae No. 11—A beautiful globe-shaped evergreen, slow growth; fine for urn planting; desirable in location where low growing evergreens are needed. Prices: Mail order size, 50c; 8 to 10 inches, \$1.50; 12 to 18 inches, \$2.00, \$3.00.

Chinese Arborvitae Compacta No. 3—A well known evergreen of nice pyramidal growth; fine for grouping and background effect. Price: 10 to 12 inches high, 50c each; 12 to 18 inches, 75c each; 18 to 24 inches, \$1.00 each; large plants, \$2.00 to \$5.00 each.

Chinese Golden Arborvitae—Illustrated on back cover. Small, erect; compact foliage; tinted with gold. \$1.50, \$2.50 and \$5.00 each.

Goldspire Arborvitae No. 5—Erect growth; foliage golden, suffused with green; very choice. Price: 12-18-inch balled and burlapped, \$3.00; 24-36-inch balled and burlapped, \$5.00; 36-48-inch balled and burlapped, \$6.00 to \$7.50.

Rosedale Hybrid Arborvitae No. 4—Bluish-gray feathery foliage of soft effect; fine to plant in urns; also good to use either in shrubs or evergreen planting. Price: 10 to 12 inches high, 50c each; 12 to 18 inches, 75c each; 18 to 24 inches, \$1.50 each; 24 to 30 inches, \$2.00 each.

Boxwood—Two-inch pots, 15c; 3-inch pots, 25c; 4-inch pots, 50c; 5-inch pots, 75c and \$1.00 each. Large field-grown plants, \$2.00 to \$10.00 each.

Cape Jasmine—One of the most popular Southern shrubs; flowers are most beautiful and very fragrant, white buds, leaves are dark green and glossy. Pot plants, 25c each; field-grown plants, 75c and \$1.00 each. Extra heavy, \$2.00 each.

Cedar—Grown for their persisting evergreen foliage and striking habit.

Red Cedar No. 10—From Virginia. A well known ornamental tree; pyramidal shape; fine bronzy green foliage; very good for evergreen grouping; stands shearing well. Prices: Mail order size, 75c; 18 to 24 inches, \$2.25.

Cedrus Deodora—No. 13—One of the most beautiful evergreens grown in the South; brilliant for solitary effects through its grace and beauty; pyramidal in general outline; limbs or branches drooping gracefully; foliage blue-gray color. Price: 2 to 3 feet, balled and burlapped, \$5.00, \$6.00, \$7.50; 3 to 4 feet, balled and burlapped, \$6.00, \$8.00; 4 to 5 feet, balled and burlapped, \$8.00, \$10.00.

Cypress—Evergreens, cultivated for their graceful habit and the dark green or blue-green foliage, which is aromatic. Highly ornamental.

Arizona Blue Cypress No. 1—A handsome tree with brilliant silvery foliage, of pyramidal growth; stands shearing well. Fine for solitary effect. Also group planting. Price: 12 to 18 inches, \$1.00 each; 18 to 24 inches, \$2.00 each; 24 to 30 inches, \$2.50 each; 3 to 10-foot specimens at \$1.00 to \$1.50 per foot, according to fullness of tree. Large plants must be balled in earth.

Italian Cypress No. 7—Of columnar growth, very stately; adapted for Colonial and Spanish homes; unsurpassed for entrance decoration or wherever height is desired; for entrance chimneys, columns or on corner of houses. Price: Mail order size, 18 to 24 inches, \$1.00; sizes to 5½ feet, per each foot in height, \$1.00; 6 to 12 feet, \$2.00 per foot in height.

Euonymus—Erect plants, grown chiefly for their handsome foliage and the attractive fruits.

Euonymus Japonica—A very handsome evergreen for single shrubs or planting, very effective as background against the house, a splendid hedge plant. Will grow 6 to 10 feet if allowed; not a very rapid grower but very hardy and of long life, leaves dark green and glossy, thick and stays green all winter. No better evergreen shrub for any and all purposes. 8 to 10 inches from 2½-inch pots, 12½c; 12 to 15 inches, 25c; 18 to 24 inches 35c; 24 to 30 inches, 50c; 30 to 36 inches, heavy, 75c.

Golden Euonymus—10 to 12 inches high, 50c each.

Silver Leaf Euonymus—8 to 12 inches high, 35c; 12 to 18 inches high, 50c and 75c each.

Euonymus Seiboldi—10 to 12 inches high, 50c each; 15 to 20 inches high, 75c each.

Lang's Evergreen Special

- 1 Arbor Vitae
- 1 Italian Cypress
- 1 Arizona Cypress
- 1 Abelia Grandiflora
- 1 Euonymus
- 1 Amoor River Privet
- 1 Ligustrum
- 1 Boxwood

8 Plants all for \$2.50, postpaid.



Group Planting of Creeping Cedar (Foreground) and Juniperus Virginiana Glauca (Background)



Evergreens illustrated are: 10—Red Cedar; 11—Bonita Arborvitae; 12—Pfitzer's or Creeping Juniper; 13—Cedrus Deodora.

Jasmine Humile—No. 15—(Hulin's Yellow Jasmine)—Fine border plant of medium height, evergreen, graceful slender branches of drooping habit; with abundance of small yellow flowers during spring and summer; very effective during winter months. Prices: Mail order size, 25c; 2-year-old plant, 50c; 3-year-old plant, balled and burlapped, \$1.50 to \$2.50.

Juniper—Ornamental evergreen trees and shrubs grown for their foliage and habit. They have small needle-shaped foliage and berry-like fruits.

Pfitzer's or Creeping Juniper No. 12—The most satisfactory and hardy of the spreading or creeping Juniper type. Beautiful in its distinctive grayish-green color and irregular hat-spreading growth; fine for terrace or low planting about foundations. Prices: 8 to 10-inch spread, \$1.00; 18 to 24-inch spread, \$2.00.

Juniperus Virginiana Glauca—(See illustration on this page). The tall cedars in the background are especially valuable for large yards, parks, cemeteries and for specimen plantings. Very graceful and beautiful. Sizes 3 to 10-feet high, \$2.00 per foot in height. These are also balled in earth and are priced at \$7.50, \$10.00, \$15.00, up to \$25.00 each.

Ligustrum—Ornamental plants grown for their handsome foliage and profusely produced flowers.

Ligustrum Japonica No. 17—(Japanese Privet)—Evergreen, large shrub or tree with leathery dark green glossy leaves; white flowers, followed by large clusters of purplish seed; unexcelled for tall hedge effects or backgrounds. Prices. Mail order size 25c; 2 to 3 feet, 50c each; 3 to 4 feet, 75c each; and 4 to 5 feet, \$1.00 each.

Ligustrum Lucidum No. 19—(Wax Privet)—An evergreen of spreading cut of compact growth. Leaves are dark green, leathery and glossy. Very desirable for foundation planting. Prices: 10 to 12 inches high, 50c; 12 to 18 inches high, 75c and \$1.00; 18 to 24 inches high, \$1.50 to \$2.00 each; 2 to 4 feet specimens, \$2.00, \$3.00, \$4.00.

Ligustrum Nepulense—Low-growing, very heavy wax leaf, spreading fine for low evergreen. Plants 12 to 15 inches, 50c; 18 to 20 inches, \$1.00; 24 inches, \$2.00 each.

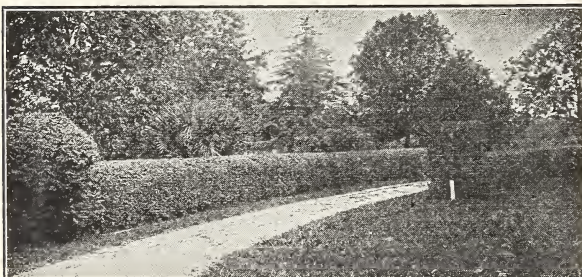


Evergreens and Hedge Plants illustrated are: 14—Photinia Serulata. 15—Jasmine Humile. 16—Abelia Grandiflora. 17—Ligustrum Japonica. 18—Golden Privet. 19—Ligustrum Lucidum (Wax Privet). 20—Amoor River Privet. 21—California Privet.

Magnolia—Grandiflora—Tree has large, bright green foliage and immense white flowers of great beauty and fragrance; it is native to Southern Texas. 2 to 3 feet, \$1.50; 3 to 4 feet, \$2.50 to \$5.00; large specimen plants, balled, \$7.50, \$10.00, and \$15.00.

Mahonia Aquifolia—No. 9—A beautiful evergreen shrub, with smooth shining holly leaves; stems are crowned with clusters of bright yellow flowers in March or April. The leaf color varies throughout the year, assuming all shades of green which changes to a reddish bronze during the fall and winter. Prices: 18 to 24-inch, \$1.50, \$2.00, \$2.50, \$3.50.

Nandina Domestica—(Chinese Bamboo) No. 6—A very handsome small to medium height shrub with graceful light green foliage which turns to a most attractive bronzy-red early in the winter. The small white flowers are produced in good sized erect panicles during the spring and are followed by crimson berries. A splendid addition to our evergreens and one that adds color at a time it is especially desirable. Outdoor pot-grown plants, 50c each; 12 to 15 inches tall, \$1.00; 18 to 24-inch bushes, \$2.00, \$3.00; balled and bur-lapped.



Amoor River Privet

Photinia Serulata—No. 14—Medium, tall, upright-growing evergreen shrub, with large, dark-green leaves; new growth at first is dark red, gradually changing to green as foliage matures; some of the older leaves change to rich crimson during winter. Price each: 18 inches to 3 feet, \$1.50, \$2.50, \$3.50.

Amoor River Privet (South) No. 20—This well known quick and easy growing hedge plant is the best in the South. Plant 12 to 18 inches apart. A very beautiful evergreen, dense in growth; dark green; will make a hedge in one year, or screen in unsightly buildings or fences in short time. Prices: 12 to 18 inches, 10c each; \$1.00 per doz.; \$6 per hundred. 18 to 24 inches, 15c each; \$1.25 per doz.; \$8 per hundred. 24 to 30 inches, 25c each; \$2.50 per doz.; \$15 per hundred. 30 to 36 inches, heavy, 35c each; \$3 per doz.; \$20 per hundred. 36 to 42 inches, heavy, 50c each; \$4.50 per doz.; \$35 per hundred. Extra heavy stock for large landscapes planting balled, 50 to 75c and \$1.00 each.

California Privet No. 21—Used almost exclusively for hedge planting; hardy and satisfactory, foliage dark green, almost evergreen. Prices: 12 to 18 inches, 10c, \$1.00 per dozen, \$8.00 per 100; 1½ to 2 feet high, 15c, \$1.50 per dozen, \$10.00 per 100; 2 to 3 feet high, 20c, \$2.00 per dozen, \$15.00 per 100; 3 to 4 feet high, 35c and 50c each, \$25.00 per 100.

Dwarf or Low Dense Privet No. 2—Dark-green foliage, compact growth, good for low hedging; fine substitute for boxwood. Shears well. Thrives in any kind of soil; great for lawn design work, as lettering, urns, etc. Price: Mail order size, 10c; Sheared size suitable for urns, 10-12-inch diameter, \$1.75.

Golden Privet No. 18—Has all the splendid habits of the California Privet except that leaves are beautifully marked with golden-yellow; excellent subject to mix with other evergreen to give variety of color. Prices: Mail order size, 25c; larger, \$1.00, \$1.50.

Pyracantha Lalandi—Medium to large growing shrub adapted to most any soil or location; greatly admired for their reddish-orange berry-like fruits which remain on the plant until spring. Price: \$1.50, \$2.50, \$3.50.

Lang's Flowering Shrubs

Quality We are grading our Shrubs into No. 1, No. 2 and No. 3 grades. All, however, will bloom the first year. No. 1 are the largest and strongest plants, some varieties 4 to 6 feet. No. 2, medium size and full. No. 3, smaller and lighter. Good stock.

Abelia—Grandiflora—Best evergreen flowering shrub grown of medium height. Thousands of small flowers until frost. 35c, 50c and 75c. Also note on Evergreen and Hedge Page. (See illustration on back cover page.)

Althea—(Rose of Sharon)—One of the hardiest shrubs grown, and for single specimens or grouping there is no plant that will give you better results. We grow them in great quantities and can give you plants in assorted colors, white, pink, purple, variegated. We also handle in double or single-flowering. The plants bloom from early summer until autumn. 75c, 50c and 35c.

Buddleia—(Butterfly Bush)—A shrub not so well known but which stands the heat and drought of summer remarkably well. A strong grower, often attaining a height of 6 to 8 feet. Foliage dark green and very heavy. Throughout the entire summer flowers of violet-purple with orange throat, very fragrant, are borne in long plumes. 75c, 50c and 35c.

New Red-Leaved Japanese Barberry—A Real Novelty in Shrubs—It is only once in a lifetime that a really worth-while outstanding novelty in hardy shrubs is introduced, and in this new Barberry we have such a plant.

	Each	Doz.	100
Strong one-year-old plants.....	\$.75	\$7.50	\$50.00
Heavy two-year-old plants.....	1.00	10.00	75.00



Buddleia



Crepe Myrtle

Bush Honeysuckle—

A fine, handsome, large growing shrub with upright and spreading branches. Foliage bright green, flowers borne freely during May or June, followed by red berries, which cling to the branches for several weeks. A vigorous grower and of easy cultivation. We can furnish this shrub in a beautiful shell pink, very fragrant. 75c, 50c and 35c.



HONEYSUCKLE

Crepe Myrtle—Few people realize the satisfaction from planting of Crepe Myrtle. When other plants refuse to bloom you can always find the Crepe Myrtle loaded with a mass of flowers. We grow in quantity the pink and crimson. It is especially attractive for hedging or grouping. 50c and 75c.

White Crepe Myrtle—75c and \$1.00 each.

Vitex—Or Chaste Tree—A valuable small tree with sage-like foliage; especially attractive because of its pale lilac flowers, which are produced in long spikes and which last a long time. Will grow where ordinary shrubs fail. 50c, 75c and \$1.00 each.

Lilac—(Everblooming Purple)—An upright, attractive shrub, greatly admired for its profusion of blue and purple fragrant flowers in early spring. A favorite in all sections. 50c, 75c and \$1.00 each.

Deutzia—An upright, thrifty shrub with a profusion of delicately beautiful white and pink flowers in spring. 35c, 50c and 75c each.

Flowering Almond—

Beautiful blooms set upon branches in early spring. White and pink. 75c and \$1.00 each.

Peach, Flowering—

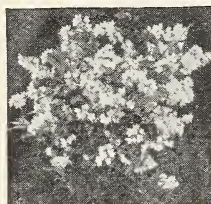
A small tree with foliage similar to the Peach tree, but the limbs are covered with dainty flowers similar to miniature roses. White and red. 75c and \$1.00 each.



Flowering Almond



Forsythia



Deutzia

Willow, Flowering—One of the most useful of yard shrubs; flowers all summer; grows to a height of 10 feet. 50c and 75c each.

Forsythia—(Golden Bell)—Highly ornamental early spring flowering shrub. Foliage deep green, flowers appearing before foliage is produced. 35c, 50c and 75c each.

Hydrangea, P. G.—A hardy shrub, producing immense flower heads of white and rose early in the summer. 50c and 75c each.

Lespedeza—Bicolor—Of strong, shrubby growth; very attractive because of its dark reddish-purple flowers. A hardy shrub which will stand the heat and drought of summer. Desirable because of its bright attractive coloring. 50c and 75c each.

Mexican Yucca—A beautiful plant for old-fashioned gardens or shrubbery beds. Hardy and fine grower. Grows in any soil. Strong plants, 50c and \$1.00 each.

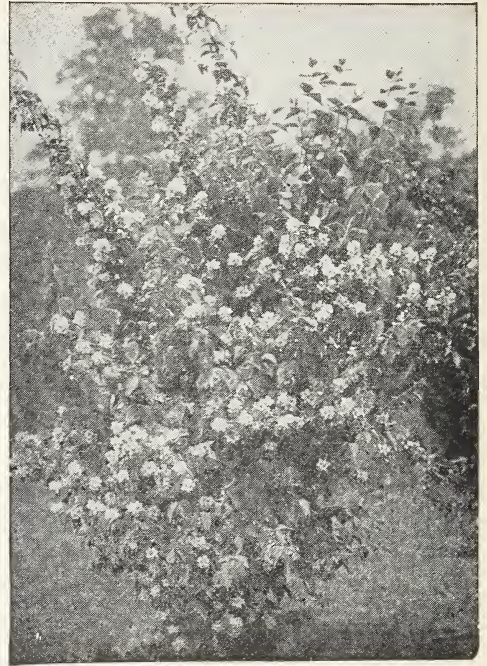
Philadelphus—Mock Orange—Upright growing, covered with large white fragrant flowers in spring. 50c and 75c each.

Philadelphia—Virginia—Flowers 2 inches in diameter that completely cover the branches in May and early June. Slightly fragrant, one of the most desirable. 50c each.

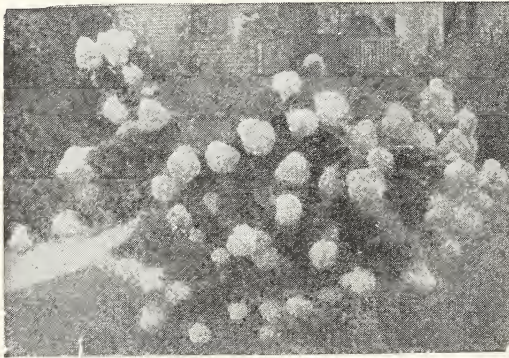
Poinciana—(Bird of Paradise)—This is truly a shrub for the Southwest, for it will thrive in any kind of soil and blooms throughout the entire summer. Foliage finely cut; lace-like; flowers pea-shaped, yellow with long red stamens. 50c, 75c and \$1.00 each.

Japan Quince—(Cidonia Japonica)—A beautiful shrub for early spring blooming. They produce immense clusters and bright red bell-shaped flowers before a leaf shows on the plant. 50c, 75c and \$1.00 each.

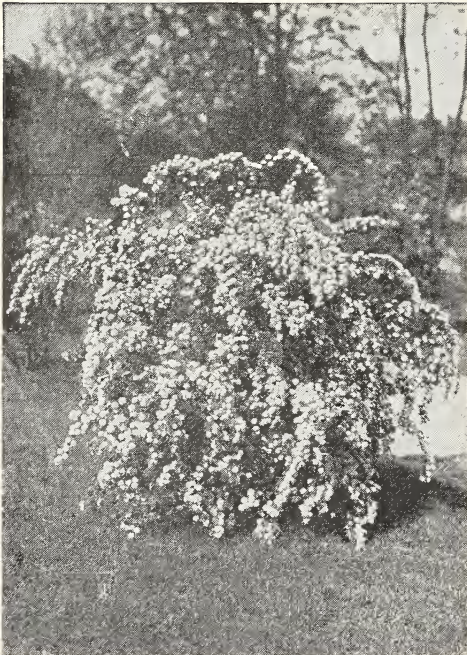
Purple Leaf Plum—(Prunus Pissardii)—Purple foliage. Double flowers cover the tree before any leaves are out. 75c and \$1.00 each.



Philadelphus or Mock Orange



Hydrangea, P. G.



Bridal Wreath (Spirea Van Houttii)

Pomegranate—A large shrub or small tree, which is grown for both fruit and flowers. Small shining dark leaves with scarlet flowers that are followed by large round fruit that ripens in late summer and fall. Two-year-old plants, 50c and 75c each.

Redbud—One of the most showy large shrubs or small tree. The branches are completely covered with lavender flowers early in the spring before the foliage appears. Very effective when used as a background for evergreens or lower-growing shrubs. 3 to 4-foot plants, 75c and \$1.00 each.

Snowball—Well known; the large globes of pure white flowers appear in the spring. 50c, 75c and \$1.00 each.

Salvia, Hardy—A beautiful shrub of recent introduction; flowers a beautiful red, very hardy and flowers from early spring until frost kills the flowers; the leaves stay green all winter. This shrub can be planted in any kind of soil and will stand more drought than any plant we grow. 35c, 50c and 75c each.

Tamarix—(Hispidia)—Tall, graceful, with juniper-like foliage and a great profusion of delicate pink flowers covering the entire surface. A handsome shrub at all seasons. 75c and \$1.00 each.

Weigela Rosea—Elegant, with fine rose-colored flowers, hardy, and blooms when quite small. One of the most popular and satisfactory shrubs. 35c, 50c and 75c each.

Weigela Eva Rathke—A gorgeous sight when filled in early summer with its blood crimson flowers. 12 to 18-inch, 50c each; 18 to 24-inch, 75c each.

The Spireas

An indispensable class of small-to-medium-sized shrubs, embracing a wide range of foliage, habit of growth, color of flowers and season of blooming. All of easiest culture in all soils.

Anthony Waterer—Beautiful low-growing, bushy, profuse-blooming plant; color beautiful rose shade. 75c, 50c and 35c each.

Billardii—One of the best pink flowering shrubs, fast grower, profuse bloomer; fine for beds; grows 4 to 5 feet. 75c, 50c and 35c each.

Chinese Blue—A shrub of moderate compact growth with gray downy leaves. Flowers bright blue, small, but in large clusters in axils of leaves; bloom all through summer. Very valuable for its unusual color and long-flowering period. 35c, 50c and 75c each.

Bridal Wreath—(Van Houttii)—The grandest of all the Spireas. It is a beautiful ornament for the lawn at any season, but when in flower it is a complete fountain of white bloom, the foliage hardly showing. Clusters of twenty to thirty flat, white florets make up the racemes, and these clusters are set close along the drooping stems. Perfectly hardy and an early bloomer. 35c, 50c and 75c each. Balled specimen plants, \$1.00 and \$2.00 each.

Hardy Perennial Plants

Coreopsis—The perfect strain of a long popular hardy plant. Flowers are rich golden-yellow, borne in great profusion nearly the entire summer. 15c each; \$1.50 per dozen.

Daisy, Shasta—The largest and perfectly hardy daisy grown; of spreading habit, a small plant will spread and produce ten to twenty-five blooms the first year and can be separated and make twenty-five plants the next season. Well shaped plants, 15c each; \$1.50 per dozen.

Gaillardia—(Blanket Flower)—Makes one of the most gorgeous and prodigal displays of all perennials. Flowers often measure three inches in diameter, on clean, two-foot stems. A hardy center of deep maroon is thickly bordered by petals of orange and yellow, ringed by circles of crimson, red and maroon. Poor soil will do, and a constant show is assured from June till frost. 15c each; \$1.50 per dozen.

Hardy Asters—(Or Cluster Daisy)—Lavender blooms borne in great profusion during late summer and fall. Very easily grown and a valuable fall flowering perennial. 18 to 24 inches tall. 25c each.

Hardy Ageratum—Late summer and fall, lavender blue; fine for border. Large plants. 25c and 35c each.

Hardy Sweet Peas—Very showy and persistent flowering, medium tall growing vine for covering low fences, rockeries, etc. Pink and red. 25c each.



Shasta Daisy

Hibiscus, Hardy—(Mallow Marvels)—A desirable, showy plant, succeeding in any sunny position. Grows 3 to 4 feet high, large foliage and great showy single flowers of delicate colorings. Colors: White with crimson eye, pink, red. 35c each. Stronger roots, 50c each.

Hollyhocks—Time-honored, stately, majestic, hardy plants, which are a necessary part of every old-fashioned garden and should also find a place interspersed with shrubbery, as clumps on the lawn or in the mixed border, where their colossal spikes of bloom produce bold and showy effects, which cannot be secured with any other flowering plant. We offer these in the following colors: Double, maroon, white, pink, yellow and red. 25c each; \$2.50 per dozen.

Lavender—(Cotton) Santolina—A sweet smelling, dwarf, ever-green perennial, with silver-white foliage, useful as rock or border plants, also largely used in carpet bedding or where a perennial dwarf border is desired; may be sheared and kept to any height. 10c each; \$1.00 per dozen; \$7.00 per 100.

Liatris—(Blazing Star or Gay Feather)—A splendid late summer-flowering plant with purplish blue spikes that retain their color all winter when cut and dried. 25c each.

Pampas Grass—Well-known perennial, succeeding most everywhere. A showy and ornamental species with large feathery plumes. 30c. Strong 2-year-old flowering size, \$1.50 each.

Phlox, Hardy—A hardy-flowering, low-growing plant with very pretty bright colored flowers by the hundred; blooms early and all summer. Named varieties:

Miss Lingard—Best pure white. **Lavender Queen**—Lavender, strong grower, free bloomer.

Prof. Virchow—Bright carmine. **Fine Plants 25c each; \$2.50 per dozen.**

Rynstone—Effective carmine-rose.

Pinks, Hardy—We have a fine assortment of these beautiful hardy flowering Sweet Pinks in assorted colors at 15c each; \$1.50 per dozen.

Rosemary—The aromatic leaves are used for seasoning soups, etc. 25c each.

Sage Plants—Two or three plants are all that are necessary to give you all the fresh and dried Sage needed. 20c each; \$2.00 per dozen.

Sweet Williams—All colors and shades. One-year-old plants, 15c each; two-year-old plants, 25c; \$2.50 per dozen.



Hollyhock



Phlox



Hardy Hibiscus

Vines and Climbers

Clematis—

Paniculata—Hardy climber. White, fragrant, star-shaped flowers. Two-year-old plants, 50c each.

Jackmanii—Very free-flowering and one of the most popular. Flowers large, of an intense violet purple. Two-year-old plants, \$1.00 each.

Honeysuckle—

Hall's Japan—Flowers pure white, changing to yellow; very fragrant; nearly evergreen; hardy and valuable. 50c.

Scarlet Trumpet—Hardy and vigorous. 50c.

Ivy—

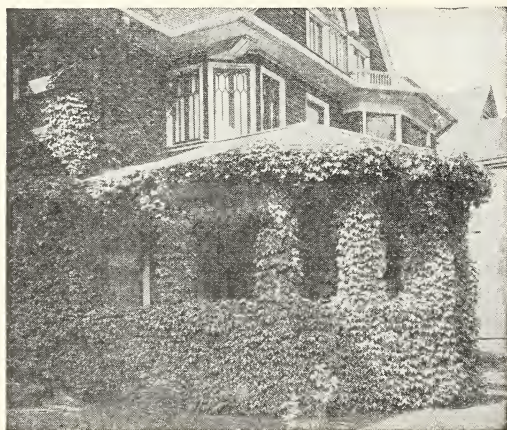
Parlor Ivy—A lovely and thrifty climber for the house or window; grows very quickly and makes an abundance of pretty green foliage. 10c each; 3 for 25c.

Boston Ivy (Ampelopsis Veitchii)—Vigorous creeper, desirable on walls, stumps, fences, etc. 50c and \$1.00 each.

English Ivy—One of the few evergreens. Clings to any tree or wall, brick or wood. Small plants, 15c each; large plants, 50c and \$1.00 each.

Kudzu Vine—

Fastest growing vine known, grows 50 to 75 feet. Large dark-green leaves; it bears small racemes or rosy-purple pea-shaped blossoms towards the close of autumn. A splendid subject for permanently covering verandas, dead trees, etc. 50c and 75c each.



Virginia Creeper



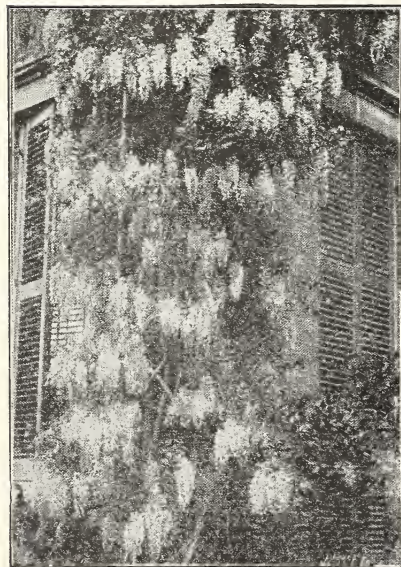
Honeysuckle



Clematis Paniculata

Mexican Morning Glory—Hardy Roots

Very strong-growing, hardy vine. Flowers trumpet shape, a beautiful shade of lavender. Blooms all summer. 25c and 35c each.



Wisteria

Moon Flower Vines—

Ready to Sell March 1st to May 15th.

White—So called from its rare peculiarity of blooming best at night, although it also expands its flowers on cloudy days. They are pure white; 5 or 6 inches across, emitting a rich Jasmine-like odor. 10c each.

Blue—Intense violet-blue, with reddish-purple rays, six inches across. It blooms in the morning and on cloudy days.

Queen's Wreath—

A lovely climber from Central Mexico with beautiful rose-colored flowers in racemes two feet long. The profusion of blooms is such as to give the resemblance of roses at a distance. Described by its discoverer as the most beautiful climber he has ever beheld. This is moderately hardy with protection. The vines are killed to the ground by frost, but it quickly shoots up in the spring, and develops its flowers from June till frost. 50c each. Large, heavy roots, \$1.00 each. See illustration on back cover.

Trumpet Vine—

For covering unsightly places, stumps, rockwork or wherever a showy flowering vine is desired, the Trumpet Vine will be found very useful. The flowers are large, attractive and borne profusely after the plants attain a fair size. Dark orange-red, two-year-old vines, 50c and 75c.

Virginia Creeper

The best and quickest growing variety for covering trees, trellises, etc. Large leaves with five leaflets, assuming brilliant yellow, crimson and scarlet colors in the fall. Clings to stucco and brick walls. Two-year-old vines, 50c.

Wisteria

White—A large, strong grower, with long racemes of white flowers. 50c and \$1.00 each.

Purple—A large, strong grower, with long racemes of purple flowers. 50c and \$1.00 each.

ROSES (*The Queen of Yard Flowers*)

Brief Cultural Notes

To grow Roses for success and pleasure, location of rose bed, soil, planting time and pruning are important factors.

A light, open location, so there may be a free circulation of air and accessibility to sunshine for at least half or more of the day, is most important.

Any properly drained, moderately heavy to heavy soil spaded to a depth of 14 to 18 inches with a liberal application of well rotted dairy manure or bone meal should produce excellent results.

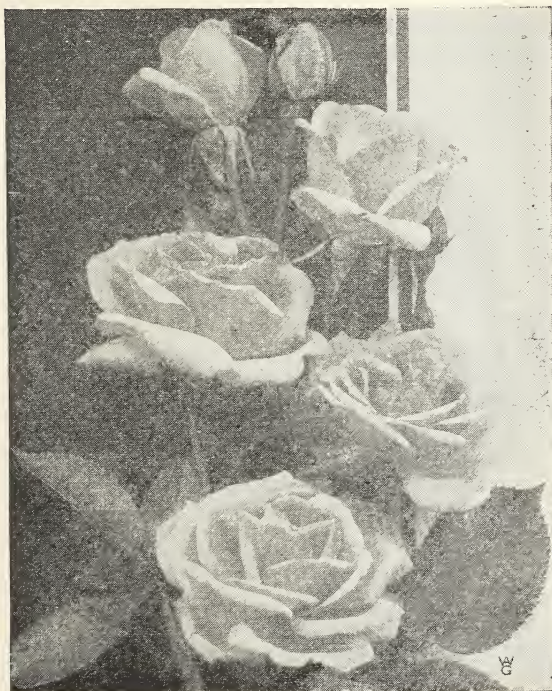
In the Southern States where severe freezes are infrequent, late fall and early winter plantings of both pot grown and field-grown rose plants are considered desirable, although not imperative, as very good results are usually obtained from plantings made during the early spring months, February and early March.

Pruning is for improving the productive power and the appearance of the plant. Remove all dead, weak, overcrowded or otherwise useless shoots by cutting them clear away to the base of the plant or to their starting point on the older shoots. After this thinning-out process, cut the remaining stems back about one-third to one-half, being careful to have the stems appear as regularly arranged and the plant as well balanced as possible. About two weeks before the foliage begins to come forth, or about the first to fifteenth of February, is considered about the proper time to prune Roses, shrubs and trees.

Mildew and Black-spot are the two most common and destructive diseases of the Rose. Both cause most trouble during the early spring and fall and this can be traced to the variable weather conditions prevailing during these seasons. Neither disease is curable, but both are to a large extent controllable by the diligent and persistent applications of fungicides, such as Bordeaux Mixture, Scalecide, Sulfocide, Lime, Sulphur, etc. If you will address Lang's Nursery Department and give us an outline of your Rose troubles, we will gladly prescribe the proper treatment.

Prices of Field-Grown Roses

(Can not be had after March 15th.) Time to plant all Field Roses, Shrubs and Trees: November 20th to March 1st. Small Pot Roses can not be had before January 1st. Time to plant: January 1st to May 1st. Roses under this list: 75c each; \$7.50 per dozen; one-year-old, out of 2½-inch pots, 25c each; \$2.50 per dozen.



Jonkheer J. L. Mock



Sunburst

Yellow Shades

Claudius De Pernet—There is no doubt but what this is the best yellow rose in existence today. Long buds on long stem; strong field-grown, \$2.00 each; pot roses \$1.00 each.

Lady Hillingdon—At the Detroit Rose Show, this was awarded the sweepstakes over all yellow roses. It has long willow stems; the buds are held upright; has a long slender pointed bud of brilliant deep golden-yellow. Awarded gold medal.

Luxemburg—A deep copper-yellow, shaded with coral; petals thick and leathery.

Mrs. Aaron Ward—One of the most delightful roses of recent years in a color that catches the eye at once. Coppery-orange in the open bud, golden-orange when partly developed, pinkish-fawn of lovely shade when fully open, when it looks like a full fluffy silk rosette.

Sunburst—Best yellow to date, full long bud and double, free bloomer.

Pink Shades

Priscilla—Large long buds opening to a fine very double bloom, borne on strong long stems; lasts exceptionally well. For cutting. Color very deep pink, changing to soft rose-pink.

Columbia—It is a big Rose, the open flower measuring six inches. The color is a true pink, deepening as it opens to glowing-pink. A peculiarity of the variety is that the shades all become more intense until the full maturity of the open flower is reached and this color is enduring; a great Rose.

Jonkheer J. L. Mock—This grand Rose is the strongest growing in the Hybrid Tea class. The blooms, which are produced with the greatest freedom, are carried on stiff and erect stems and are of the largest size, of perfect formation and highly perfumed. Color clear imperial-pink; a glorious flower. Awarded two gold medals, one silver medal and five first prizes in Europe. We can confidently recommend this sterling novelty as a most valuable addition.

Los Angeles—Originator's description: "Los Angeles is, by all odds, one of the finest Roses ever introduced. The growth is very vigorous, and produces a continuous succession of long-stemmed flowers of a luminous flame-pink toned with coral and shaded with translucent gold at the base of the petals. The buds are long and pointed and expand into a flower of mammoth proportions, while the beauty of form and ever-increasing wealth of color is maintained from the incipient bud until the last petal drops."

Commonwealth—Bud large, long, pointed; flower large, open, double, very lasting; deep pink, solid color; borne singly on medium strong stem; moderate fragrance. Foliage sufficient, leathery, medium size, rich green, disease resistant. Few thorns. Vigorous, upright.

Salmon Shades

Mme. Edward Herriott—The bud is long, slender and pointed; the color is like sunshine on a copper-red metal. A wonderful color combination; in effect a true salmon.

Ophelia—Described by the introducers as the most beautiful Rose of the century. The color is salmon-flesh, shaded with rose. The blooms are carried high on good stiff stems and are well shaped. It is strongly and delicately perfumed. The habit of growth is bushy and free-branching and the variety produces blooms freely.

Red and Crimson Shades

American Beauty—This first of all on the list is without doubt the American Beauty, the largest and best, the healthiest grower, the finest flower and the most fragrant of roses. We have alone thousands of this one kind, as there is such a demand for them that we always sold out before the season was over. Our stock consists of fine three-year-old plants.

Crusader—Blackish-crimson in color, a wonder. A big, strong-growing variety, robust and rugged in every characteristic. The growth is heavy and the flower stems are strong and heavy, producing very little blind wood. It is free-growing and free-flowering, and the blooms are truly characteristic of the variety—big and double, and, in color, a rich, velvety crimson. These large, heavily petaled blooms open perfectly and are amply supported by the strong-necked, heavy flower growths.

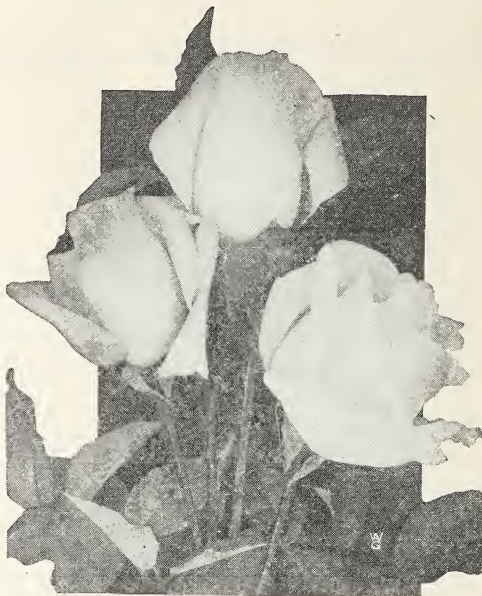
Edward Mawley—A splendid hybrid tea rose with immense buds and mammoth fully developed flowers. Color rich dark velvety crimson. In our opinion one of the best red roses grown.

Etoile De France—It is a strong, vigorous grower with good dark foliage and its large flowers which are full and double and of beautiful form both in the buds as well as full bloom; flowers are borne on strong upright shoots in the greatest profusion. In color it is distinct from all Roses of its class, being of a rich, velvety crimson.

Francis Scott Key—"The Rose for every garden of every American home." Named in honor of the writer of the "Star-Spangled Banner." This splendid rose produces intensely black grain scarlet-crimson blooms on strong shoots of sturdy erect growth, embellished with a foliage of the deepest green.

Hadley—In color it is a deep velvety crimson, retaining its brilliancy at all seasons of the year. The variety is double and buds are well formed. The fragrance is excelled only by American Beauty. It is strong, rapid grower and the flowers are borne on long, stiff stems.

Sensation—As the name implies it is a "Sensation," due to the color and habit of growth. Anyone that has seen Premier can imagine what this is like, being better in every way, color, foliage and growth. Buds long and pointed, opening full and double and retaining its color in the open flower. Blooms produced on long stiff stems well above the foliage and in great profusion. Color an entrancing shade of red.



Priscilla (See page 17)

Standard Roses

All Roses under this heading are for extra select plants, 2 and 3-year-old, 50c each; \$5.00 per dozen. Pot grown, 15c each; \$1.50 per dozen. If by parcel post, add 25c per dozen for large plants and 15c per dozen for pot roses.

White Shades

Kaiserin Augusta Victoria (A Hybrid Tea Rose)—Soft, pearly-white, lightly tinted with lemon in the center, remarkably fragrant; a strong, healthy grower, with beautiful foliage. The flowers are borne on long stems. This is the best white Rose for outdoor planting, as it gives more flowers than any we ever knew.

White Killarney—The same in shape and form as Pink Killarney, only a pure white; buds long and pointed; petals very large, making a very large rose when open; a free bloomer and strong, healthy grower.

White Maman Cochet—A pure white, hardy, ever-blooming Rose and one of the most valuable in the entire list. For size, hardiness, vigor, profusion of blooms, it is unsurpassed. A superb summer Rose for cut flowers.

Red and Crimson Shades

Helen Gould—Long, beautiful buds and full double flowers of rosy-carmine. Color nearest shade to the famous American Beauty. Flowers borne well above the foliage. Helen Gould should be in every planting because of its hardiness, beauty and profuse blooming qualities.

Red Radiance—A glowing crimson-scarlet sport of Radiance with all the magnificent qualities. The enormous globular flowers on heavy canes are a sight to be long remembered.

Gross An Teplitz—For intense and dazzling color, there is no Rose to compare with this splendid kind. The flowers a large and handsome moderately double of splendid substance and produced in great profusion during the whole growing seasons. Color, a fiery-crimson with a dark velvety sheen.



Etoile De France



White Maman Cochet

Pink Shades

Madame Caroline Testout—Clear bright satiny-pink; flowers very large and extremely showy.

Pink Killarney—The color is an exquisite shade of deep shell-pink. It is free in growth, and heavy shoots which are crowned with buds.

Pink La France—The flowers are very large, double, delightfully fragrant, light silvery-pink; blooms continuously throughout the season and stands first among the Roses for our climate.

Pink Maman Cochet—The growth is free and vigorous, very free-blooming; flowers of splendid substance are a delightful shade of deep pink. The buds, long and pointed, full and firm, lasting a long time when cut.

Pink Radiance—In this variety we have an absolutely distinct and magnificent Rose of the highest excellence. It is a strong, vigorous grower, of free and erect branching habit, with very large and massive dark green foliage. Flowers very large and massive, of a lovely glowing pink color, distinctly shaded to white at base of the petals. The outer petals are shell-shaped and extremely large, giving a half-opened flower of great spread. This is a fine American pedigreed sort. A fine garden Rose.

Yellow Shades

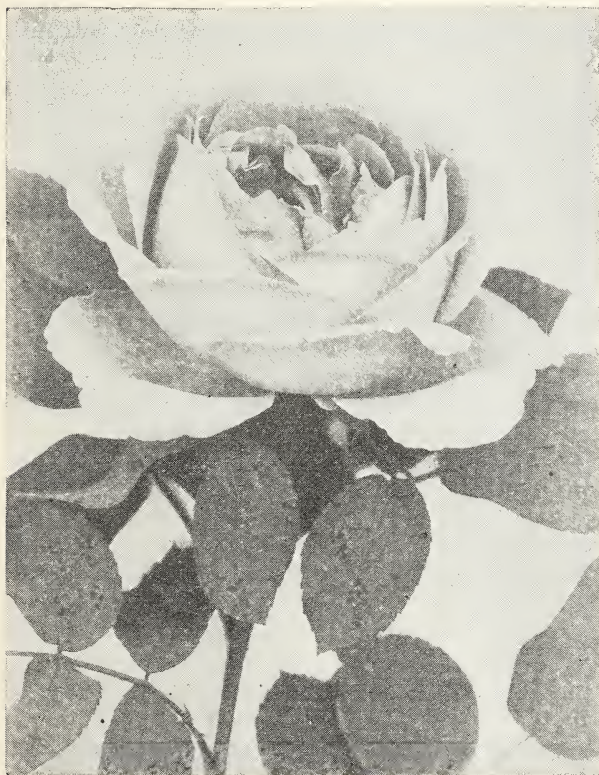
Etoile De Lyon—One of the best and most beautiful yellow Tea Roses for general planting; may be had in bloom the entire year by proper treatment. The flowers are of good size, deep, full, very sweet-scented, rich, golden-yellow.

Lang's Special Rose Offer

In order to reduce our surplus in certain varieties and of those where labels are lost, many of these roses belonging in the 75c and \$1.00 class. All everblooming, all strong 2-year-roses only \$3.50 per doz., not labeled.



Pink Cochet



American Beauty (See page 18)

Hybrid Perpetual Roses

Field Roses, 75c; Pot Roses, 25c.

Paul Neyron—Deep rose; flowers of immense size; indeed, many claim this to be the largest Rose grown.

Pink Frau Karl Druschki—This is a pink, or rather a tender, rose-colored form of the popular white Frau Karl Druschki, possessing not only the exquisite form, large size, and remarkable free-flowering habits of its parent, but in addition to this, it is also highly perfumed, a Rose worthy of a place in every garden.

White American Beauty (Frau Karl Druschki)—This fragrant White Rose has become renowned as the very highest type of its class and the best snow-white Rose ever introduced. It is an extraordinarily strong grower, and has the vigor and hardiness of an oak. Its magnificent flowers are nothing less than glorious—immense in size and produced with great freedom. The color is a marvelous white, without a tinge of yellow or any other shade. A true paper-white, the standard by which all white roses are judged.

Rose Hugonis—(Golden China)—This is a valuable addition to our list of Roses. Every branch of the previous year's growth is, in late April and early May, closely set on both sides to the very tips with exquisitely beautiful, single, clear yellow flowers, almost concealing the foliage.

The long arching sprays make Hugonis not only a beautiful shrub to be planted, if one so prefers, with other shrubs, but when cut, are charming as table decorations.

It attains a height of six feet by the same in width. The young growth coming from the roots show a beautiful reddish-maroon. Foliage turning to a pleasing purple in fall. Strong one-year-old plants, 50c.

Climbing Roses

All field-grown Climbing Roses, 75c each, except where noted:
Pot Roses, 25c, except where noted.

White Varieties

Climbing Kaiserin Augusta Victoria—The first white, hardy, ever-blooming climber. The flowers are extra large, deep, double, of excellent substance and are produced on long, stiff stems, like a forcing rose. The buds are long and pointed; the fragrance is delicious. Blooms continuously the first year.

Climbing White Maman Cochet—Here we have a climbing form that will become as popular a climber as its parent has as a bush rose. Grand, huge white flowers tinged pink.

Silver Moon—Different from all other Roses. Flowers are large, single, four and a half inches in diameter. Pure white in color. Petals of great substance, beautifully cupped. The large bunch of yellow stamens in the center adds to its attractiveness. The flowers are borne on long stems 12 to 18 inches long and are delicately perfumed. The plant is a strong grower, with large, glossy, green foliage.

Pink Varieties

American Pillar—Magnificent climber, dark foliage held well into the winter months, making this splendid Rose almost an evergreen. Flowers large, single, rich rosy-pink, with glint of white at center.

Tausendschoen, or Thousand Beauty—A climbing Rose that comes to us from Germany. The flowers upon first opening are the most delicate shade of pink ever seen in a Rose, might be described as a white delicately flushed pink, changing to rosy-carmine. It gets its name from its many flowers and the variation in coloring; beautiful, and very popular.

Climbing Columbia (Hybrid Tea)—Sport of Columbia and has all the desirable features of its parent with a strong climbing tendency, growing 10 to 15 feet in a single season. Foliage deep glossy green immune from disease and insects. Hardy in any location. Blooms with the greatest freedom the entire season. Buds and blooms of immense size often measuring six inches in diameter, of perfect formation, borne singly on long shoots. Color clear imperial-pink, beautifully dark-veined and delightfully fragrant.

Climbing Pink Radiance—This grand, giant-flowering Rose stands head and shoulders above all other Roses of its class. The flowers, which are all splendid form, are large and full, and somewhat of the June Rose type. A lovely rose-pink color. A fine variety, especially on account of its value as a summer cut-flower variety. Very free in growth and production of bloom, has good habit, and the lasting qualities of the flowers are wonderful. Extremely clear. Sweet scented. Prices: one-year 50c each; two-year field-grown 75c.

Yellow Varieties

Marechal Neil—The immense size, dark, golden-yellow color of Marechal Neil is familiar to all. Peerless in color, unexcelled for size perfect in form, after more than a quarter of a century it still remains the ideal climbing tea rose. Large, fine plants, \$1.00 each; Pot Roses, 25c each.

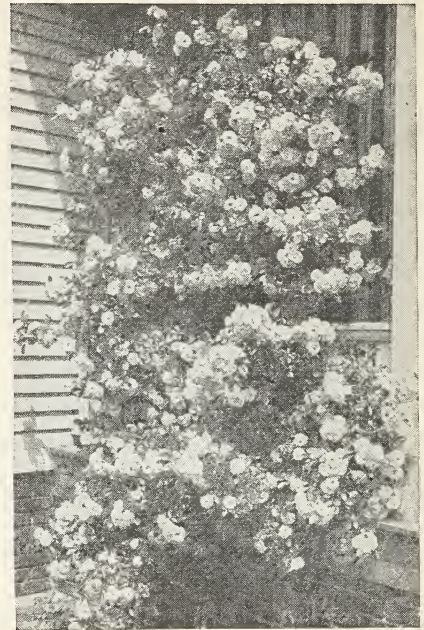
Red Varieties

Climbing Gruss An Teplitz—A climbing form of Gruss an Teplitz. Unquestionably one of the finest climbing roses ever introduced. The color when first opening is very dark rich crimson, quickly changing to bright scarlet, shading to velvety fiery red. The flowers are very showy and handsome. Remarkably healthy and vigorous; almost immune from all diseases.

Paul's Scarlet Climber—Brilliant vivid scarlet; color maintained without burning or bleaching until the petals fall. Flowers medium semi-double, produced in clusters, and covers bush from top to bottom. This is without question the most important addition to our Climbing Roses.



Paul's Scarlet Climber



Tausendschoen or Thousand Beauty

Climbing American Beauty—A seedling from American Beauty with Wichuriana and Tea blood in its veins. Same color, size and fragrance as American Beauty, with the addition of the climbing habit; good foliage and better blooming qualities. One plant of this new Rose will produce twenty times as many flowers in June as the old American Beauty, besides blooming occasionally during the summer; blooms 3 to 4 inches across; has proved perfectly hardy and stands heat and drought as well as any rose in our collection. Large plants, \$1.00 each.

Climbing Red Radiance—Large, globular, cupped blooms, of strong, clear red, with no trace of any other color. An exceptionally vigorous grower, sending forth heavy canes, with healthy foliage. Very liberal in producing blooms, it cannot be surpassed as a red climbing rose. Extremely hardy. Prices: one-year, 50c; two-year field-grown, 75c.

The Polyantha Roses

A type of Rose which is very popular for bedding purposes. They form shapely, compact, bushy specimens, about 18 inches high, producing in great profusion from early spring until severe frost immense trusses of small flowers. **Field Roses, 75c each; Pot Roses, 25c each.**

Baby Doll or Tip Top—Brilliant golden-yellow, tipped with clear, bright cerise; lovely miniature "Sweetheart" buds and blooms of perfect form, borne singly, in erect panicles; foliage very handsome.

Baby Dorothy, Pink Baby Rambler—A prolific producer of pure pink flowers. This rose has all the good qualities of the Crimson Rambler.

Cecil Brunner—The most beautiful of all Polyantha or Baby Roses. Color bright salmon-pink.

Orleans (An Improved Baby Rambler)—The color is irresistible, being deep cerise or geranium-pink with distinct showy center of pure white. This Rose has taken Europe by storm.

Le Marne—Dwarf, perpetual flowering. Semi-double flowers, bright salmon-rose at the edges, rosy blush inside. Blooms abundantly and continuously in bouquets of 15 to 40 flowers.

PLANT GOOD ROSES

Feed them water, prune them, and you will always have a fine rose garden.

Lang's Select House and Yard Plants

Acalphas—*Sanderia* (Chenille Plant)—One of the most striking flowering ornamental plants we have ever seen. It is of strong, free growth, with large dark green leaves, from each axil of which thick, rope-like spikes of velvety crimson flowers are gracefully suspended. **15c each; \$1.50 per dozen.** Finest yard plant grown. Ready March to July.

Triumphans—Very bright, ovate-pointed leaves, light red, shaded and marbled. A fine ornamental plant for bedding or pot culture, as showy as *Coleus*; its colors are bright and distinct. **15c each; \$1.50 per dozen.**

Alternanthera—Beautiful dwarf plants of a compact habit, growing about six inches high, and admirably adapted for edging flower beds. A plant for the hot summer places.

Aurea Nana—Bright golden-yellow, holding its color well the entire season. **50c per dozen; \$4.00 per 100.**

Amoena Spectabilis—Crimson-pink and brown; the finest and brightest. **50c per dozen; \$4.00 per 100.** Plant outdoors after April 15th.

Artillery Plant—A pretty little plant of drooping habit, resembling the Fern; it is a fine basket plant. **10c each.**

Begonias—Old-fashioned favorites well worth a place in every home.

Begonia Gracilis Luminosa—Foliage resembles a little that grand old variety, *Vernon*. Rich, glossy-green, often shaded deep bronze. The flowers, when first opening, are of bright cherry, changing to a clear coral-red. **15c and 25c each.**

President Carnot—A remarkably strong-growing variety of stiff, upright habit, somewhat in style of *Begonia Rubra*, but much larger in flower and leaf. Flowers beautiful coral-red in large pendant panicles. **15c and 25c each.**

Rubra—Dark, glossy green leaves; free-flowering; flowers rich coral-red in large pendant panicles. One of the best. **15c and 25c each.**

Argenta Guttata—Has the silvery-leaf blotches of *Alba Picta* with the form and beauty of *Rubra*; purple-bronze leaves, oblong with silvery markings; flowers white on the tips of the stems. **15c and 25c each.**

Feastii—Double curled; same as old *Beefsteak Begonia*, only beautifully curled, rapid grower, very ornamental. **25c and 50c each.**

Rex Begonia (Painted Leaf Begonia)—(See cut). These are grown for their handsome variegated foliage. For house culture, baskets, vases, etc., there is nothing more beautiful. We have a fine assortment. **35c and 50c each.**

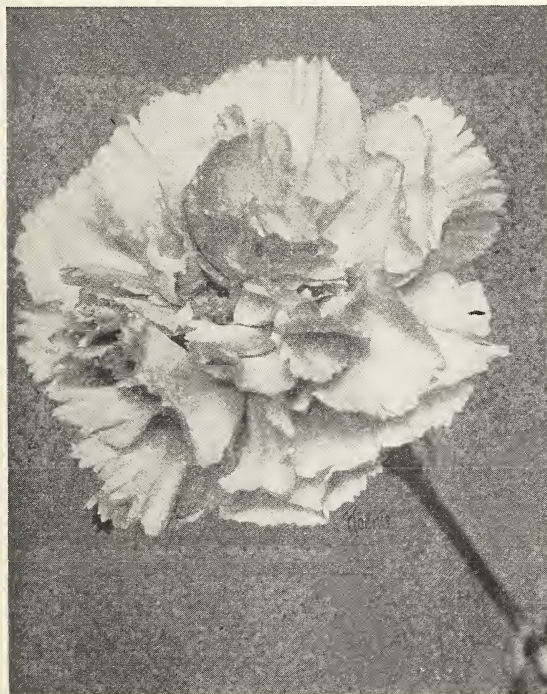
Coraline Lucerne—A superb new variety of the Coral Begonia, producing gigantic trusses of bronzy-red flowers and flowering continuously from April to November. The foliage is dotted with silvery-white. Blooms last from a month to six weeks, and are borne in immense clusters, almost hiding the plant. The color is bright coral-red, changing to a delicate pink. **Nice plants, 30c each; 3 for 75c.**



Coraline Lucerne Begonia



Rex Begonia



Enchantress

Banana Plant—(Tropical)—Nice strong roots of this beautiful plant will make a growth of 6 to 10 feet first year. **50c each; larger plants \$1.00 each.** Plants 6 to 7 feet \$2.50 each. Express only.

Bougainvillea—(*Sanderiana*)—Most desirable plant for conservatory or window garden. They are of strong, rapid-growth and produce their lovely, brilliant, rosy-crimson flowers from early in March until mid-summer. With extra care and attention they will bloom the greater part of the year. **25c each; large plants 50c and \$1.00 each.**

Carnations—A flower for everybody; good for any occasion; easy to raise and a flower everybody likes. **15c each; \$1.50 per dozen.** Large plants for winter blooming, **25c each.** January 1st to April 15th. A double flower in red, white and pink.

Chrysanthemums—Should be planted April 1st till June 1st. Planting during this period they will produce good stocky plants with good quality flowers.

Dig the ground deep; put in quantities of manure. The Chrysanthemum is a heavy feeder; if fed well the flowers will be large and the plant strong.

Disbudding—When your plant is eight inches high, cut back to a height of six inches. Allow four shoots to grow from this main trunk. When these four shoots are four inches high, pinch out the terminal bud and save three or four branches that will spring from each of these limbs. Allow these last branches to attain a height of nine inches, then pinch back for the last time. Allow one bud (flower) to each stem, and that a terminal bud. Follow these directions carefully for best results.

Price: **15c each; \$1.50 per dozen.**

WHITE SHADES

White Chieftain—A beautiful, incurving white of perfect shape. Certificated in Boston, Philadelphia and Chicago. Perhaps the finest incurved white commercial variety in cultivation today.

For the best yard fall flowering plant, plant Pompons in variety. Once planted, will come back every year. Require very little attention, but should have fairly rich soil to make a big showing.

White Frick—A large incurved variety of a medium long stem; flowers about mid-season and greatly admired by all lovers of Mums.

Smith's Advance—This variety displaces every other of its date—first early; it is a lovely grower, free from tricks, and can be had in bloom at any time following a season of growth; a very high grade, pure white bloom; can be had late in September and into October; it has a stiff stem 3 feet and over, nice foliage and a beautifully formed flower very slightly reflexed.

PINK SHADES

Rose Perfection—A seedling from Chieftain but is brighter and more constant in color. Can remain uncut after full maturity without impairing its beauty. An easy propagator. Height, 3 feet. Matures first week in November.

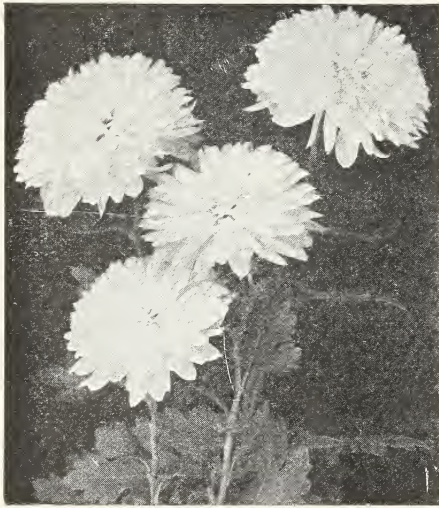
Smith's Enchantress—(E.) Uniformly intense rose-pink; extremely prolific. Probably the most dependable and satisfying of all the early pink varieties.

Pacific Supreme—A longer-stemmed, brighter colored Glory Pacific, maturing at the same time. Very early.

Dr. Engelhard—Grand commercial variety; color pink; stem and foliage perfect. Mid-season.

RED SHADES

Black Hawk—The largest and most beautiful dark crimson scarlet yet introduced; looks like crimson velvet, the very shade so much desired in Chrysanthemums; flowers of immense size on fine stiff stems. Late.

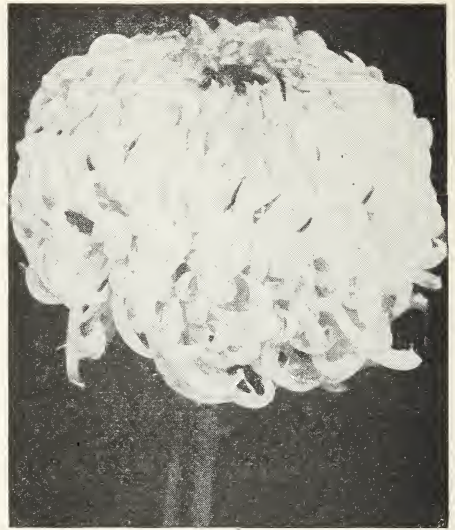


White Chieftain "Mum"



Crotons

Plant more foliage plants. Beautiful in yard pots and window boxes. Coleus Crotons Acalphas never fail.



Chrysolora "Mum"

Harvard—A splendid new variety of red Chrysanthemums, of a strong upright growing habit, flowers large, very double and of darkest crimson color, reflexed petals and strongly recommended as an exhibition variety in its color.

BRONZE SHADES

Wm. H. Waite—A very bright bronze, approaching crimson. Strong growing and easy to manage. Dwarf.

YELLOW SHADES

Golden Wedding—Nothing finer among yellows; shines like burnished gold; the standard for measuring color; 4½ feet. Mid-season to late.

Chrysolora—This splendid strong-growing, early-flowering "Mum" should be in every garden.

Tiger—There is no yellow which possesses so many points of excellence, especially for those who cannot give the highest state of cultivation. It is always double with very sturdy stems and is a good bright yellow regardless of date of planting.

Yellow Turner—A light yellow sport from the popular Wm. Turner and equal to its parent in every respect. Semi-dwarf. Date of bud, August 30.

Pompons—This lovely family of Chrysanthemums has been "coming" for years, and now it has certainly "arrived." No flower is quite so popular while it is in season, and flower buyers anxiously look for its coming and regret when it can no longer be had, for the ladies all over the country realize that it is the most effective flower for home decoration that can be had in the autumn. **10c each; \$1.00 per dozen.**

Ethel—A bright red baby pompon. Gorgeous in color and free-flowering. Is also exceptionally fine when grown as a pot plant.

Padoka—A very free-flowering baby pompon, color, light salmon, dwarf, maturing October 20.

Golden Oriole—The earliest single yellow, maturing October 10. Flowers 2½ inches in diameter. Color, light yellow. A vigorous grower, producing abundance of long-stemmed graceful sprays.

Frank Wilcox—An orange-bronze, dwarf habits. Flowers the middle of November and later and as it has excellent keeping qualities it may be easily held for Thanksgiving use.

Cigar Plant—(Ladies' Cigar Plant)—This is a well-known ever-blooming plant of neat habit, growing about 12 inches in height. The tube of the flower is scarlet, with the end partly white and crimson; very useful as ribbon line or front border plant. **10c each; \$1.00 per dozen.**

Coleus—We have a splendid collection of this justly popular foliage plant, and can supply any color desired. We have not space here to name and describe them, but we have about twenty sorts to choose from, and all good ones, just the shades of color you desire, and we can please you in selection. We have all shades of red, yellow, purple, green and speckled, spotted and mottled, and we can supply any color or mixture of colors. **Price for nice plants, 10c each; \$1.00 per dozen.** Plant outdoors after April 1st.

Coleus Christmas Gem—(Brilliantcy) (Dr. Ross)—Leaves immense, eight to twelve inches long. Cannot be excelled as a pot plant. The name aptly describes the appearance of this variety, which belongs to the giant-leaved section; of strong, vigorous habit. Leaves are of bright carmine, shading off to a deep maroon, the margin being yellow and green, the whole leaf having a rich velvety lustre. **15c and 25c each.**

Crotons—A very handsome foliage plant, stands the sun better than any plant we know; is more ornamental than palm or fern, as it is always bright and pretty, either in pot or yard. Try one. **35c, 50c, \$1.00 and \$2.00 each.**

Cyclamen—(Splendid Cyclamen for Winter Blooming)—Flowers of extraordinary size, and of great substance. The leaves are proportionately large and beautifully marked. These are among the most beautiful winter and spring flowering plants for the window and greenhouse.

Not only are the flowers of striking beauty, but the foliage is highly ornamental. The colors range through shades of pink, crimson, white, spotted, etc. Most of them are, moreover, delicately fragrant. **Fine large plants, \$1.00 and \$2.00 each.** Ready to sell November 1st to April 1st only. **Small plants with buds, 75c.**

Cyprus Alternifolius—(Umbrella Plant)—A grass-like plant, throwing up stems to the height of about two feet, surmounted at the top by a cluster or a whorl of leaves, diverging horizontally, giving the plant a very curious appearance. A splendid plant for the center of baskets, vases or porch boxes, or as an aquarium plant. **15c, 25c and 50c each.**

Ficus Elastica—(Rubber Tree)—Nothing better for table or house decoration. Its dark-green shiny foliage is always handsome, and its constitution is such that it is able to stand the excessive heat and dryness of the ordinary dwelling house without injury. **Nice large plants, by express, 75c, \$1.00 and \$2.00 each.**

Ferns—

Ferns of all varieties to be had the year round. The small plants can only go by mail, but all should go by express; it gives you better and larger plants.

See Page 42 for Wrought Iron Ferneries with Copper Bowls.



Nephrolepis Bostoniensis



Asparagus Sprengeri



Cyclamen

Boston Fern—
15c, 25c, 50c,
\$1.00, \$2.00,
\$3.00 and
\$4.00 each.
Ostrich Plume
Fern (Whit-
manii)—15c,
25c, 50c,
\$1.00 and
\$2.00 each.
Compacta—
25c, 50c and
\$1.00 each.

Nephrolepis Bostoniensis (See cut) (Boston Fern)—The popularity that this plant has gained in the short time since introduction is simply marvelous. It is one of the finest decorative plants ever introduced. Grows rapidly under all conditions, and its inexpensiveness places it within the reach of everyone. Often called "Fountain Fern" on account of its gracefully drooping habit. Fully matured fronds often attain a length of four feet. **Large plants, by express, 25c, 50c and \$1.00.**

Plumed Scotti Fern (*Nephrolepis Scholzei*)—The ideal plumed Fern, holding the same position to all other plumed varieties that Scotti holds to the old Boston. It is a sport from Scotti, possessing all of the merits of that most popular variety, but with the pinnate subdivided, giving it an airy, feathery appearance. **Nicely shaped plants, large size, 50c, 75c and \$1.00 each.**

Adiantum Cuneatum (Maidenhair Fern)—Very popular; the most graceful and useful in cut-flower work. **25c and 50c each.**

Neph. Whitmanii—The finest all-cut leaves of the *Nephrolepis* variety to date. Plants rare and costly, but they are so rare and dainty that you will not regret having bought at least a small plant. **25c, 50c and \$1.00 each.**

Nephrolepis Cordata Compacta—A dwarf, compact-growing form of Sword Fern. Making sharply pointed plants 2 feet high when fully matured. Its deep green fronds have just enough arch to make them graceful. **25c, 50c and \$1.00 each.**

"Teddy Junior"—It is a sport from the now famous Roosevelt Fern. The fronds have an attractive wavy appearance, which adds materially to their charming decorative effect. "Teddy" will produce about four times more fronds than any other Fern. It is a compact, vigorous grower, will thrive under most adverse conditions, making an exceptionally rapid growth and producing a plant of rare beauty and perfection without special care or attention. **Finest pedestal plant produced. Fine young plants, 25c each; larger size, 50c and \$1.00 each.**

Asparagus Ferns

Plumosus Nanus—A beautiful climbing plant, with bright green, graceful arched foliage, surpassing Maidenhair Fern in grace, delicacy of texture and richness of color. The fronds are 12 to 15 inches long and taper to a point from a width of 12 inches. One of the most beautiful decorative plants. **Nice plants, 15c and 25c each; large size, 50c and \$1.00 each.**

Sprengeri—Especially useful to grow as a pot plant for decorative purposes, for planting in ferneries or suspended in baskets. It grows freely the whole year and makes an excellent house plant. A vigorous grower, producing sprays 4 to 5 feet long of fresh green, feathery foliage. Useful for bouquets, wreaths or sprays, remaining perfect for weeks after cutting. **Strong plants, 15c and 25c each; large, 50c to \$1.50 each.** (See cut.)

Firecracker Plant—(*Russelia Juncea*)—It is a beauty; very valuable for basket and vases. **10c each.**

Fuchias—We have no plant that can equal in grace these denizens of the forests of our southern hemisphere. Grow in a shady place in summer in soil composed largely of leaf mold or sandy loam. Grow in sunny window and turn frequently to the light. 25c each. Ready to sell February 15th to April 15th.

Geraniums—We grow over 100,000 Geranium plants, shipping them over many states—no better or finer stock or variety can be found anywhere. Try a few. Small size named varieties, 15c each, \$1.50 per dozen; larger size, 25c and 35c each, \$2.50 and \$3.50 per dozen. Unnamed varieties, 10c each, \$1.00 per dozen; larger plants, 25c each, \$2.50 per dozen.

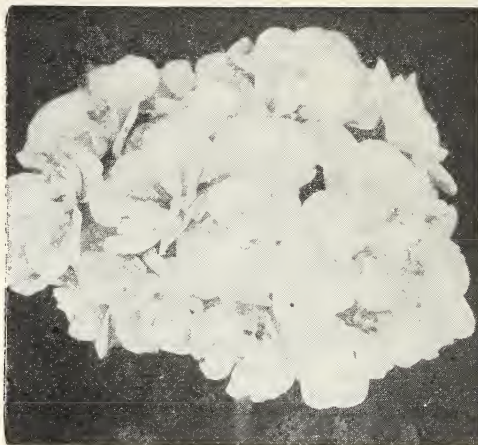
DOUBLE

Fiat—A strong featured, new, semi-double, salmon-pink. Its perfect flower trusses make wonderful pot specimens at Easter and Memorial day, and are extremely free and constant in summer beds. The salmon is deep and velvety, the final pink of satin finish.

uby—Seedling of S. A. Nutt and Pamela. Beautiful semi-double clusters on long stems. Both florets and clusters are much larger than S. A. Nutt. Color dark currant-red, suffused with violet. We consider this the best dark-red we grow and think when better known it will supersede S. A. Nutt.

Alphonse Ricard—Large semi-double flowers, often measuring two inches in diameter, borne in enormous trusses, on long flower stems. Continues in bloom the entire season.

Jean Viaud—Large, semi-double rosy-pink flowers with white eye. Blooms with uninterrupted freedom the entire season, and is of such rapid and vigorous habit of growth that it makes one of the best all-round plants obtainable.



La Favorite Geranium



S. A. Nutt Geranium

Buchner—A Geranium of the large flowering type and one that has proved to be a fine bedder. Flowers purest white; not a trace of coloring at the center. Very free-flowering, always a perfect mass of white.

Red Wing—Deep cardinal red, with a soft velvety sheen unusually attractive; semi-double flower, of good substance; large trusses as free as S. A. Nutt in bloom. Plant is strong growth and makes an ideal pot plant or bedder, as it stands the sun well; has no rival in its color.

American Beauty—Distinct low-branching, short-jointed growth and dark, crimped foliage. Color rich American Beauty shade. Very beautiful; fine bloomer.

Spaulding Pet—This is a profuse bloomer with large bright scarlet flowers, semi-double, and has the remarkable faculty of blooming right through the hottest and driest weather; is also a luxuriant grower. This is a variety that is especially desirable for the South.

SINGLE

Mrs. E. G. Hill—A magnificent variety; enormous trusses of large florets; the center of each petal is a soft light salmon bordered with rosy salmon; habit exceptionally strong and vigorous; attractively zoned; semi-dwarf; stands the sun perfectly. An old favorite bedder and pot variety.

Red Barney—A pleasing color of rich red and a wonderful bloomer.

Improved Poitevine—Rosy-salmon, nicely shaded and tinted from deep orange to pure salmon. An excellent pot variety, being an early bloomer.

Mme. Landry—A distinct salmon-pink with a slight scarlet shading. Large trusses and florets borne on long stems. A vigorous grower and one that stands hot weather well.

Helen Michel—The clearest possible shade of scarlet. Borne on gigantic trusses.

IVY-LEAVED GERANIUM

Caesar Franck—Trusses very large, florets immense and very regular form, quite full; the color is an exquisite shade of rosy-carmine. 15c each.

Roycroft's Surprise—One of the most beautiful Ivies we have. In color it is a charming clear rose of rich pink, which is very attractive. 15c each.

SCENTED-LEAVED VARIETIES

Nutmeg—Dwarf, bright green foliage; nutmeg fragrance. 10c each.

Rose—A skeleton-leaved, strongly rose-scented with finely cut foliage. Often used for flavoring jellies, etc. 15c and 25c each.

Apple—This grand old favorite fills a room with its delicious apple blossom odor. 25c each.

PELARGONIUMS (Easter Greeting)—The earliest of all Pelargoniums with enormous florets and clusters having light green foliage and of dwarf robust growth. It blooms from March until fall. The florets are of a fiery amaranth-red with five regular-shaped spots. The first and only kind to do so all summer. 15c, 25c, 50c and \$1.00 each.

Heliotropes—All fine sorts, fragrant, blue, lavender and white, at 10c each; \$1.00 per dozen. Ready to sell December 1st to May 1st. If wanted by mail, add 15c per dozen.

Hibiscus—Stands our hot, dry summers to perfection. 15c each; \$1.50 per dozen. Large plants, 25c and 50c each. If wanted by mail, add 15c per dozen.

Peachblow—One of the finest plant novelties of recent years. Flowers double, of a rich shade of clear pink, with small, deep crimson center; an entirely new variety.

Grandiflora—Rich, glossy foliage, blooming profusely during the summer, literally covering the plant with scarlet-crimson flowers.

Rubra—Flowers enormous, double, clear red, tinted with violet; an unusually free bloomer. Plant outdoors after frost is over. Ready February 1st to May 1st.



Hibiscus used as an ornamental fence

Hydrangea Otaska—A Japanese variety, producing immense heads of pink flowers. This is the variety so extensively used for Easter decorations. **Plants, 25c, 75c and \$1.00.** On sale November 15th to May 1st. **By mail, 5c extra for small plants; add 10c extra for large plants.**

Ivy, Parlor—A lovely and thrifty climber for the house or window; grows very quickly and makes an abundance of pretty green foliage. **10c each; 3 for 25c.**

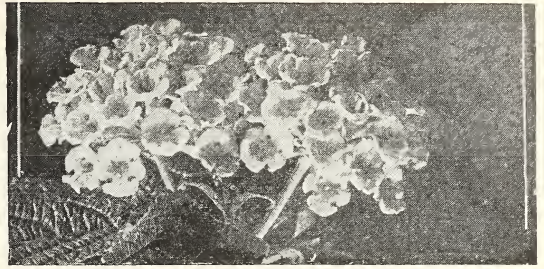
Jasminum—The sweetest flower grown. Be sure to try one of each.

Grand Duke—Large, double, white, imbricated flowers; fragrant. **15c and 25c.** Fine for pots in house.

Cape Jasmine—See page 11.

Night Blooming—Blooms at night; flowers very fragrant. Fine for planting in the yard; rapid grower. **15c each.**

Maid of Orleans—A very attractive new sort, with good-sized, semi-double flowers, blooming profusely all summer; shining pale-green foliage. We predict for it a rapid sale, as it is much easier to handle than other Jasmines, and as a whole, more desirable. **15c and 25c.** Pot plants for sale the year round.



Lantana

Lantana—LANTANAS ARE THE BEDDING PLANTS FOR THE SOUTHWEST

This splendid bedding plant is increasing in popularity because of its splendid blooming habit and remarkable drought-resisting qualities. Plant them April 1st to August 1st. They are in bloom all summer and with a little covering of straw over the roots during the winter they usually come up the following spring. **Price: 10c each; \$1.00 per dozen. By mail, 15c extra per dozen.**

We have the following named varieties:

A. Cook—Dwarf, orange-yellow, changing to bright rose.

Michael Schmidt—Dwarf. Red, orange and yellow; very popular.

PINK BEAUTY. Covered with flowers of silvery rose with center of soft yellow; a beautiful contrast.

Radiation—Medium height. Orange-yellow, changing to brilliant red. A good bloomer.

Violet King—Medium height. Opens yellow and gold, changing to an intense purplish-red.

Jacob Schultz—Tall. Yellowish-orange, turning to an intense red.

Lantanas—Weeping—A grand plant for baskets and vases. May be used to good advantage in connection with other plants, but is more effective when used alone, where its bright colored bloom forms a perfect mound of flowers. A fine plant for winter flowering in the house pots or small hanging baskets. Flowers delicate rosy-lilac, borne freely all over the plant from the base of each leaf stalk. **10c each; 3 for 25c.** Ready November 15th to June 1st.

Oleander—The plants of the South, almost hardy in the northern parts of Texas. Grows to a height of 10 feet; a beautiful pot or tub plant for lawn; blooms nearly all season; very decorative. Colors—red, white, salmon, pink. **Nice plants, 25c each; large plants, 50c and \$1.00 each.**

Otaheite Orange—The best orange for pot culture. Plants dwarf and symmetrical in form. Flowers freely with a delightful orange fragrance. Fruit edible; about half the size of ordinary oranges. A grand plant for winter culture; scarcely ever without some display of blossoms or fruit. **Nice plants 25c; larger plants 50c, 75c and \$1.00 each.** Ready to sell the year round.



Ponderosa Lemon

Lemon, Ponderosa

One of the best selling plants; grows rapidly and forms nice, bushy plants; blooms and bears fruit freely at the same time. **Nice plants 25c; large plants 50c, 75c and \$1.00.** Plants on sale the year round. **By express only; the small size can be shipped by mail.**

Mint Plants—A few plants will supply your requirements for this often needed herb for years to come, as it comes up every year. **Good plants, 10c each; \$1.00 per dozen.**



Otaheite Orange

SPECIAL COLLECTION NO. 1.

20 assorted plants for hanging baskets, porch and window boxes and some suitable for the yard. The collection consists of ferns, hanging and blooming plants and foliage plants. All for **\$1.00, prepaid.**



Mammoth Pansy

diameter. Colors—rose, white and white with crimson center. 10c each; 75c per dozen.

Petunias, Single—The single Petunia is one of the finest bedding plants for massing, mixed borders, or for vases. The brilliancy and variety of its colors, combined with the duration of its blooming period, renders it invaluable for garden decoration.

Rose of Heaven—Rich, rose-pink.

Rosy Morn—Soft rose-pink, white throat.

Above named varieties, 75c per dozen.

Purple, red, crimson, blotched and white varieties, 10c each; \$1.00 per dozen.

Plumbagoes—(*Capiensis*)—A plant worthy of more general cultivation; producing large trusses of delicate azure-blue flowers. Excellent for bedding out in summer or growing in pots for single specimen plants. 15c each; \$1.50 per dozen. If by mail, add 10c per dozen.

Poinsettia—The Christmas plant, unexcelled for pot plant; hardy in the southern states. The plant grows to a height of 3 to 5 feet and makes an immense head of brightest red leaves, which is the flower, and makes it the show flower for Christmas decorations. Flowers will last four to eight weeks. Large plants, 50c; nice plants, 25c. Spring delivery only.

Primrose Obconica—A favorite pot plant for house and conservatory culture on account of its wonderful blooming qualities, flowering nearly all the year through. 50c each. Ready for sale October 15th to March 15th only. If by mail, add 5 cents extra.

Rattlesnake Plant—*Sansaverie Zelanica*—Very hardy; for house culture; very attractive. 25c, 50c and \$1.00 each.

Salvia—(*Salvia Splendens*)—The well-known Scarlet Sage. Another splendid flowering plant, with its plumes of dazzling scarlet flowers. Each 10c; 75c per dozen; 8c per dozen for postage.

Dwarf Ever-Blooming Salvia Zurich—A fine scarlet; very dwarf; an ever-bloomer. 10c each; 75c per dozen. Postage 8c per dozen.

Verbenas—One of our specialties. This list we offer cannot be excelled. No garden is complete without a collection of Verbenas. Red, pink, purple, white. Don't fail to order some Verbenas. 10c each; 75c per dozen. Ready February 1st to May 15th. By mail, add 10c per dozen.

Beauty of Oxford—Extra large, vigorous grower, cerise-pink. A real knockout. 15c each; \$1.50 per dozen. By mail, 10c per dozen extra.

Verbena, Lemon—Or Sweet Verbena—Is a favorite on account of its lemon-scented foliage and lilac-scented flowers. Each, 15c and 25c. Ready to sell December 1st to May 1st. 3c extra for postage.

Vinca—Major *Variegata*—Pleasant and refreshing. This is a beautiful variegated trailing vine admirably adapted for hanging baskets and vases. The leaves are a glossy green, broadly margined a creamy-white, flowers blue. More Vincas are employed in vase and basket work than all other vines combined. 10c each; 3 for 25c; \$1.00 per dozen.

Violets, Texas—The Texas Violet is of a darker purple than the California, not quite as long stems, but by far a better bloomer and withstands the hot, dry summer better than any violet we have ever grown. Large plants, 10c each; 75c per dozen. Ready for sale or planting November 15th to April 15th. If wanted by mail, add 10c per dozen.

Petunias, Giant Double—Are as large as Hollyhocks; as double as double can be, with edges finely fringed; petals fluted and crinkled, intensifying and varying the colors with high lights and dark shadows, bringing out a richness and effect unmatched by crumpled velvet, which the flowers resemble. There is a variety of colors—selfs, blotched, veined, margined, etc.; in short, these double Petunias are unsurpassed by any other strain in the world. Prices: 15c each; \$1.50 per dozen.

Palms

We are making a specialty of Palms and have one of the largest and best stocks of them to be found anywhere.

All Palms in pots 4-inch or over should come by express at purchaser's expense; if wanted by parcel post please add 15 per cent of the cost of plants.

The Kentias are recommended as being the hardiest and best for house culture, as dust and gas do not affect them as much as many other palms. Where height of plant is given it means height from top of pot.

All Palms may be had the year round; nice plants, 50c each; large plants, 18 to 20 inches high, \$1.50 to \$3.00.

Phoenix Canarensis—The most satisfactory Palm for the house, porch or lawn. Grows to be very large. 50c, \$1.00, \$2.50, \$3.50 and \$5.00.

Latania Borbonica—**Fan Palm**—A beautiful Palm, with large, deeply-divided fan-shaped leaves; it is easy of cultivation and should be in every collection.

Kentia Fosteriana—It grows tall, with large heavy foliage.

Phoenix Roebelenii—The most graceful of the Phoenix, and a Palm which has become one of the most popular for room decoration. The plant is of vigorous growth, and its gracefully recurring leaves, with very narrow dark-green pinnac, give it a lightness and airiness not surpassed.



Salvia Splendens

Lang's Lawn Grass Seed



Lang's Lawn Grass Mixture. Feed your lawn VIGORO to keep it healthy and green

Lawn Grass Mixture—*Winter Sowing*—There is no better seed than is put in this mixture for the making of good lawns. It consists of blue grass, red top, Bermuda grass, white clover, English rye and timothy, which assures a quick growth.

Prices: 75c per lb.; 3 lbs. \$2.00; 10 lbs. \$6.00, prepaid.

Perennial English Rye—(*Lolium Perenne*)—A hardy rye grass, grows well on clay soil and withstands drought reasonably well; grows quick and is a good pasture grass. White Clover is sometimes used with this when used for lawn purposes. Price: Lb. 40c; By express, 10 lbs. \$3.00.

Kentucky Blue Grass—(*Poa Pratensis*)—It is the best pasture for the climate and soil, succeeding finely on hill lands and producing the most nourishing food for cattle. Fancy cleaned seed 60c per lb. By express, 10 lbs. \$5.00.

Bermuda Grass—(*Cynodon Dactylon*)—One of the most valuable grasses for pastures and hay in the South, where it will stand indefinitely if plowed and harrowed in the spring once every four or five years. Best grade of new crop seed, thoroughly recleaned. \$1.00 per lb. By express, 10 lbs. \$6.00.

We Grow Vegetable Plants and Field Seeds

We are the largest growers of vegetable plants and field seeds in the South. Over one million Frost-proof Cabbage Plants now ready for early gardens. We can supply your needs in Egg, Pepper, Tomato and Sweet Potato Plants, all grown from highest quality seed. Place your orders early; we will make shipment when you desire.

Potato Slips Ready About April 1st

Every year we grow for our trade about 10,000 Pumpkin Yam Potato Slips. The price varies according to season. March delivery, 10c per dozen; 50c per 100; \$5.00 per 1,000. April delivery, \$4.50 per 1,000.

Tomatoes Ready About March 1st

For early planting try some of our fine and true plants grown from selected seeds. Dwarf, Champion (Tree Tomato), Acme (tall variety), also Beauty and Stone. Prices: 10c per dozen; 50c per 100; \$3.50 per 1,000.

Cabbage Ready About February 1st

Thousands of these plants are grown by us for early planting, such varieties as Early Jersey Wakefield, Early Winningstadt, Early Summer. Prices: 10c per dozen; 50c per 100; \$3.50 per 1,000.

Pepper and Eggplants Ready About March 15th

Place orders early, as they are always short. 20c per dozen; 2 dozen 35c; 75c per 100.

FIELD SEEDS

We handle a complete line of Field Seeds, but since the market on all farm seeds fluctuates, we hesitate to quote any price. We will be glad to quote you on any seed and quantity or variety upon request. Our corn, cotton, sorghums, kafir corn, maize, millet, oats, grasses, cowpeas, stock beets, peanuts, alfalfa, field beans, peas, etc., are all grown by experts and specialists, therefore, you can depend on the quality.

PLANT THE BEST SEED

Your time and money are often wasted by planting the wrong kind of seed. Buy reliable, tested seed.

Vegetable Seeds That Grow

Your orders, no matter how large or how small, will always receive our prompt attention. ALL SEEDS sold in packet, ounce, pound, prepaid by mail, unless it be varieties listed by express at purchaser's expense, or otherwise stated.

ALL SEEDS in lots over one pound, gallon, peck, bushel to go by express or freight at purchaser's expense unless otherwise stated. The price has been reduced to the lowest figure for choice stock.

BEANS—

We have our stock grown on contract by one of the most reliable Bean Seed growers in Michigan, and feel sure they will give the best of satisfaction.

BUSH WAX PODDED

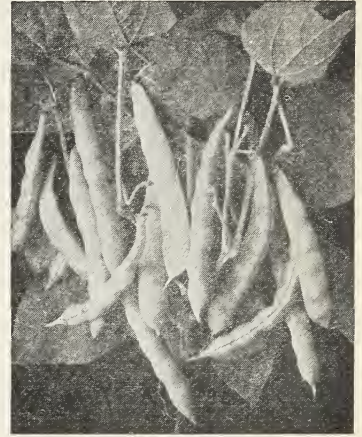
Improved Golden Wax (Rust-Proof)—Very valuable, rust-proof strain of Golden Wax. Pkt. 10c; lb. 30c; 2 lbs. 55c, postpaid.
Dwarf German Black Wax—Very prolific strain of the Black Wax, with long, round pod of attractive, waxy-yellow color. Pkt. 10c; lb. 30c; 2 lbs. 55c, postpaid.
Wardwell's Kidney—Quite extensively grown in Southern Texas for shipping to distant markets. Pkt. 10c; lb. 30c; 2 lbs. 55c, postpaid.

BUSH GREEN PODS

Extra Early Red Valentine—This is a round pod bean, very tender and the earliest of all bush beans, very desirable for the home garden. Pkt. 10c; lb. 30c; 2 lbs. 55c, postpaid.
Giant Stringless—One of our most prolific producing varieties, somewhat later than the Early Valentine, but a more abundant producer. Pkt. 10c; lb. 30c; 2 lbs. 55c, postpaid.
Burpee's Stringless—This is the most popular of our green pod beans and the varieties very much planted by our market gardeners. Pkt. 10c; lb. 30c; 2 lbs. 55c, postpaid.
Tennessee Green Pod—This early intermediate snap bean is very popular in the South. Pkt. 10c; lb. 30c; 2 lbs. 55c, postpaid.
Longfellow—Vigorous in growth, 16 inches tall, bearing abundance of pods 5 to 6 inches long; round, slightly curved, stringless when young, of good quality. Pkt. 10c; lb. 30c; 2 lbs. 55c, postpaid.
Refuge, or Thousand-To-One—Somewhat later than the other green-podded sorts, but very prolific. Pkt. 10c; lb. 30c; 2 lbs. 55c, postpaid.

POLE OR CLIMBING SORTS

The Kentucky Wonder—The greatest of all pole beans, almost a continuous bearer, producing pods 6 to 9 inches long, which are very tender. Pkt. 10c; lb. 30c; 2 lbs. 55c, postpaid.
White Creasback—Mostly planted by our country cousin on account of its wonderful producing qualities. Pkt. 10c; lb. 30c; 2 lbs. 55c, postpaid.
Lazy Wife—A remarkable variety, not only for its great productiveness, but also for its fine quality; the pods are produced in clusters, and almost a handful can be grasped at once. Pkt. 10c; lb. 30c; 2 lbs. 55c, postpaid.



Extra Early Red Valentine

BUSH LIMA BEANS

Henderson Dwarf or Bush Lima—A very desirable variety for the home gardener and a prolific producer. Pkt. 10c; lb. 35c; 2 lbs. 65c, postpaid.
Burpee's Bush Lima—A true bush form, growing 18 to 20 inches high; an immense yielding variety. Pkt. 10c; lb. 35c; 2 lbs. 65c, postpaid.

POLE LIMAS

Small White Lima or Sieva—A very early variety, valuable for the truck growers on account of its wonderful productiveness. Pkt. 10c; lb. 35c; 2 lbs. 65c, postpaid.
King of the Garden—This is the large variety, very productive and will bear until frost if picked often and not allowed to ripen on the vines. Pkt. 10c; lb. 35c; 2 lbs. 65c, postpaid.

BEET SEED—

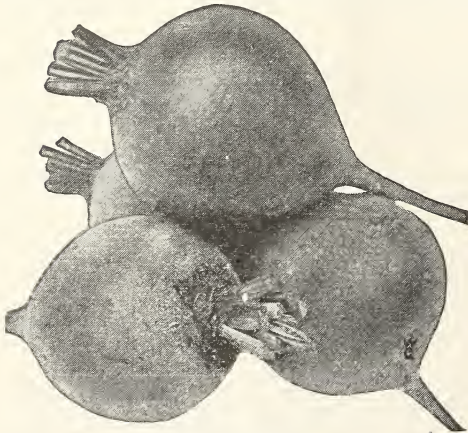
Eclipse—"The Money Maker," as it is called by those who have grown it for early market. Fine turnip shape insures a quick sale. Pkt. 5c; oz. 10c; ¼ lb. 20c; lb. 60c.

Extra Early Egyptian Blood—A standard sort, being from ten to twelve days earlier than the old Blood-Turnip. Pkt. 5c; oz. 10c; ¼ lb. 30c; lb. 75c.

Edmund's Blood Turnip—Select stock. The old standard, the favorite with thousands of gardeners; by many preferred to all others for general use. Cooks sweet, tender and crisp; in every way we recommend this as a valuable sort for market or home gardeners. Pkt. 5c; oz. 10c; ¼ lb. 30c; lb. 75c.

Improved Long Smooth Blood—Roots long and slender, penetrating the soil deeply, but seldom more than two inches in diameter. Pkt. 5c; oz. 10c; ¼ lb. 30c; lb. 75c.

Detroit Dark Red—Very popular sort, used extensively by market gardeners as well as private planters. The beets are very tender, sweet and crisp and remain so for a long time. Pkt. 5c; oz. 10c; ¼ lb. 30c; lb. 75c.



Detroit Dark Red Beets

Swiss Chard—(Sea Kale or Spinach Beet)—This kind of beet is grown exclusive for the numerous fleshy, tender leaves and stalks, which are superior to those of other beets for greens. Pkt. 5c; oz. 10c; ¼ lb. 25c; lb. 75c.

Brussels Sprouts—Are a very delicate vegetable and deserve a more general cultivation than they receive. The plant belongs to the cabbage family, and should be grown and cultivated like cabbage. The "sprouts" which grow around the strong, upright stems of the plant look like miniature cabbages. Very hardy; improved by frost. Pkt. 10c; oz. 15c.



Swiss Chard

CABBAGE—

Henderson's Early Summer—Our strain of this standard early variety has been carefully selected each season and we pride ourselves on being able to offer a strain of Early Summer that cannot be surpassed. Pkt. 10c; oz. 20c; $\frac{1}{4}$ lb. 50c; lb. \$2.00.

Early Dwarf Flat Dutch—A standard sort that seems to increase in popularity each season. The plants are short-stemmed and upright with comparatively few and short leaves, so that they may be planted very close together. Pkt. 10c; oz. 20c; $\frac{1}{4}$ lb. 60c; lb. \$2.00.

Stein's Early Flat Dutch—A distinct strain of quick-growing and early-maturing. Immense growth, weighing 10 to 12 lbs. Pkt. 10c; oz. 25c; $\frac{1}{4}$ lb. \$1.00.

Jersey Wakefield—Carefully selected seed. For over twenty years Jersey Wakefield has held its own with other cabbages and our enormous sales of this variety every season prove to us that it is still one of the most popular sorts ever introduced. Pkt. 10c; oz. 20c; $\frac{1}{4}$ lb. 55c; lb. \$2.00.

Copenhagen Market—The earliest, large, round-headed Cabbage yet introduced. The heads are exceptionally large for so early a variety, very solid and of most excellent quality. Pkt. 10c; oz. 30c; $\frac{1}{4}$ lb. 75c; lb. \$2.50.

Early Drumhead or Short Stem—One of the best second early varieties. Head large, flat, compact, solid and of fine quality. Pkt. 10c; oz. 20c; $\frac{1}{4}$ lb. 65c; lb. \$2.35.

Charleston Wakefield—A very popular variety with market gardeners in the South. It is a week later than Early Jersey Wakefield, but the heads are nearly one-half larger. Does not burst when ripe. Pkt. 10c; oz. 20c; $\frac{1}{4}$ lb. 60c; lb. \$2.00.

Surehead—Burpee's Surehead is a most popular strain of the favorite Flat Dutch type of cabbage. Pkt. 10c; oz. 20c; oz. 30c; $\frac{1}{4}$ lb. 90c; lb. \$3.00, postpaid.

All Seasons—Heads large, solid and of excellent keeping qualities. Fine for shipping purposes. A splendid cabbage for general use. In quality, tenderness and flavor no Drumhead can surpass our selected strain of All Seasons. Pkt. 10c; oz. 30c; $\frac{1}{4}$ lb. 75c; lb. \$2.50.

Succession—The best general crop cabbage in the world. Surest heading late sort. Keeping qualities unequalled. Pkt. 10c; oz. 20c; $\frac{1}{4}$ lb. 60c; lb. \$2.00.

Premium Late Flat Dutch—This is a large, strong-growing variety, requiring a considerable length of season in which to perfect the large, solid flat heads. Pkt. 10c; oz. 20c; $\frac{1}{4}$ lb. 60c; lb. \$2.00.

Red Cabbage—

Mammoth Red Rock—Largest and most solid of the red varieties; very tender. Pkt. 10c; oz. 40c; $\frac{1}{4}$ lb. \$1.25; lb. \$4.00.



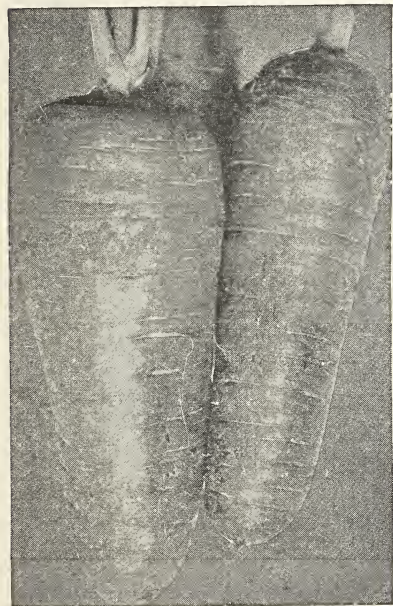
Copenhagen Market Cabbage

Chinese Cabbage—

Pe-Tsai—Improved Chinese Cabbage. The market appearance of this Cabbage in quantity the past two years has created a widespread demand for the seed. It has a mild flavor and may be eaten raw or as a salad, or cooked. Boiled, minced and seasoned with butter, it is especially delectable. Pkt. 10c; oz. 25c; oz. 45c; $\frac{1}{4}$ lb. \$1.50.

Savoy Cabbage—

Perfection Drumhead Savoy—Savoy Cabbage is very much superior to ordinary Cabbage, as it is more tender and of finer flavor. Perfection Drumhead Savoy is an excellent strain, with large, solid heads of fine quality. Pkt. 10c; oz. 40c; $\frac{1}{4}$ lb. \$1.25; lb. \$4.00.



Half-Long Danvers Carrots

CARROTS—

Early Scarlet Horn—Stump root. Is popular for forcing and early outside sowing. Flesh deep orange, small tops. Pkt. 5c; oz. 10c; $\frac{1}{4}$ lb. 20c; lb. 75c.

Oxheart—A desirable variety on soil too hard and stiff for the longer growing sorts. Pkt. 5c; oz. 10c; $\frac{1}{4}$ lb. 20c; lb. 75c.

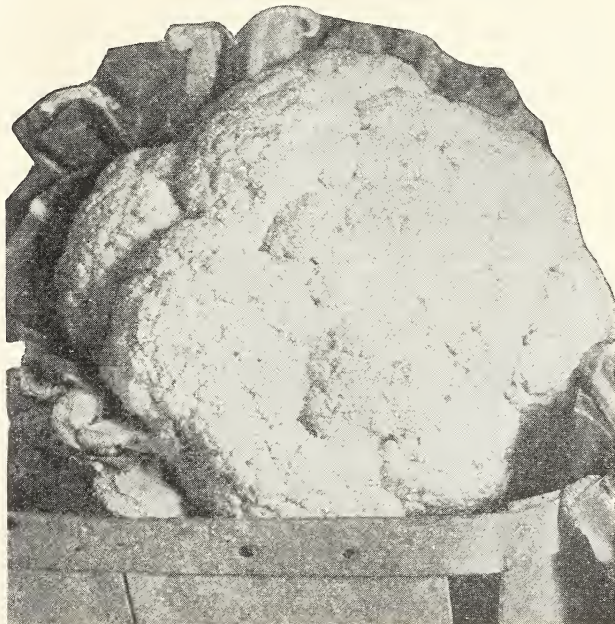
Half-Long Danvers—Improved stock. One of the most productive for field culture. Pkt. 5c; oz. 10c; $\frac{1}{4}$ lb. 20c; lb. 75c.

Long Orange—The best late variety for field culture. Pkt. 5c; oz. 10c; $\frac{1}{4}$ lb. 20c; lb. 75c.

CAULIFLOWER—

Early Snowball Forcing—The market gardeners' favorite. Stands the heat and drought better than most Cauliflowers. Pkt. 25c; oz. \$1.75.

Selected Dwarf Erfurt—Excellent for forcing as well as open ground. The plants are small-leaved and dwarf, producing pure white heads of finest quality. Pkt. 25c; oz. \$2.00.



Select Dwarf Erfurt Cauliflower

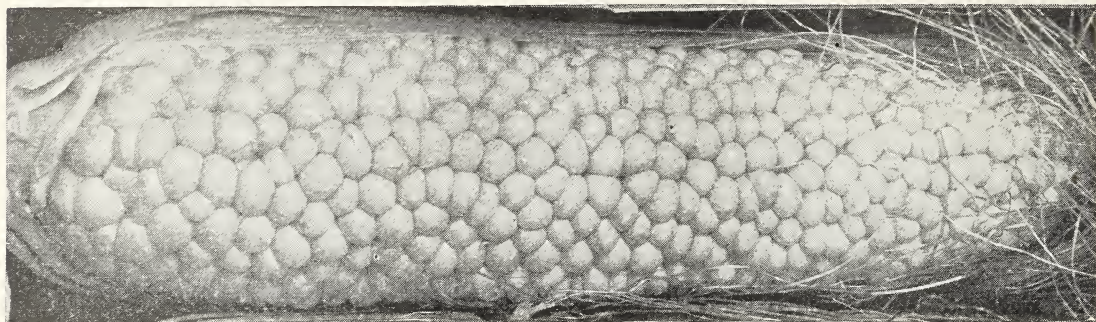
CELERY—

White Plume—It is more largely grown for both private and market use than any other sort. In earliness it surpasses any other Celery, as it can be blanched for the table in September. Pkt. 15c; oz. 30c; $\frac{1}{4}$ lb. 90c.

Golden Self-Blanching—A grand sort on the style of White Plume, except that it is a golden-yellow color. Pkt. 15c; oz. 45c; $\frac{1}{4}$ lb., \$1.40.

COLLARDS—

True Georgia—Pkt. 5c; oz. 10c; $\frac{1}{4}$ lb. 30c; lb. \$1.00.



Country Gentleman Sweet Corn

SWEET CORN— Early Garden Varieties

Golden Bantam—Early Sweet Corn, with yellow kernels. Very sweet and delicious; tender and of excellent quality. One of the best early varieties. Pkt. 10c; lb. 35c; 2 lbs. 65c, postpaid.

Country Gentleman—The most delicious of all Sweet Corns, and also one of the most productive sorts. Pkt. 10c; lb. 25c; 2 lbs. 45c, postpaid.

Stowell's Evergreen—The best late sweet corn in every way, being large-eared, hardy and productive. Pkt. 10c; lb. 20c; 2 lbs. 35c, postpaid.

Adams' Extra Early—The hardiest and earliest variety. It is not a Sweet Corn, but produces ears well filled with tender white grains. Pkt. 10c; lb. 20c; 2 lbs. 35c, postpaid.

Adams' Early Large—One of our leading varieties. Ears are large and handsome. Pkt. 10c; lb. 20c; 2 lbs. 35c, postpaid.

Hickory King, Iowa Silvermine and White Pearl are all good to plant for roasting ears. Pkt. 10c; lb. 20c; 2 lbs. 35c, postpaid. For larger quantities, see Field Corn.

Pop Corn—

Queen's Golden—The largest of all Pop Corn. It is cream in color, but pops perfectly white. Lb. 30c. Not postpaid, 10 lbs. \$1.75.

White Rice—The most popular widely known variety. Lb. 20c; 10 lbs. \$1.75, by express.

Cress—A well known pungent salad. Requires to be sown thickly and covered very slightly, at frequent intervals, to keep up a succession, as it soon runs to seed.

Curled—Very fine for salad; will bear cutting several times. Pkt. 5c; oz. 15c.

CUCUMBERS—

Davis' Perfect—Color a dark glossy green. Length 10 to 12 inches. Pkt. 5c; oz. 20c; ¼ lb. 60c; lb. \$2.00.

Boston Pickle—An abundant bearer; highly recommended for pickles. Pkt. 5c; oz. 15c; ¼ lb. 45c; lb. \$1.50.

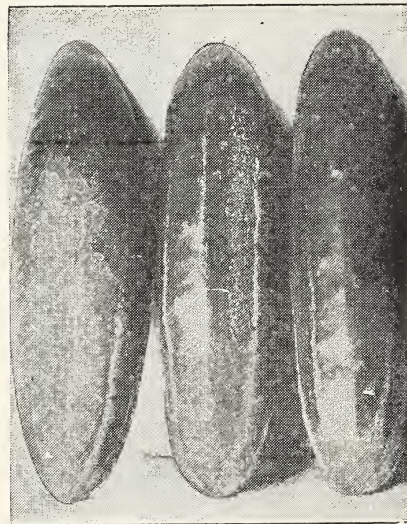
New Klondike—An attractive dark green sort. The fruits average 6 to 7 inches long and 2 inches in diameter. When small, make excellent pickles. Pkt. 5c; oz. 15c; ¼ lb. 45c; lb. \$1.50.

Japanese Climbing Cucumbers—A marvelous climbing variety introduced from Japan. The cucumbers are about ten inches in length, and of a beautiful green color; the flesh is firm and free from the bitter taste found in some varieties. It can be trained on poles, trellises, fences. Pkt. 10c; oz. 20c; ¼ lb. 50c; lb. \$1.75.

Arlington White Spine—The truckers' favorite. Very early; color deep green. Pkt. 5c; oz. 10c; ¼ lb. 50c; lb. \$1.50.

Early Cluster—Fruits small, dark green; borne in clusters. Pkt. 5c; oz. 15c; ¼ lb. 45c; lb. \$1.50.

Improved Long Green—Most widely cultivated sort. Unsurpassed for general use. The cucumbers average 12 inches long. Pkt. 5c; oz. 15c; ¼ lb. 45c; lb. \$1.50.



New Klondike



Black Beauty

Eggplant—

Improved New York Spineless—Fruit of large size and perfect form. Pkt. 10c; oz. 35c; ¼ lb. \$1.25.

Black Beauty—Fruit large, dark purple. Pkt. 10c; oz. 35c; ¼ lb. \$1.25.

Endive—One of the best salads for fall and winter use. For greens and for flavoring soups and stews. Large pkt. 10c.

Horseradish Sets—Will grow in any old corner, anywhere. Can be grated fresh as wanted and far better than when bought from most vegetable stands, as a little goes a long way. 50c per dozen, postpaid; \$3.00 per 100.

HERBS—

Chervil—For flavoring soups, etc. Pkt. 5c; oz. 15c.

Dill—Seeds for flavoring pickles and vinegar. Pkt. 5c; oz. 10c.

Marjoram, Sweet—For seasoning. Pkt. 5c; oz. 25c.

Mustard, White—For seasoning. Oz. 10c; lb. 75c.

Sage—Used as a culinary herb, also for fowls. Pkt. 10c; oz. 25c.

Thyme—Used as a seasoning. Pkt. 5c.

Sweet Basil—Used for flavoring soups and sauces. Pkt. 10c.

Kale or Borecole—

Dwarf Green—A finely curled, spreading, low-growing variety, very hardy, and the favorite sort sown in the South for winter greens. Pkt. 5c; oz. 15c; ¼ lb. 50c; lb. \$1.75.

Kohl-Rabi (Kohlrabi)—

Early White Vienna—Flesh white and tender; a standard sort for market and table use. Pkt. 10c; oz. 20c; $\frac{1}{4}$ lb. 50c.

Early Purple Vienna—Differs from the Early White Vienna in color only. Pkt. 10c; oz. 20c; $\frac{1}{4}$ lb. 50c.

LETTUCE—

Lang's California Mammoth—This is by far the best lettuce we have introduced for the market gardener. Pkt. 5c; oz. 20c; $\frac{1}{4}$ lb. 60c; lb. \$2.00.

Big Boston—One of the most valuable varieties for open ground or forcing in cold frames. Pkt. 5c; oz. 20c; $\frac{1}{4}$ lb. 35c; lb. \$1.25.

Philadelphia Butter—This is one of the finest, the most brittle as well as the crispest Lettuce. Pkt. 5c; oz. 20c; $\frac{1}{4}$ lb. 40c; lb. \$1.40.

Hanson—One of the finest. Heads very large, solid, tender, crisp and of excellent flavor. Stands the sun and drought better than most varieties. Pkt. 5c; oz. 20c; $\frac{1}{4}$ lb. 50c; lb. \$1.75.

Early Curled Simpson—(Seed white). Leaves light-green, slightly frilled, crisp, sweet and tender. Pkt. 5c; oz. 10c; $\frac{1}{4}$ lb. 50c; lb. \$1.75.

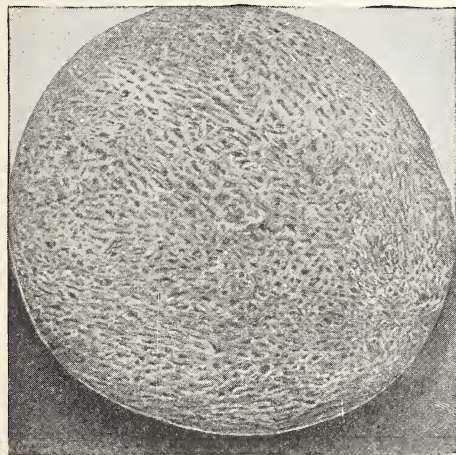


May King Lettuce

May King—A handsome, light-green heading variety of medium size and excellent quality. Pkt. 5c; oz. 20c; $\frac{1}{4}$ lb. 50c; lb. \$1.75.

Prizehead—Forms large, loose heads, which will not stand shipment to distant markets. Pkt. 5c; oz. 20c; $\frac{1}{4}$ lb. 45c; lb. \$1.65.

Brown Dutch—A valuable fall and winter variety, standing almost any amount of cold. Pkt. 5c; oz. 20c; $\frac{1}{4}$ lb. 45c; lb. \$1.65.



Lang's Gold-Lined Netted Rock

MUSKMELONS—

Lang's Gold-Lined Netted Rock—This melon we do not hesitate to recommend to the market gardener and large grower. Size runs from medium to large. They always bring the top price on the market. Pkt. 10c; oz. 15c; $\frac{1}{4}$ lb. 35c; lb. \$1.25.

Rocky Ford—The melon that made Rocky Ford famous. The favorite green-fleshed shipping variety. Pkt. 10c; oz. 15c; $\frac{1}{4}$ lb. 55c; lb. \$2.00.

Baltimore or Acme—The fruits are medium sized, oval or long oval, slightly pointed at stem end, slightly ribbed and are covered when ripe with coarse netting. The flesh is thick, green, well flavored and sweet. Pkt. 5c; oz. 10c; $\frac{1}{4}$ lb. 30c; lb. \$1.25.

Nutmeg Green—A medium-sized globular-formed variety, which is slightly ribbed; the skin is a rich, dark-green. Pkt. 5c; oz. 10c; $\frac{1}{4}$ lb. 30c; lb. \$1.25.

Hackensack or Turk's Cap—Very hardy, are of good size, round, heavily ribbed and netted. The meat is green, thick, firm, and of excellent flavor. Pkt. 5c; oz. 10c; $\frac{1}{4}$ lb. 30c; lb. \$1.25.

Netted Rock—It is about the same size as Rocky Ford, heavily netted, the flesh is green, deep and solid and of very fine flavor. Pkt. 5c; oz. 10c; $\frac{1}{4}$ lb. 30c; lb. \$1.25.

Texas Cannon Ball—Round, medium size, heavily netted, flesh green, very solid, melting and of delicious flavor. Pkt. 5c; oz. 10c; $\frac{1}{4}$ lb. 30c; lb. \$1.25.

WATERMELONS—

Gilbert's Excel—It is a cross between Tom Watson and the Blue Gem. It is a long, bluish-green Watermelon, with dark-green stripes; the flesh is of superb quality and intense red to the rind. Pkt. 10c; oz. 15c; $\frac{1}{4}$ lb. 35c; lb. \$1.00.

Tom Watson—This is one of the best melons. Pkt. 5c; oz. 10c; $\frac{1}{4}$ lb. 25c; lb. 85c.

Halbert Honey—A Texas melon and particularly adapted for our state. Brings always higher prices than any other melon on the market. Pkt. 5c; oz. 10c; $\frac{1}{4}$ lb. 25c; lb. 85c.

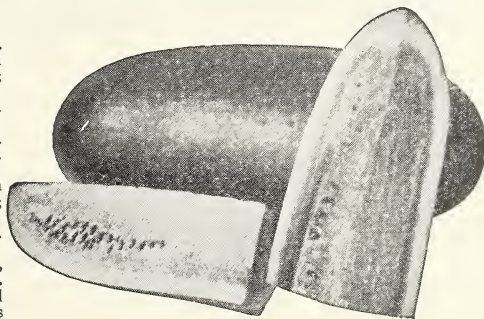
Alabama Sweet—This is a large, oblong melon; color dark green with faint lighter stripes. Fancy selected Southern-grown seed. Pkt. 5c; oz. 10c; $\frac{1}{4}$ lb. 25c; lb. 85c.

Kleckley Sweets—Vines strong and vigorous. Pkt. 5c; oz. 10c; $\frac{1}{4}$ lb. 25c; lb. 85c.

Georgia Rattlesnake—Standard Southern variety; oblong; flesh scarlet, crisp and juicy. A good shipper. Pkt. 5c; oz. 10c; $\frac{1}{4}$ lb. 25c; lb. 85c.

Citron—Grows uniformly round and smooth, striped and marbled with light green. Flesh white and solid, seeds red. This sort is not used for eating in the raw state, but for preserves and pickles, etc. Pkt. 5c; oz. 10c; $\frac{1}{4}$ lb. 25c; lb. 85c.

Honey Dew Melon—The Honey Dew Melon produces a melon with a smooth almost white rind, measuring about six inches in diameter, about seven inches long. The green flesh is thick and has a peculiar sweet flavor, somewhat like a banana; they are at their best when a little over-ripe. Pkt. 10c; oz. 15c; $\frac{1}{4}$ lb. 35c; lb. \$2.00.



Tom Watson Watermelon

MUSTARD—

Southern Giant Curled—The best for greens and the most popular mustard in the South. None better. Pkt. 5c; oz. 10c; $\frac{1}{4}$ lb. 20c; lb. 65c.

Ostrich Plume—Dark green leaves curve outwardly like an ostrich plume. Pkt. 5c; oz. 10c; $\frac{1}{4}$ lb. 20c; lb. 65c.

Large Smooth Leaved—Has a large, fleshy leaf. This variety fills a long-felt want in the South. Pkt. 5c; oz. 10c; $\frac{1}{4}$ lb. 20c; lb. 65c.

White—A small pungent salad. The seed is also used for flavoring pickles, etc. Pkt. 5c; oz. 10c; $\frac{1}{4}$ lb. 25c; lb. 80c.

OKRA—

Tall Green—Long, slender pods, light colored; keep edible a long time and are very tender. Pkt. 5c; oz. 10c; $\frac{1}{4}$ lb. 15c; lb. 75c.

White Velvet Okra—It is distinct in appearance, the pods are perfectly round, smooth, of an attractive white velvety appearance, and of superior flavor and tenderness. Pkt. 5c; oz. 10c; $\frac{1}{4}$ lb. 15c; lb. 75c.

Dwarf Green—Early and productive, smooth pods. Pkt. 5c; oz. 10c; $\frac{1}{4}$ lb. 15c; lb. 75c.



ONIONS—New Crop Seed—

Crystal Wax Bermuda—The most attractive onion in the world.

Pkt. 10c; oz. 75c; $\frac{1}{4}$ lb. \$2.50; lb. \$6.00.

Imported Red Bermuda—Our genuine Red Bermuda is a favorite for home use. Pkt. 10c; oz. 25c; $\frac{1}{4}$ lb. \$1.00; lb. \$3.75.

Imported Yellow Bermuda—Planted extensively by market gardeners in the South for shipping. Pkt. 10c; oz. 25c; $\frac{1}{4}$ lb. \$1.00; lb. \$3.75.

White Pearl, Extra Early—The earliest of all the white varieties. If you are in want of an early white onion, grow Extra Early Pearl. Its immense yield and fine quality will please you. Pkt. 10c; oz. 35c; $\frac{1}{4}$ lb. \$1.00; lb. \$3.50.

The Mammoth Silver King—This variety has been extensively cultivated in all sections for the past five years and has given perfect satisfaction. Pkt. 10c; oz. 35c; $\frac{1}{4}$ lb. \$1.25; lb. \$4.00, postpaid.

Giant Yellow Prizetaker—Extra large size onion, particularly fine flavor. Pkt. 10c; oz. 30c; $\frac{1}{4}$ lb. \$1.00; lb. \$3.75, postpaid.

Yellow Globe Danvers—This strain of Globe Danvers is equal to any usually sold and may be relied upon as a first class cropper in every way. Pkt. 10c; oz. 30c; $\frac{1}{4}$ lb. \$1.00; lb. \$3.75, postpaid.

Large Red Wethersfield—The most widely cultivated red variety, the standard winter onion in many Northern States. A most excellent keeper. Pkt. 10c; oz. 35c; $\frac{1}{4}$ lb. 75c; lb. \$2.75, postpaid.

Australian Brown—Of medium size, wonderfully hard and solid; ripens very early; a fine keeper. Pkt. 10c; oz. 35c; $\frac{1}{4}$ lb. 75c; lb. \$2.50; postpaid.

Onion Sets—Onion sets should be planted out as soon as the ground is in condition to work, early in the spring.

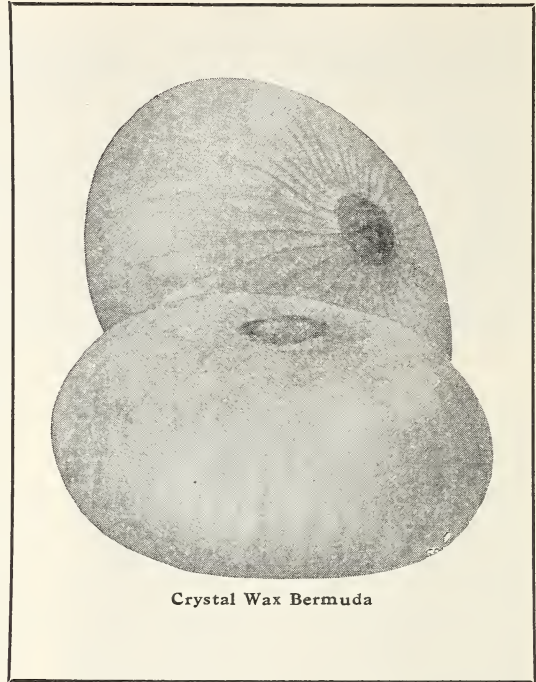
Notice—Prices by the bushel are subject to fluctuation of this market, but the prices quoted on quarts will hold good throughout the season, or as long as our stock allows.

White Bottom—Qt. 35c, postpaid.

Red Bottom—Qt. 35c, postpaid.

Yellow Bottom—Qt. 35c, postpaid.

Write for prices on larger quantities.



Crystal Wax Bermuda



Hollow Crown Parsnip

Parsley—

Champion Moss Curled—A very select stock; the leaves are curled and crimped. Pkt. 5c; oz. 10c; $\frac{1}{4}$ lb. 35c; lb. \$1.00, postpaid.

Plain Parsley—Dark green leaves, good for seasoning. Pkt. 5c; oz. 10c; $\frac{1}{4}$ lb. 35c; lb. \$1.00, postpaid.

Parsnips—

Hollow Crown—A standard sort. Pkt. 5c; oz. 15c; $\frac{1}{4}$ lb. 35c; lb. \$1.25.

PEAS—

First and Best—A vigorous growing, hardy, extra early sort, about 2 $\frac{1}{2}$ feet in height, unbranched, usually bearing from 5 to 7 pods each, filled with smooth peas of the best quality. Pkt. 10c; lb. 30c; 2 lbs. 55c, postpaid.

Alaska—This is a smooth blue pea of unequalled evenness in growth of vine and early maturity of pods, well-filled with medium size, bright green peas of excellent flavor. Pkt. 10c; lb. 30c; 2 lbs. 55c, postpaid.

Laxtonian—This very handsome wrinkled pea is the largest podded of the dwarf varieties on our list. Pkt. 10c; lb. 40c; 2 lbs. 75c, postpaid.

American Wonder—Until the introduction of Nott's Excelsior this was the earliest of all the wrinkled varieties. It is of dwarf habit, only grows about 10 to 12 inches high, but always produces a profusion of well-filled pods of the richest flavor. Our stock is selected with the greatest care. Pkt. 10c; lb. 35c; 2 lbs. 65c, postpaid.

Pride of the Market—Vines of medium height, stiff, with large dark green leaves and bearing at the top, generally in pairs; a good crop of large, pointed, dark green pods. Pkt. 10c; lb. 35c; 2 lbs. 65c, postpaid.

Bliss' Everbearing—Height of vines, two feet; foliage very large, firm and bright green; pods three to four inches long. Pkt. 10c; lb. 35c; 2 lbs. 65c, postpaid.

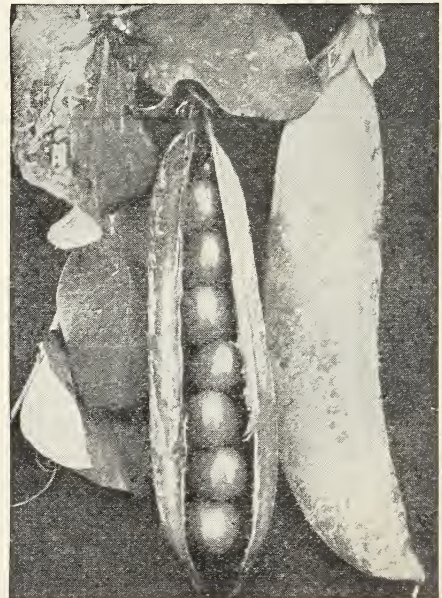
Champion of England—The favorite late variety. Pkt. 10c; lb. 35c; 2 lbs. 65c, postpaid.

Thomas Laxton—A very early wrinkled variety of great merit. The vines are vigorous, of medium height, about three feet. Pkt. 10c; lb. 40c; 2 lbs. 75c, postpaid.

Nott's Excelsior—Grows 15 inches high, and is claimed by the introducer to be the earliest and best Dwarf Wrinkled Pea ever introduced. For the home garden it cannot be too highly recommended. Pkt. 10c; lb. 35c; 2 lbs. 65c, postpaid.

Large White Marrowfat—The vines of this variety are about 5 feet high and of strong growth. Pkt. 10c; lb. 30c; 2 lbs. 55c, postpaid.

New Telephone—Seed green, wrinkled; height about 4 feet. Pkt. 10c; lb. 35c; 2 lbs. 65c, postpaid.



Thomas Laxton Peas

PEPPERS—

Chinese Giant—The largest and most handsome Pepper in the world, twice the size of its nearest rival. Pkt. 10c; oz. 50c; $\frac{1}{4}$ lb. \$2.00, postpaid.

Bell or Bull Nose—Early and of mild flavor. A favorite for pickling. Large, bright red, thick flesh. Pkt. 10c; oz. 50c; $\frac{1}{4}$ lb. \$1.60, postpaid.

Ruby King—One of the standard Peppers, very large and of mild flavor. Bright ruby-red color. Pkt. 10c; oz. 50c; $\frac{1}{4}$ lb. \$1.60, postpaid.

New Pimento—This Pepper is largely grown in California, also in the South, for canning purposes. When ready for table use or shipping, the color is a brilliant green. Pkt. 10c; oz. 50c; $\frac{1}{4}$ lb., \$1.60, postpaid.

Long Red Cayenne—Of dwarf growth, bearing long, pungent pods. Pkt. 10c; oz. 50c; $\frac{1}{4}$ lb. \$1.60, postpaid.

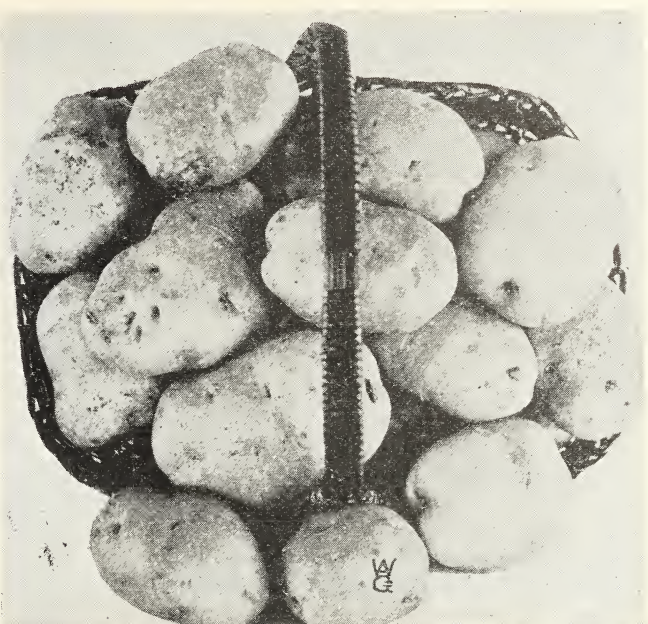
Red Chili—Smaller and later than Cayenne. Extensively used for pepperauce. Pkt. 10c; oz. 50c; $\frac{1}{4}$ lb. \$1.60, postpaid.

POTATOES—

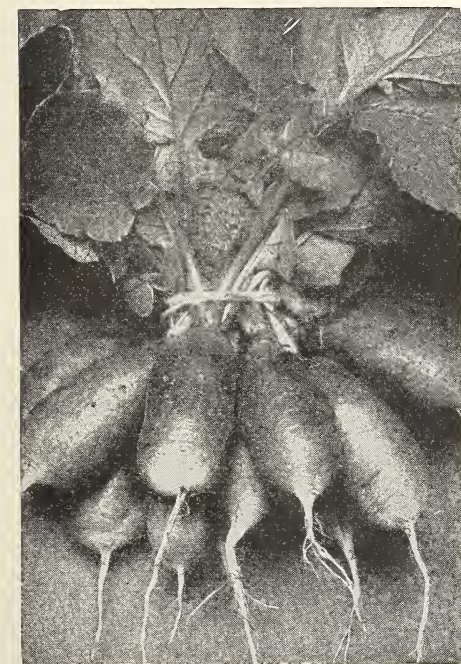
Irish Cobbler Potato—A comparatively new and very fine early variety; extensively grown for market in some localities. This is a very reliable variety and heavy cropper.

Pure Early Rose—The good old favorite which continues in great popularity. The seed we offer is the purest and best that can be put on the market.

Tennessee Triumph—Matures a week in advance of the Early Rose. Color a beautiful light red. WILL QUOTE PRICES ON APPLICATION.



Irish Cobbler Seed Potatoes



French Breakfast Radishes

Rhubarb—

Victoria—The finest market variety, producing large thick, heavy stalks in rich soil. Pkt. 5c; oz. 20c; $\frac{1}{4}$ lb. 50c.

Salsify—

OR VEGETABLE OYSTER

Mammoth Sandwich Island—A large and superior variety. Pkt. 5c; oz. 15c; $\frac{1}{4}$ lb. 45c.

PUMPKINS—

Connecticut Field—A very productive old standard sort that is grown almost exclusively for stock feeding purposes. Pkt. 5c; oz. 10c; $\frac{1}{4}$ lb. 25c; lb. 85c, postpaid.

Improved Green-Striped Cushaw—A crook-necked variety, with green and white striped skin. The flesh is of rich yellow color, solid, fine-grained, very thick and sweet. Pkt. 5c; oz. 15c; $\frac{1}{4}$ lb. 45c; lb. \$1.75.

Large Cheese or Kentucky Field—Very popular and productive. Flesh yellow, thick, tender, nutritious and of excellent quality. Pkt. 5c; oz. 10c; $\frac{1}{4}$ lb. 25c; lb. 85c.

Tennessee Sweet Potato—The best variety for home gardens. They are almost pear-shaped, growing to a large size. Vines are enormously productive. Pkt. 5c; oz. 15c; $\frac{1}{4}$ lb. 40c; lb. \$1.65.

RADISHES—

Early Scarlet Turnip—A round, red, turnip-shaped radish with small tops and of very quick growth. Very desirable for early outdoor planting, as well as forcing. Pkt. 5c; oz. 10c; $\frac{1}{4}$ lb. 25c; lb. 85c.

Early Scarlet Turnip, White Tipped—One of the handsomest of the turnip radishes and a great favorite in many large markets for early planting outdoors. Color very deep scarlet with a distinctly white tip. Pkt. 5c; oz. 10c; $\frac{1}{4}$ lb. 25c; lb. 85c.

French Breakfast—A quick growing, small, olive-shaped radish about 1 $\frac{1}{2}$ inches long by $\frac{3}{8}$ to $\frac{1}{2}$ of an inch in diameter when fully grown. Color beautiful deep scarlet except a little clear white about the tip. Pkt. 5c; oz. 15c; $\frac{1}{4}$ lb. 35c; lb. 85c.

Rose China Winter—One of the best fall radishes; a favorite with market gardeners. Pkt. 5c; oz. 10c; $\frac{1}{4}$ lb. 35c; lb. \$1.25.

Chartier—The color at the top is a bright crimson, changing to a pink at the center and from thence downward it is a pure waxy white. Pkt. 5c; oz. 10c; $\frac{1}{4}$ lb. 35c; lb. \$1.25.

Long Scarlet Short Top—The standard long variety for market and home gardens; root long and growing partly above ground. Pkt. 5c; oz. 10c; $\frac{1}{4}$ lb. 25c; lb. 85c.

Long White Vienna or Lady Finger—This is one of the finest long radishes, beautiful in shape, skin and flesh pure white. Pkt. 5c; oz. 10c; $\frac{1}{4}$ lb. 25c; lb. 85c.

Iceberg—The earliest and finest long white radish. Pkt. 5c; oz. 10c; $\frac{1}{4}$ lb. 25c; lb. 85c.

Round Black Spanish—Skin black, flesh white; roots round; well flavored. Keeps well through the winter. Pkt. 5c; oz. 15c; $\frac{1}{4}$ lb. 40c; lb. \$1.25.

Long Black Spanish—One of the latest and hardest long radishes, especially adapted for winter use. Roots rather long, thick, almost black, with white flesh. Pkt. 5c; oz. 15c; $\frac{1}{4}$ lb. 40c; lb. \$1.25.

Rhubarb Roots

You ought to have a few roots of this delicious vegetable in your garden. It is not only a luscious dish—but very healthful and good for one to eat. Contrary to the opinion of some, it is not at all hard to grow. Price, 25 cents each; 12 for \$2.50.

Rutabaga—

American Yellow Purple Top—The most satisfactory variety of Rutabaga to grow for either family use or stock feeding. Is very hardy and productive. Flesh yellow, solid and sweet. Pkt. 5c; oz. 10c; $\frac{1}{4}$ lb. 25c; lb. 75c.

Cow Horn—Long white, resembling a cow horn; good for winter. Pkt. 5c; oz. 10c; $\frac{1}{4}$ lb. 35c; lb. \$1.00.

SPINACH—

Curled Bloomsdale or Long Standing Spinach—Produces nearly twice the weight of crop as other varieties and has further merit in the fact that it is the hardiest of all varieties of Spinach. Pkt. 5c; oz. 10c; $\frac{1}{4}$ lb. 15c; lb. 50c.

SQUASH—

Early White Scalloped Bush—A beautiful white Squash of light cream color, large size, flat. Elegant for home use. Pkt. 5c; oz. 10c; $\frac{1}{4}$ lb. 30c; lb. \$1.25.

Yellow Summer Crookneck—A small crookneck sort. Skin bright-yellow; very early and productive. Pkt. 5c; oz. 10c; $\frac{1}{4}$ lb. 35c; lb. \$1.50.

Hubbard (Warty)—Our own strain of Hubbard Squash, is considered to be the finest of any grown. The fruit grown from our seed matures earlier, keeps better and commands a higher price than that grown from other seed. The vines are of strong, running growth and bear a good number of large warty specimens. The shell is hard, strong and dark green in color, thickly covered with rough, warty growth. The flesh is a bright orange-yellow, fine-grained, very dry, sweet and rich-flavored. Pkt. 10c; oz. 15c; $\frac{1}{4}$ lb., 55c; lb. \$1.75.

Boston Marrow—A fall and winter variety of medium large size, oval shape, bright orange color, with a shading of light cream color. Flesh rich yellow, fine-grained, rich, delicious flavor. Pkt. 5c; oz. 10c; $\frac{1}{4}$ lb. 40c; lb. \$1.35.

TOMATOES—

Beauty—Of a very glowing crimson in color and with a slight tinge of purple. It has more solid flesh and fewer seeds than average kinds and is less inclined to rot. Pkt. 5c; oz. 30c; $\frac{1}{4}$ lb., \$1.25; lb. \$4.00.

Acme—The old standard variety. The color is a crimson-tinted, with a light pinkish shade. Our seed is selected. Pkt. 5c; oz. 25c; $\frac{1}{4}$ lb., \$1.00; lb. \$3.50.



Spark's Earliana

TURNIP—

Extra Early Purple Top Milan—Fully a week earlier than any variety. Pkt. 5c; oz. 15c; $\frac{1}{4}$ lb., 60c; lb. \$2.00.

Purple Top Flat Strap Leaf—The standard variety. Pure white, except the purple outer skin above the ground. Pkt. 5c; oz. 10c; $\frac{1}{4}$ lb. 20c; lb. 65c.

Purple Top White Globe—This famous purple top turnip is very desirable for home gardens, and a favorite with market gardeners on account of its shape, size and beauty. Flesh pure white, with a red or purple top. Pkt. 5c; oz. 10c; $\frac{1}{4}$ lb. 20c; lb. 65c.

White Globe—The king of all mammoth white Turnips. A very good autumn variety. Pkt. 5c; oz. 10c; $\frac{1}{4}$ lb. 20c; lb. 65c.

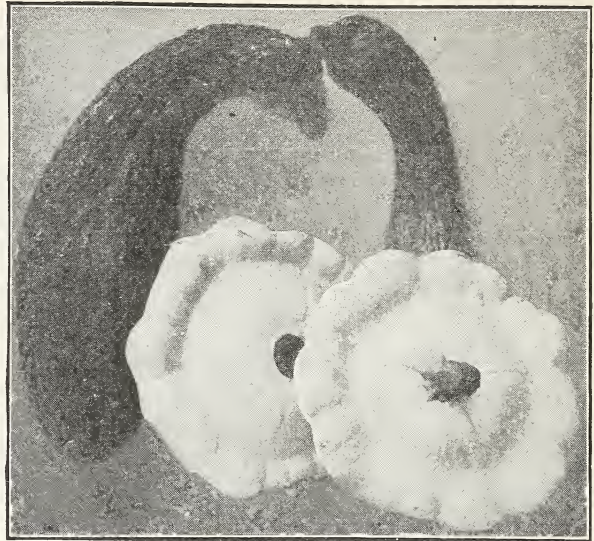
White Egg—A very quick-growing fall Turnip. Should be sown in August. Oval or egg-shaped, flesh very firm and fine-grained; flavor mild and sweet. A fine cooking variety. Pkt. 5c; oz. 10c; $\frac{1}{4}$ lb. 35c; lb. \$1.25.

Early White Flat Dutch—A popular, well-known early sort; the best variety for spring sowing. Pkt. 5c; oz. 10c; $\frac{1}{4}$ lb. 25c; lb. 90c.

Amber Globe—Yellow flesh, firm, fine-grained; very sweet; skin yellow, with green top; keeps well; very popular in the South. Pkt. 5c; oz. 10c; $\frac{1}{4}$ lb. 25c; lb. 75c.

Golden Ball—Rapid grower, globe-shaped and of a deep yellow color. Pkt. 5c; oz. 10c; $\frac{1}{4}$ lb. 20c; lb. 65c.

Seven Top—Grown only for the tops, which are used for greens or salad in the South. Pkt. 5c; oz. 10c; $\frac{1}{4}$ lb. 20c; lb. 65c.



Yellow Summer Crookneck and White Scalloped Bush Squash

Dwarf Champion—The best early tomato grown; entirely distinct in habit of growth and foliage; vines are dwarf and compact, grow stiff and upright, with thick, short jointed stems. Pkt. 5c; oz. 30c; $\frac{1}{4}$ lb. \$1.75; lb. \$6.00.

Livingston's Dwarf Stone—In habit of vine it resembles Dwarf Champion, but is of stronger growth and more erect. Pkt. 5c; oz. 40c; $\frac{1}{4}$ lb., \$1.25; lb. \$4.00.

Ponderosa—This is one of the largest varieties. The fruits are of a purplish pink color; very solid and ripen early, continuing to do so until frost. Pkt. 10c; oz. 45c; $\frac{1}{4}$ lb., \$1.40; lb. \$5.00.

Spark's Earliana—This Tomato has become very popular with many growers of Tomatoes for early market. Pkt. 5c; oz. 35c; $\frac{1}{4}$ lb., 85c; lb. \$3.25.

June Pink Tomato—The earliest pink tomato. Pkt. 5c; oz. 35c; $\frac{1}{4}$ lb. \$1.75; lb. \$6.00.

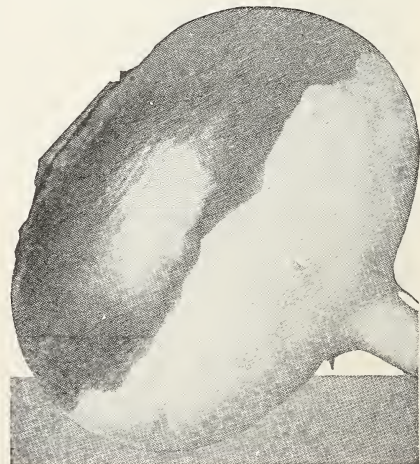
New Stone—Fruit large and deep, bright scarlet; smooth, ripening evenly to the stem without a crack; very solid and firm-fleshed; of the finest quality. Pkt. 5c; oz. 25c; $\frac{1}{4}$ lb. 75c; lb. \$2.50.

McGee—This variety was introduced three years ago, and gave excellent success. The most prolific bearer. The color is a bright crimson, very solid and of good flavor, producing few seeds and small cavities. A variety that can be depended on both for market and home use. Pkt. 10c; oz. 45c; $\frac{1}{4}$ lb., \$1.75; lb. \$6.00.

Perfection—Preferred by many to any other sort, and is extensively grown by gardeners who raise fruit for the canning factories. It is invariably smooth and of a handsome deep blood-red; flesh is thick; almost coreless. Pkt. 5c; oz. 30c; $\frac{1}{4}$ lb. 85c; lb. \$3.00.

Golden Queen—Fruits large and smooth; color a beautiful golden-yellow, sometimes with a slight blush of red, as smooth and well shaped as the best of the red varieties and of superior flavor. Pkt. 10c; oz. 50c; $\frac{1}{4}$ lb. \$1.75; lb. \$6.00.

Yellow Pear—A pear-shaped variety, used for preserving. Vines are very heavy yielders. Pkt. 5c; oz. 35c; $\frac{1}{4}$ lb., \$1.50.



Purple Top Flat Strap Leaf

Fresh, New and Reliable Flower Seed

Notice to Flower Seed Buyers: We make a specialty of all the leading seeds. If you want to beautify your place at a small cost, try our seeds. Note the results. All packet seeds are prepaid.

Ageratum—This plant is almost constantly in bloom throughout the summer.

Mexicanum—Lavender-blue. 2 feet. Pkt. 10c.

Tom Thumb—Mixed, rarely exceeds 6 inches in height. Pkt. 10c.

Alyssum, Sweet—The delicate, honey-like fragrance of its white flowers is much prized in bouquets and baskets.

Little Gem—The best variety for bedding. Very dwarf and compact. Pkt. 10c.

Benthami—Trails; white and fragrant. Pkt. 10c.



Ageratum

Amaranthus—Brilliant foliage annuals, bearing curious racemes of flowers.

Caudatus (Love Lies Bleeding)—Blood red; drooping. Pkt. 10c.

Tricolor (Joseph's Coat)—Leaves red, yellow and green. Pkt. 10c.

Aquilegia—(Columbine)—Beautiful, curiously formed and variously colored flowers.

Double—All colors mixed. A beautiful yard plant and good bloom; all colors imaginable. Pkt. 10c.

Asters—One of the prettiest mid-summer flowering plants. All colors mixed. Pkt. 10c.

Delicata—Light pink. Pkt. 10c.

Peony—All colors mixed. Pkt. 10c.

Empress of China—Dark blue. Pkt. 10c.

Fire King—Deep crimson. Pkt. 10c.

Snowball—Pure white. Pkt. 10c.

Balsam—(Lady Slipper)—An old favorite garden flower.

Rose-Flowering—Mixed. Pkt. 10c.

Double Dwarf Mixed—Pkt. 10c.

Burning Bush or Summer Cypress—

(*Koehia Trichophila*)—This we consider one of the most ornamental border or hedge plants that has ever been brought out and it is sure to attract attention. Pretty plant with fine, feathery foliage; light-green, turning to blood-red in autumn. Pkt. 10c.

Calendula—Large double flowers, blooming all summer.

Meteor—Creamy center, edged with orange. Pkt. 10c.

Candytuft—Universally known and cultivated and considered indispensable for cutting.

White Rocket—Pkt. 10c.

Dwarf Mixed—Pkt. 10c.

Canna—Cannas are famous for their luxuriant growth and immense Gladiolus-like flowers of most brilliant colors.

Large-Flowering French Hybrid—Early-flowering and remarkable for large size and beauty of flower and foliage. This elegant collection contains everything that is best in Cannas. Large pkt. 10c.

Madame Crozy (Dwarf)—Flowers beautiful scarlet with gold border around each petal; foliage green. Pkt. 10c.



Sweet Alyssum

Carnations—Carnations are general favorites.

Marguerite—Variety of colors and delicious perfume will insure its popularity in all gardens where cut flowers are in demand. Pkt. 15c.

Finest German—Mixed colors; saved from extra fine, double, named flowers. Pkt. 25c.

Double Vienna—Dwarf; early; large flowers; all colors and beautiful markings. Pkt. 15c.

Castor Oil Beans—Blood-red stalks and clusters of red fruit. Eight feet. Pkt. 5c.

Celosia—(Coxcomb)—

Glasgow Prize—The best dwarf crimson sort, with handsome dark foliage. Combs very large and solid. Pkt. 10c.

Plumosa (Plumed or Ostrich Feather Cockscomb)—Blooming in late summer and autumn. Producing large, showy plumes resembling ostrich feathers. Pkt. 10c.



Celosia

Centaurea—(Or Bachelor's Button)—Thanks to the praiseworthy fashion of using only long-stemmed flowers for bouquets, the different species of *Centaurea* have become general favorites in all countries.

Bachelor's Button (*Centaurea Cyanus*)—Called Blue-Bottle, Ragged Soldier, etc. Mixed colors. Pkt. 10c.

Imperialis (*Giant Sweet Sultan*)—2½ feet. Finest of all Sweet Sultans for cut-flower purposes. Pkt. 10c.

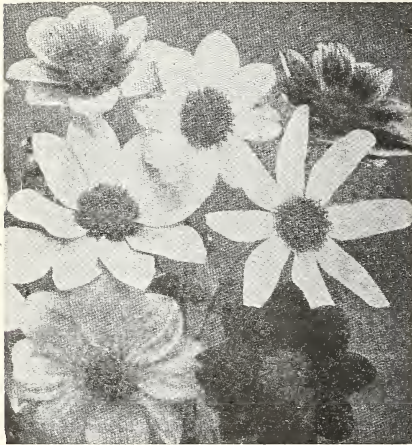
Candidissima—**Ornamental-Leaved *Centaurea* (Dusty Miller)**—For bedding, hanging baskets and pots and for edging of beds where white basket foliage is desired. Silvery white, finely cut leaves. One foot. Pkt. 10c.

Chinese Wallflower—(*Celosia Childsii*)—This novelty has proved a great success everywhere. The most odd and novel flower of most any garden. Pkt. 10c.

Chrysanthemums—Mixed annual. These varieties are summer-flowering sorts and are greatly prized for their brilliant colors and profuse blooming qualities. Pkt. 10c.

Coreopsis—(*Grandiflora*)—Large, showy, bright yellow flowers. Easily grown from seed, flowering the first year if sown early. Pkt. 10c.

Cosmos—The flowers are borne profusely in loose clusters, and present a charming appearance. Pkt. 10c.
Klondyke Cosmos (Orange)—Pkt. 15c.



Single Dahlias

Feverfew—**Double White**—(*Matricaria*)—For cutting and pot culture, as well as for beds and borders. Pkt. 10c.

Four O'Clock—(*Marvel of Peru*)—Blooming the first season from seed. The flowers, which are produced in clusters, open in the afternoon. Pkt. 10c.

Gypsophila—(*Baby's Breath*)—Delicate, free-flowering plants covered with star-shaped flowers. Pkt. 10c.

Heliotrope—Everyone loves the delightful fragrance and beauty of the Heliotrope. It can be raised from seed as easily as Verbenas. Fine mixed. Pkt. 10c.

Hollyhocks—Few plants combine as many good qualities or lend themselves as readily to varied uses as Hollyhocks. Extra choice double mixed. Pkt. 10c.

Ice Plants—The most suitable plant grown for hanging baskets; leaves of dark green and glossy color hanging down one to two feet. Pkt. 10c.

Lantana—There is no plant which makes more show, and which gives more blooms and satisfaction in some corner of the yard, side of the house or any sunny, hot place, where nothing else will grow. Best mixed. Pkt. 10c.

Larkspur—

Dwarf German Rocket—Finest double mixed. Pkt. 10c; oz. \$1.25.

Double-Stock Flowering—Purple, rose flesh, blue, white, or mixed. A tall, branching variety, with beautiful long spikes of flowers. Pkt. 10c; oz. \$1.50.



Dianthus—Pinks

Dahlia—

Double, Finest Mixed—Large flowering. Pkt. 10c.

Single Mixed—Large, showy single flowers. Pkt. 10c.

Daisy—

Double Perennial Mixed (Bellis)—Will bloom the first season if sown early. Pink, white and red. Pkt. 10c.

Marguerite or Paris—One of the best known and most popular plants, both for house and yard. Pkt. 10c.

Shasta Daisies—A great improvement upon the old-fashioned Daisy, being about 2 or 3 inches in diameter. Very fine. Pkt. 25c.

Dianthus or Pinks—Double annual varieties. A magnificent genus, embracing some of the most popular flowers in cultivation.

Heddewigi (Japan Pink)—Colors vary from the richest velvety crimson to the most delicate rose. Double mixed. Pkt. 10c.

Imperialis (Double Imperial Pink)—Double variegated. Mixed colors. Pkt. 10c.

Double China—Beautiful full flowers. Pkt. 10c.

Digitalis—(*Foxglove*)—Gloxinia-shaped flowers. A lovely type. All colors mixed. Pkt. 10c.

Everlasting Flowers—Mixed—A good variety; all the useful and favorite sorts. Pkt. 10c.
Globe Amaranth or Bachelor's Buttons, Mixed—Two feet high, producing small, globe-shaped, double flowers in bright colors. Pkt. 10c.

Blue Forget-Me-Not—(*Myosotis Alpestris*)—An old favorite. It flourishes best in a moist, shady situation. Pkt. 10c.

Geraniums—All the leading fine varieties are combined in this mixture. Pkt. 25c.



Double Hollyhocks

Stim-U-Plant Tablets

Concentrated fertilizer makes gorgeous flowers—See page 47

Marigold—

Large African—Tall, double; orange, brown and yellow mixed. Pkt. 10c.

Dwarf French—Fine color. Mixed. Pkt. 10c.

Mignonette—The fine old variety with small spikes of delightfully scented flowers. Pkt. 5c.

Nasturtiums—**Dwarf**—Free-flowering and very desirable for bedding, vases and pot plants. These come in all shades and colors assorted. Pkt. 10c; oz. 20c; ¼ lb. 50c; lb. \$2.00.

Tall—Choice mixture of the finest varieties; 6 to 10 feet. Pkt. 10c; oz. 15c; ¼ lb. 40c; lb. \$1.75.

Pansies—We secure our Pansy seed from the best American, French and European growers, and offer as fine a quality as can be grown.

King Rufus—Fine bright red. Pkt. 10c.

President Wilson—Large size; beautiful blue shade; gradually deepening to a purple color. Pkt. 10c.

Snow Queen—Handsome pure white flowers. Pkt. 10c.

Faust—Rich, deep black. Pkt. 10c.

King of Yellows—Clear yellow flowers. Pkt. 10c.

Finest Mixed—Different shades and colors. Pkt. 15c.

English Show, Mixed—All the richest and most delicate colors. Pkt. 20c.

Cassier's Mixed—Blossoms are of enormous size and are most beautifully blotched, marked and striped; an inconceivable variety of colors. Pkt. 25c.

Petunias—We now have superb show varieties, fringed and ruffled and doubled, mottled, striped and self-colored.

SINGLE

Single, Inimitable—Striped and blotched. Very effective. Pkt. 10c; oz. \$1.25.

Large-Flowered, Single Fringed—A choice mixture from superb strains. Pkt. 25c.

Rose—Fine pink. Pkt. 10c; oz. \$1.25.

Good Mixed—Pkt. 10c; oz. \$1.00.

DOUBLE

Large-Flowered, Double Fringed—All the best colors. Pkt. 30c.

Giants of California—This is the largest strain of Petunias ever sent out. The large, beautiful, fluffy blossoms are handsomely crimped, fringed and ruffled and come in white rose, velvety crimson-black, etc. Pkt. 25c.



Lang's Phlox Drummondii

Phlox—For a splendid mass of colors and a constant display this is not excelled by any other annual.

Drummondii—Its color ranges from purest white to blood-red or crimson. Finest mixed, all colors. Pkt. 10c; oz. \$1.00.

Drummond Grandiflora—These are a decided improvement on the old class, with larger flowers, a better range of colors and more compact growth. Pkt. 15c; oz. \$1.25.



Lang's Shirley Poppies

Poppies—Very Attractive Plants for Beds, Edgings or Masses.

Carnation-Flowered (Double Annual Sorts)—Splendid double fringed flowers. Mixed colors. Pkt. 10c.

Peony-Flowered—Large, showy, double globular flowers; well adapted for shrubbery, etc. Mixed colors. Pkt. 10c.

Shirley—The range of colors is so varied that scarcely two flowers are alike; many are delicately edged and striped. Pkt. 10c.

Iceland (Nudicaule)—Hardy perennial sort. Yellow, white or orange-scarlet flowers. Pkt. 10c.

Tulip-Flowered Scarlet—Large, bright scarlet flowers. The two outer petals of the flower form a tulip cup. Strikingly beautiful. Pkt. 10c.

American Flag—Large, showy bright flowers. Pkt. 10c.

California Poppy—Profuse-flowering, foliage fine-cut; in bloom from June until frost. Flowers rich orange. Pkt. 10c.

Portulaca—A dazzling display of beauty; multi-colored.

Double Mixed—All colors. Pkt. 10c.

Single Mixed—All colors. Pkt. 10c.

Pyrethrum—

Aureum (Golden Feather)—Bright yellow foliage. Pkt. 10c.

Roseum (Persian Insect Powder Plant)—Flowers a bright rose Pkt. 10c.

Scarlet Sage or Salvia—Beautiful scarlet flowers. Best summer flower. Pkt. 10c.

Snapdragon—One of the most showy and useful yard plants. Pkt. 10c.

Stocks, Ten-Weeks—

Large-Flowered Dwarf—Fine mixed. Pkt. 10c.

Large Flowered Branching—Mixed. Pkt. 10c.

Cut and Come Again—Mixed. Pkt. 10c.

Sunflower—Remarkable for the stately growth, size and brilliancy.

New Red Sunflower—The long, slender stems, the graceful poise of the flowers, with their varied coloring, make them very effective and desirable. Pkt. 10c.
Mammoth Russian Sunflower—This variety is largely cultivated for the seed. Pkt. 10c; price (prepaid), 35c per lb; not prepaid, 10 lbs. \$2.25.

Sweet Peas—Plant Sweet Pea seed from November 1st to February 28th.

Plant a row or few rows of Sweet Peas, one of the easiest, finest and sweetest flowers grown. Try a trial package and you will come again.

A Select List of Sweet Peas.

Snowflake—Large, pure white, improved white.
Amethyst—Royal purple.
Blanche Ferry—Pink and white.
Canary Bird—Large, cream.
Fordhook Rose—Improved rose and carmine.
Illumination—Salmon-cerise.
King Edward—Deep maroon.
Asta Ohn—Lavender.
Fiery Cross—Bright red.
Mrs. Chas. Zvonenek—Orchid.
Selma Swensen—Soft pink.
Enchantress—Pure rose-pink.

Pkt. 25c; oz. 50c; ¼ lb. \$1.25; 1b. \$3.50.

Eckford's New Mixed—This strain, although not embracing the latest novelties, contains a beautiful assortment of the famous Eckford Sweet Peas. Pkt. 10c; oz. 15c; ¼ lb. 35c; 1b. \$1.25.

Gold Medal Mixture—One of the most satisfactory ways of growing Sweet Peas is in a mixed row. Contains all bright varieties in proper proportions, mixed from many standard varieties. Pkt. 15c; oz. 20c; ¼ lb. 50c; 1b. \$2.00.

California Giant Mixed—The enormous size of the flowers and freedom with which they are produced recommend this mixture to all. Pkt. 25c; oz. 35c; ¼ lb. 75c; 1b. \$2.50.



Lang's Select Sweet Peas

Sweet William—A beautiful free-flowering, bright-looking annual. Flowers star-shaped and come in all colors of the rainbow. Mixed colors, Pkt. 10c. Single, Pkt. 10c. Double, Pkt. 10c.

Verbena—The Most Popular Flower for the Yard.

Scarlet.

Blue—Purple and blue.

Mixed—Finest colors.

Pink—Deep pink.

White—Pure white.

Above varieties, each, pkt. 10c.

Vinca—(Periwinkle)—Among our most satisfactory bedding plants; they are very ornamental and bloom freely. In the fall they can be potted for the house, and kept in blooms through the winter.

Rosea—Fine rose color. Pkt. 10c.

Rosea Alba—White, rosy eye. Pkt. 10c.

All colors—Mixed. Pkt. 10c; oz. \$1.25.

Lang's Vine Seeds for Quick Results

Balsam Apple—Very vigorous climbing vines, with ornamental foliage; fruit golden-yellow, and when ripe opens, showing the seeds, and also its brilliant carmine interior; fine for trellises, rockwork, stumps, etc. Pkt. 10c; oz. 50c.

Balloon Vine—A rapid-growing plant; succeeds best in light soil and warm situation; flowers white. Half-hardy annual; 5 to 15 feet. Pkt. 5c.

Cardinal Climber—The finest new annual climber introduced in many years. Bescangled with clusters of fiery scarlet, tubular, spear-shaped flowers, measuring 1¼ inches across. Pkt. 10c.

Cypress Vine—One of the most popular vines, with very delicate fern-like foliage, and masses of beautiful, small star-shaped flowers. Mixed white and crimson. Pkt. 10c; oz. 35c.

Red—A beautiful shade of red. Pkt. 10c.

White—A beautiful white. Pkt. 10c.

Gourds, Climbing—Ornamental—Rapid-growing, interesting plants with ornamental foliage and singular-shaped fruit.

Dipper—Useful for many household purposes. When grown on the ground, produce different shaped gourds than on the trellis. Pkt. 10c.

Dishcloth or Luffa—Sponge-like, porous lining is dried and used in the bath or for dishcloth. Pkt. 10c.

Hyacinth or Jack Bean—A rapid-growing plant, flowering freely in clusters; used for covering arbors, trellises, etc. Mixed. Pkt. 10c; oz. 15c.

Moon Vines (Moonflower)—One of the most showy of the annual climbers. At night and during dull days the plants are covered with large, pure white, fragrant flowers, 5 to 6 inches in diameter. Pkt. 10c.

Morning Glory—Tender annuals of rapid growth, with beautiful and varied flowers. For covering old walls, trellises, arbors, stumps of trees, they are invaluable; 15 to 20 feet. Pkt. 10c.

Grand "Imperial Japanese" Morning

Glory—Grand climbers of strong and robust growth, attaining a height of from 30 to 50 feet. Some are of deep rich, velvety tones, others daintily tinted and shaded, crimson, bronze and garnet-maroon; from the daintiest blue to the ultra-marine, indigo and blackish-purple; from snow-white to cream and silver-gray. Some are striped, starred and spotted, others have magnificent edges and throat. They are of the earliest culture. Sow early in a warm, sunny position in good rich soil, and give plenty of water in dry summer. Mixed colors. Pkt. 10c.

Scarlet Runner Beans—A rapid-growing annual climber, bearing sprays of brilliant scarlet pea-shaped blossoms. Used either as a snap or shell bean for eating as well as being desirable for ornamental purposes. Pkt. 10c.



Ornamental Gourds

This Zinnia is a Prize Winner. Try It



Zinnias, Dahlia Flowered-

These may be had separate colors or mixed. There are NONE BETTER to be had anywhere.

We offer all varieties as follows: Good pkt. 50c; large size pkt. \$1.00, postpaid.

Exquisite—Light rose, center deep rose.

Old Rose—Old rose shade.

Golden State—Yellow, changing to orange.

Crimson Monarch—Largest and best of the red shades.

Meteor—Rich glowing deep dark red.

Dream—Fine deep lavender, changing to purple.

Polar Bear—Best large, pure white.

Buttercup—Immense deep creamy-yellow.

Canary Bird—Delicate shade of primrose.

Special Mixture—A well-blended mixture containing all of the above novelties.

As its name indicates, the Dahlia Flowering Zinnia resembles the Dahlia; flowers often measuring 6 inches, very hardy, adapted to our climate.

Zinnias, Giant Double—A special strain of this grand old favorite. Under favorable conditions they remain in bloom from early summer to late autumn. All varieties as follows: Per pkt. 10c, 25c, and 50c.

Mammoth Double Orange

Mammoth Double Primrose

Mammoth Double Red

Mammoth Double Scarlet—Very bright.

Mammoth Double Golden Yellow

Mammoth Double Mixed—All colors.

Mammoth Double Pink

Mammoth Double Purple

Mammoth Double White

Elegans, Double—This, we consider, the best type for general use, forming bushy compact plants not over two feet high, and bearing perfect double flowers. Mixed. Pkt. 10c; 25c; large pkt. 50c.

Insecticides, Fungicides, Sprays

All Spray Materials Shipped by Express. Collect.

There are many spray materials that we carry in stock but are unable to list in our catalog. If in need of anything in this line, write us.

Destruoxol—This combination spray, containing Nicotine Sulphate and Cyanide, seems to be what we have been after for some time, making it possible through the fumes given off by the Cyanide to reach insect life on the under side of foliage. Our tests have shown it effective when used at proper temperatures and conditions against such common garden pests as aphids, thrip, lice, red spider, leaf roller hoppers, mildew and mealy bug. It is most effective under temperatures of 70 degrees and above, the warmer the weather the better, as the fuming action is greater under higher temperature. Our tests of this product would indicate there is little chance of burning or checking growth even though used at double strength. Use 1 large teaspoonful of Destruoxol to 1 gallon of water.

1 oz. makes 5 gallons of spray.....	\$.40
¼ pt. makes 25 gallons of spray.....	.90
½ pt. makes 50 gallons of spray.....	1.40
1 pt. makes 100 gallons of spray.....	2.00
1 qt. makes 200 gallons of spray.....	3.75

Must be sent via express.

Black Leaf 40—A 40 per cent Nicotine solution for the control of plant lice and aphids on roses and other garden plants. Must be applied in vapor form with a spray pump. Black Leaf 40 will kill all aphids or plant lice that are covered with the spray material, but a new supply of aphids may be carried to your plants the following day by the Argentine Ant. To control aphids it is necessary also to control Argentine Ant. A one-ounce bottle of Black Leaf 40 will make 6 gallons of spray. Full directions on the package. 1 oz. bottle, 35c; ½ lb. tin, \$1.25; 2-lb. tin, \$3.50; 10-lb. tin, \$13.50. Sent by express or freight only.

Acme Garden Guard—So far as we know, Garden Guard is the only garden insecticide on the market containing Bordeaux Mixture. It is a convenient, practical and economical all-around garden insecticide, ready for use as it comes in the package; in a sifter can, easily applied, and very effective in combating the majority of insect pests that prey upon your garden. Applied early in the morning or late in the evening when the dew is on, it will control many chewing insects on vegetables, shrubs and flowers. The Bordeaux Mixture contained therein serves as a fungicide and will assist in preventing Mildew and other fungus difficulties. Used extensively by market gardeners. 1-lb. package, 35c; 5-lb. package, 90c; 100-lb. drum, \$15.75; 200 lbs., \$31.00. Cannot be mailed.

Acme 2-Way Spray—This very effective and approved formula, containing 14 per cent Arsenate of Lead and 83 per cent Bordeaux Mixture, enables you to kill two birds with one stone. It will control all leaf-eating or chewing insects and at the same time the Bordeaux Mixture will control and prevent many of the fungus diseases that the average amateur gardener does not know are present. Acme 2-Way Spray is a powder to be mixed with water when used as a spray material, or it may be used as a dust. Bordeaux Mixture stimulates plant growth and it is, therefore, an important addition to the 2-Way Spray. ½-lb. carton, 25c; 1-lb. carton, 45c; 4-lb. paper bag, \$1.25. Cannot be mailed.

Acme All-Round Spray—(A Powder). To combat chewing insects, sucking insects and fungus diseases. A fungicide and insecticide. Full directions with each package. ¼ lb. 50c.

Devoe Insecticides

Bordeaux Mixture—To control scale and blight and to prevent rot, mildew, blight, leaf-curl, scab and other fungus diseases on fruits and plants. 1-lb. package, 50c.

Fish Oil Soap—Used as a spray for mealy bugs, lice, scales on plants and palms. Also in connection with Black Leaf 40, Nicofume, and other insecticides to destroy sucking insects. By mail, 1 lb. package 40c.

Cyanogas A-Dust—For rats, mice, moles, ants, flies, fleas, sparrows, snakes, groundhogs, chinch bugs, bedbugs, wasps, melon aphids, grape-leaf hopper, gophers, etc.

For the control of Wireworm plant a bait crop of beans, corn or peas before the garden is planted, covering the bait crop to a depth of about 3 inches, in rows about 36 inches apart. Within one week the Wireworms will be attracted to the bait crop and at this time apply Cyanogas by means of a garden seeder or by similar method, directly into the bait rows and about one inch below where the bait was planted. In the small garden, where no seeder is available, open a narrow trench deeper than the bait level, close to and on each side of the bait row, and apply Cyanogas at the rate of one pound to each 100 feet of row. Cover immediately with the earth dug from the trench and leave in for three to four days, after which time seeds or plants may be planted without injury to them. Remember that Cyanogas is injurious to growing plants and it must not be used except when there are no plants growing.

For field operations, where the bait rows are about three feet apart, it requires about 90 pounds of Cyanogas per acre. For further information ask for bulletin on Wireworm Control. 1 lb. 75c; 5 lb. package \$2.75. F. O. B. Dallas. Cannot be mailed.

Cyanogas G-Fumigant—Used extensively for greenhouses, mills, elevators and enclosed space fumigation. Absolutely the best and cheapest greenhouse fumigant to kill aphids, thrips, mealy bugs, white flies, scale. Cyanogas is easy to use, leaves no disagreeable odor, will not discolor blooms and has a stimulating effect on plant growth. 1 lb. 75c; 5 lb. package \$2.75. F. O. B. Dallas. Cannot be mailed.

Dry Lime-Sulphur—1-lb. can. \$.50

Arsenate of Lead—A splendid and effective insecticide suitable for use on tender-foliated plants to control all chewing insects. ½-lb. cans, 40c; 1-lb. cans, 75c.

Sure Noxem—For use on cabbage, tomato plants, cucumber vines and other vegetables and shrubs. Leaf-eating insects, cutworm and mealy bugs. 35c, in sifter can.

Cyanogas Duster (For Rat Work)—is a hand duster. Each, \$1.75.

Write for Free Chart and Spraying Guide, Save the Crops from Ravenous Insects



Sprayers for All Purposes

Brown's Auto Spray No. 9



A screw lock 4-gallon compressed air sprayer that will perform satisfactorily under all conditions. Over half a million of these sprayers are in the hands of satisfied users. Simple, strong and efficient.

Tank of heavy best quality sheet brass, or strong copper-bearing galvanized sheet steel. Air pump one piece, seamless brass with all-metal check valve. A feature exclusive to Brown's sprayers. Every sprayer is equipped with 22-inch brass extension, with angle fitting for spraying tall vines and under side of leaves.

Recommended for spraying small trees, field crops, home and truck gardens, vines, chicken houses, etc.
No. 9-D. 4-gallon galvanized tank, with extension. Price \$9.75

Brown's Auto Spray No. 50



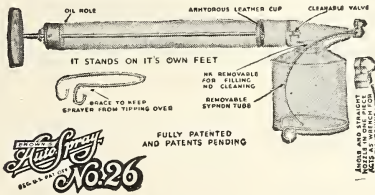
No. 50 is a very powerful little sprayer of the same type, materials and construction No. 9 except the capacity, which is 2 1/2 gallons. It is particularly recommended where weight is a factor and is ideal for women or where the heavier machines cannot be easily managed.

This little sprayer is one of the most popular numbers we sell and thousands of them are in use in home gardens, greenhouses, poultry yards, etc. It will spray any liquid that the larger machines will handle and is recommended for small trees, field crops, home and truck gardens and chicken houses. Made in heavy brass or strong copper bearing galvanized sheet steel. Each sprayer equipped with 18-inch brass angle extension.

No. 50-D. 2 1/2-gallon galvanized tank, with brass extension. Price \$6.75

Brown's Auto Spray No. 26

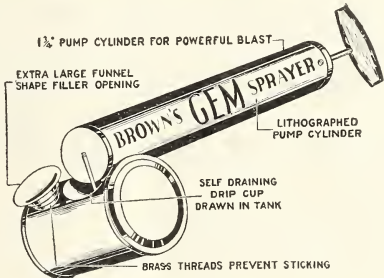
It Sprays Continuously



The Auto-Spray No. 26 will handle agricultural insecticides, disinfectants and all household insecticides. Convenient for house and garden. Sprays continuously and is the strongest and smoothest-working continuous sprayer on the market

No. 26-A. All tin, one quart, continuous, Price \$1.25
No. 26-B. Tin pump, brass tank, one qt. continuous, Price 1.50

Brown's Gem Sprayer



A strong, well made, heavy tin, 1/2-pint, single action atomizer with drip cup. Price 35c.

Brown's Whirlwind Sprayer

Same type and construction as Gem, with one quart capacity tank. Price 50c.

Stim-U-Plant

A Modern, Efficient and Scientific Method of Fertilizing Growing Plants



Stim-U-Plant is a plant food in tablet form valuable for both house plants and garden plants, especially the former as it is easy to apply, and very effective. Simply insert the tablets in soil near the plants or dissolve four tablets in a gallon of water and apply as liquid fertilizer. Trial size, 20c; small size, 35c; 100 tablets, 75c; postpaid.

Bird Cages and Supplies

Plain Enamel Bird Cages

No. 1.....	\$2.25
No. 2.....	2.50
No. 3.....	2.75
No. 4.....	3.00

Round Brass Cages

No. 75.....	\$4.00
No. 76.....	5.00
No. 77.....	6.00

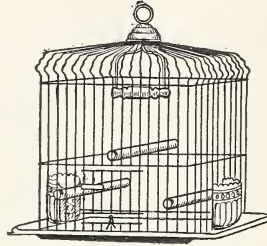
Cage Cups

No. 1904—Flint glass.....	20c each or 2 for 35c
No. 1907—Opal.....	20c each or 2 for 35c

Bird Cage Stands

Brass or colors, \$2.50 and upward to.....	\$15.00
Wrought Iron, \$5.00 upward to.....	17.50

Bird cage stands are forwarded express collect; you can feel perfectly free to send us the amount of money you wish to put into a cage and stand, and leave the selection to us. Or when in Dallas, call around and make a selection.



Cage Hook

10-inch Brass or Nickel.....	\$.35
12-inch Brass or Nickel.....	.50

Bird Food and Remedies

Postage Extra on All Bird Supplies

Canary Breeding and Train Book.....	\$.35
Encyclopedia of Canary.....	.50
Cod Liver Oil Nesting Food (Spratt's).....	.25
Song Restorer.....	.25
Mite Powder and Blower.....	.25
Bird Manna.....	.15
Lang's Nestling.....	.25
Lang's Song Food.....	.25
Cuttle Bone.....	5c; large 10c
Philadelphia Gravel.....	.25

Bird Bitters.....	.25
Bird Tonic, for cold, diarrhea, song restorer.....	.30
Orange Color Food.....	.25
Bird Magic, makes birds sing.....	.30
Song and Moulting Food, specially prepared food for apparently healthy canaries that are moulting or have ceased singing; restores song, per package.....	.30
Sing-Song, a bird biscuit. 2 for 35c, each.....	.20
Bird Eye Water.....	.25
Salve, for scaly legs.....	.25
Salve for bald spots on canaries.....	.25

Miscellaneous Items

Bird Nests, each.....	\$.15
Nesting Hair, per package.....	.15
Parrot Food, per package.....	.50
Parrot Crackers.....	.25
Mocking Bird Food, per package.....	.50
Fish Food, Wafer, per package.....	.15
Fish Food, Natural, per package.....	.15
Fish Food, Ant Eggs, per package.....	.25
Fish Food, Shrimp, per package.....	.25
Turtle Food, per package.....	.35

Live Birds

Our birds are all strong and active. Every singer we sell has been tested by us and known to be a singer. We can not send out on trial or exchange birds. State the amount you wish to pay and leave the selection to us. The value of a bird is not in the plumage. All birds are graded as to singing qualities and range of notes.

Hartz Mountain Canaries.....	\$10.00
St. Andreasburg Rollers, \$10.00 to.....	15.00
All Imported and Guaranteed Parakeets or Love Birds, green or yellow, per pair.....	10.00

Wrought Iron Ferneries

With Copper Bowls that will Last a Lifetime of Ordinary Use
Very Special at \$1.95, \$2.95, \$3.95 and upwards to \$17.50.

Clayton's Cat Remedies

Mange Remedy.....	\$.60	Vermifuge Liquid.....	\$.60
Distemperine.....	.60	Canker Lotion Tablets.....	.60
Distemperine Tablets.....	.60	Eye Lotion Tablets.....	.60
Tonic Catnip and Condition Tablets.....	.60	Fit Tablets.....	.60
Blood Purifier and Cooling Tablets.....	.60	Cough Remedy.....	.60
Digestive Tablets.....	.60	Diarrhea Tablets.....	.60
Laxative Tablets.....	.60	Month Wash.....	.60
Worm Tablets.....	.60	Wash and Disinfectant.....	.25
Tape Worm Expeller Tablets.....	.60	Cat Soap.....	.25

Clayton's Dog Remedies

Mange Remedy.....	\$.60
Skin Lotion.....	.60
Hair Tonic.....	.60
Distemperine Liquid.....	.60
Condition Pills with Pepsin.....	.60
Blood Purifying and Cooling Tablets.....	.60
Digestive Tablets.....	.60
Laxative Pills.....	.60
Worm Pills.....	.60
Tape Worm Expeller.....	.60
Vermifuge Soft Capsules.....	.60
Vermifuge.....	.60
Canker Lotion.....	.60
Distemperine Tablets.....	.60
Eye Lotion.....	.60
Fit Remedy.....	.60
Cough Remedy.....	.60
Sulphur Tablets.....	.60
Puppy Tonic.....	.60
Rheumatic Tablets.....	.60
Diarrhea Remedy.....	.60
Chorea Tablets.....	.60
Ceoline Wash and Disinfectant.....	.35
Shampoo.....	.25
Killflea Soap.....	.25
Killflea Powder.....	.25
Cream Soap.....	.35
Ceoline Soap.....	.25



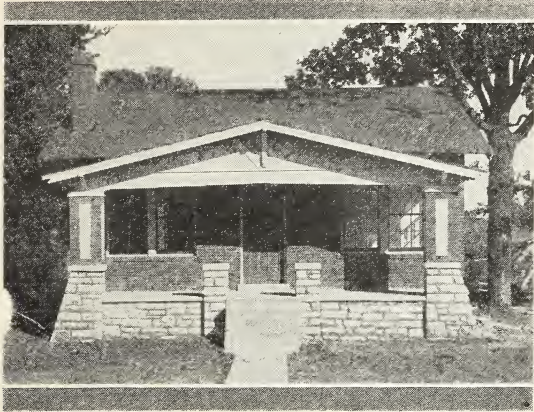
Don't let your pet or faithful animals suffer. Have these remedies handy and keep your pet stock healthy.

Spratt's Lines

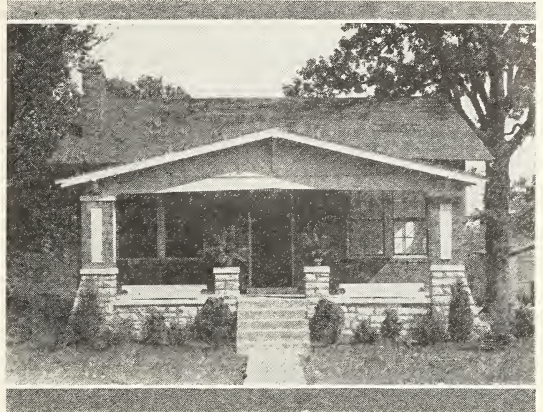
Spratt's Dog Biscuits, well balanced food.....	\$.50
Spratt's Puppy Biscuits, per package.....	.50
Spratt's Ovals, per package.....	.50
Spratt's Fibo for small breeds, medium package.....	.50

(Postage Extra on All Dog and Cat Remedies and Supplies)

Landscaping the Home Grounds



Before Planting



After Planting

Use VIGORO for Velvety Lawns, Beautiful Flower Beds, Shrubs, and Delicious Vegetables

THE home beautiful can only be so if some ornamental plantings are made about the house! The mansion, the large estates, country homes and clubs all spend considerable money in beautifying their exteriors. The simple cottage or small home can be made a home beautiful or can be so planted that you delight in calling it a home. On page 9 you will find drawings suitable for city lots—these have been prepared and arranged by our landscape architect and provide correct plantings and layouts which are adaptable in part, to your home. On pages 7 to 12 we list some especially suitable evergreens. The most splendid of the flowering shrubs are listed on pages 13 and 14. Roses are listed on pages 17 to 20 and if you are planning on a rose garden extraordinary, take advantage of our front cover Rose Collection.



VIGORO

Is Easy to Apply

SIMPLY Sow it by hand like grass seed or apply it with a kitchen colander. For large areas a plant food distributor will save time and make a more even distribution.



for better flowers!

"My garden has never been so beautiful as this year after I applied Vigoro," writes Mrs. W. H. Bateman, 1936 West 102nd Street, Chicago.

"At a recent competition my roses, poppies and pinks, were awarded first prizes."

Clean, dustless, weedless, and odorless! Vigoro is the ideal plant food for lawns, flowers, gardens, shrubbery and trees.

Ask your dealer about this new scientific plant food so easily applied—the most effective and economical you can buy.

VIGORO

Specially prepared plant food

A Swift & Company product

Adds Value to Your Home

Time and money spent in improving the beauty of your home not only adds to the personal satisfaction of having a beautiful home but is, from a strictly business standpoint, a good investment.

No matter how attractive the design or how large the cost of constructing the house, if it has barren surroundings it is only a house. Around this same house picture a velvety green lawn, leafy shrubs that cover up the foundation and corners, full foliaged trees properly placed, and beds of colorful flowers arranged to harmonize with the landscape—how much more is this HOME worth now?

The desire for a home surrounded with beauty is human. It is not difficult to have beautiful surroundings. Nature willingly co-operates in beautifying the home but we must also do our part in preparing the soil, planting the seed, setting out the plants and providing the right kind and amount of plant food to nourish the plants.

To those desiring to improve the beauty of their home surroundings VIGORO will prove a wonderful aid.

How Much Vigoro to Use

Complete directions for applying Vigoro for all plants are contained in every bag. Vigoro should be used at the rate of four pounds per 100 square feet (10 ft. x 10 ft.), in the spring and fall. Use one-half this amount for summer feeding. Using this as a basis, the amount of Vigoro needed for large areas such as parks, large estates and cemeteries can be easily calculated.

Prices of Vigoro—

1-lb. bag.....	\$.15
5-lb. bag.....	.50
25-lb. bag.....	1.75
50-lb. bag.....	3.00
100-lb. bag.....	5.00

On the 1 and 5-pound packages add extra for postage if wanted by mail. Larger quantities by express or freight. F. O. B., Dallas, Texas.

Cut Flowers Department

Lang's

Flowers for
Graduation
Parties
Balls
Sick Rooms
and Gifts
Cannot be
Surpassed



Bouquets for the Bride and Her Attendants

Various Bouquets for a Bridal Party

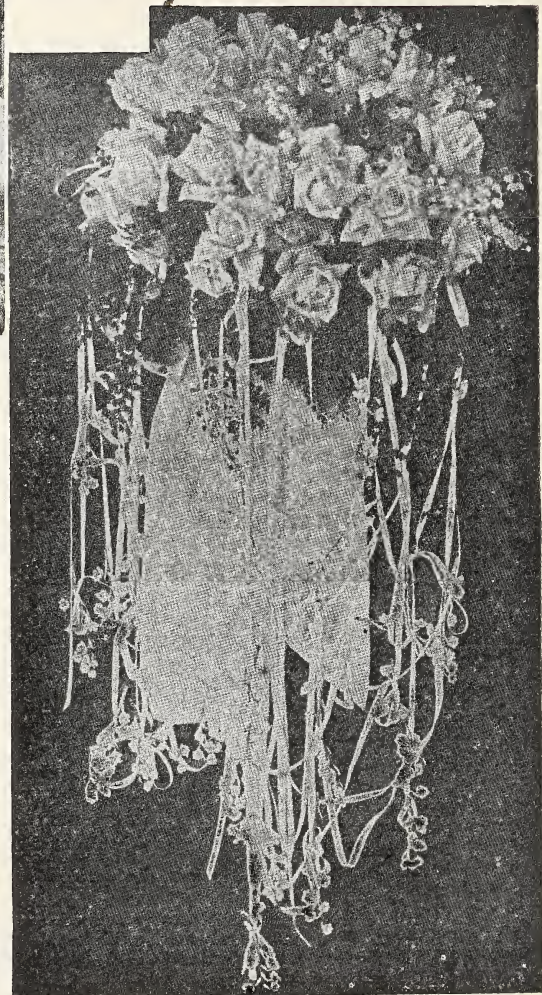
No. 1—Shower Bouquet of Roses and Lilies of the Valley for the bride, consisting of 2½ dozen Bride's Roses, 50 Lilies of the Valley and 15 yards of small shower ribbon, with 3 yards fancy chiffon, total cost, \$17.50.
Same with less Valley and shower, \$12.50. Roses and ribbon only, no shower, \$6.50. All Lilies of the Valley Shower, \$15.00. Lilies of the Valley and Orchids Shower, \$17.50 to \$25.00.

No. 2—Maid of Honor Bouquet: Bride's or Bridesmaid Roses and 3 yards chiffon ribbon. Cost \$6.00. Same can be made of Easter Lilies, Carnations and other flowers in season. The other two illustrations were made for the Bridesmaids, of Sweet Peas in Shower style at a cost of \$6.00 each.
Same can be made of Carnations, white or pink Roses, in shower style, from \$7.50 to \$10.00 each, or without shower and tied with nice chiffon, from \$4.50 to \$7.50.

Say It With Flowers!

FOR ALL OCCASIONS

No present or gift is more acceptable than flowers. Special boxes of flowers in season \$2.50, \$3.50, \$5.00 and up.



PRICE \$12.50.

ROSES!
The Queens of the
Garden

**THIS
COLLECTION**

In No. 2 Grade for only
\$6.00. Try it.

All Strong Plants



Lang's

Collection of
Beautiful ^{Ever-}Blooming
Tea Roses

All
Two-
year-
old,
75c
Each
✻

1. K. A. Victoria
2. Pink Radiance
3. Sunburst
4. Gruss an Teplitz
5. Ophelia
6. Los Angeles
7. Butterfly
8. Luxemburg
9. Francis Scott Key
10. Lady Hillingdon
11. Red Radiance
12. White Killarney
13. Pink Killarney
14. Columbia

The 14
Roses for **\$9.00**

For description see pages 17-18-19-20

LANG'S ROSES COVER THE SOUTH WEST

Easy to Grow—Beautiful Colors—Last a Long Time



FORSYTHIA (Golden Bell)

A beautiful yellow-flowering shrub. Blooms before the foliage comes out. 50c and 75c each.



LONICERA (Bush Honeysuckle)

A handsome, quick-growing shrub. Blooms very early. Strong plants, 50c and 75c each.

THESE SHRUBS PLANTED AMONG SOME EVERGREENS WILL ADD MUCH TO COTTAGE OR MANSION



HYDRANGEA (Bush Shape)

This shrub is much admired when in bloom. Strong plants are \$1.00 each.



DEUTZIA

A shrub that should be in every pretty yard. 50c and 75c each.